

Canon



Clinical Brochure

KALARE

Savings with Every Exposure

Experience a system that delivers the cost-saving advantages of two systems in one. Combining Canon Medical Systems' radiography and fluoroscopy technology into a single R&F space, Kalare™ provides steadfast performance that is customizable to fit your clinical and budgetary needs. Complete with Canon Medical Systems' DoseRite™ technology, the Kalare offers dose management tools designed to help clinicians minimize X-ray exposure while maintaining high image quality and enhancing patient and operator safety and support.

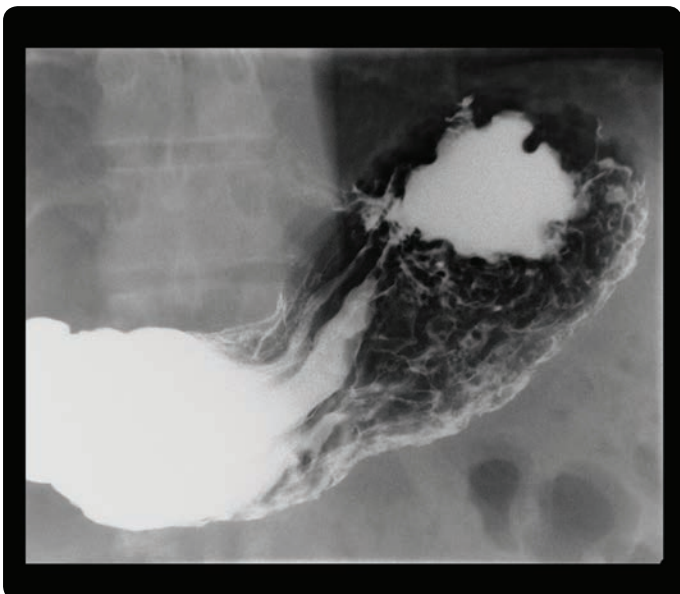




Upper Gastrointestinal Imaging

Canon Medical Systems' advanced Kalare R&F system provides routine dose saving capabilities when performing upper gastrointestinal (UGI) procedures. Lower unnecessary patient exposure with grid pulse fluoro by reducing X-ray exposure that doesn't contribute to the diagnostic image.

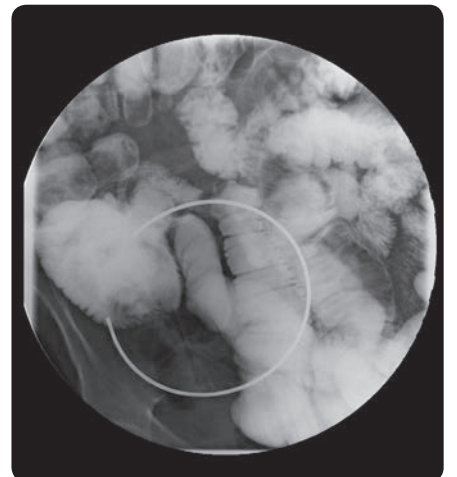
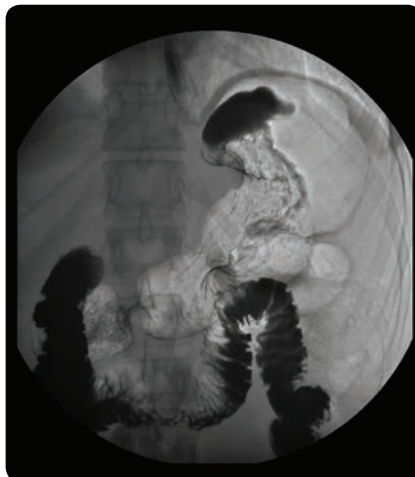
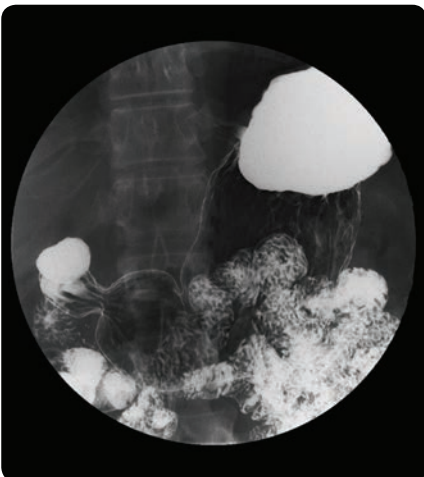
Upper Gastrointestinal Imaging



Esophagram



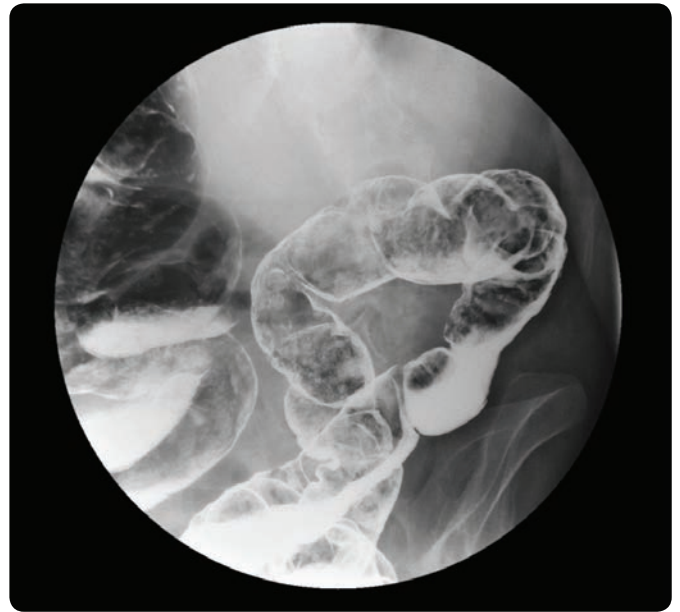
Small Bowel Procedure



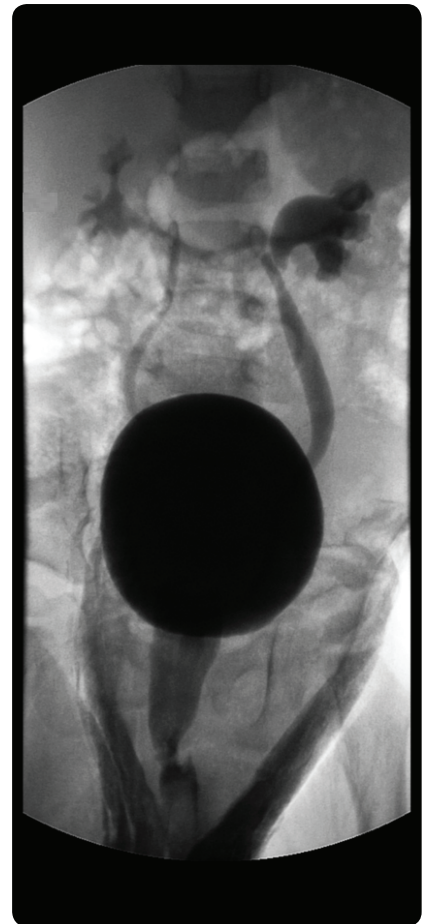
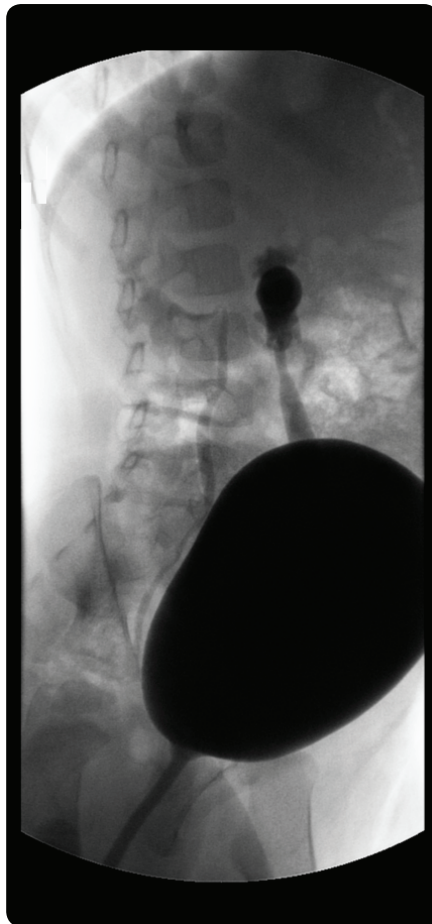
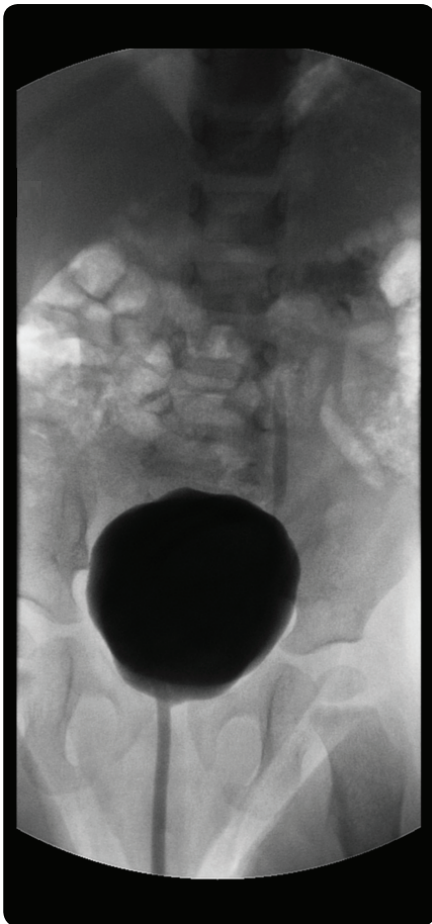
Lower Gastrointestinal Imaging

When performing a lower gastrointestinal procedure, measure and manage radiation exposure during examinations with the fluoro DAP meter. Further manage dose exposure with 192 anatomical program functions, allowing the operator to select the optimal tool for the procedure.

Barium Enema



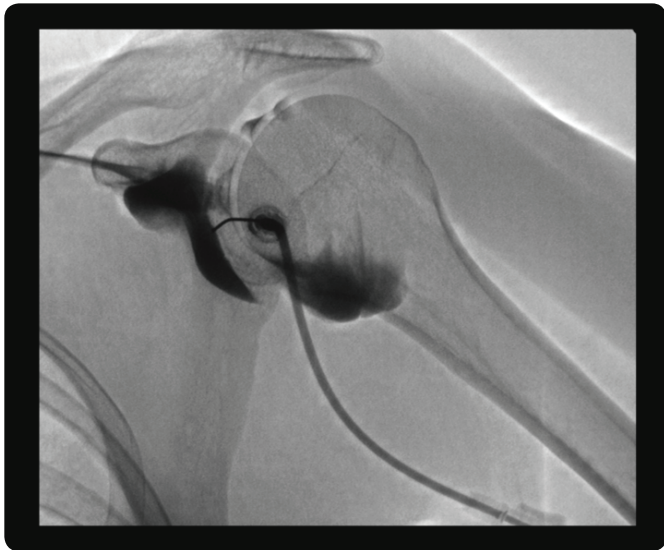
Voiding Cystourethrogram



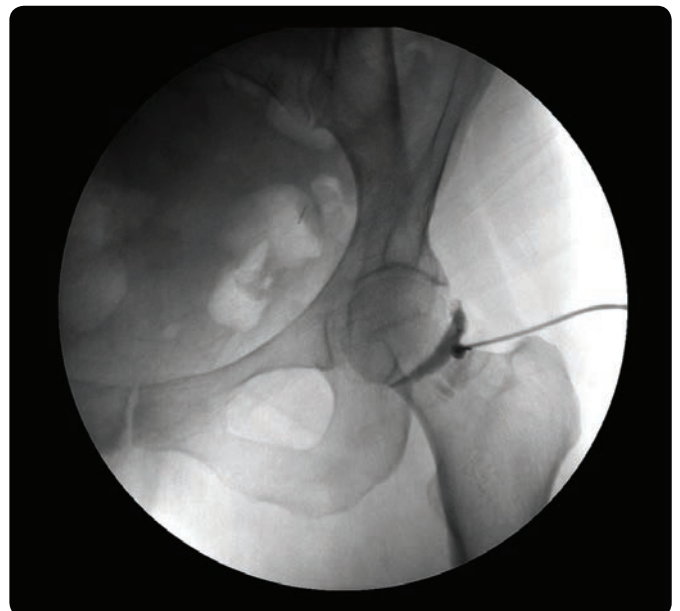
Optimum Image Quality at Reduced Dose

Complete with our DoseRite technology, the Kalare offers dose management tools designed to help clinicians minimize X-ray exposure while maintaining high image quality and enhancing patient and operator safety and support.

Arthrography



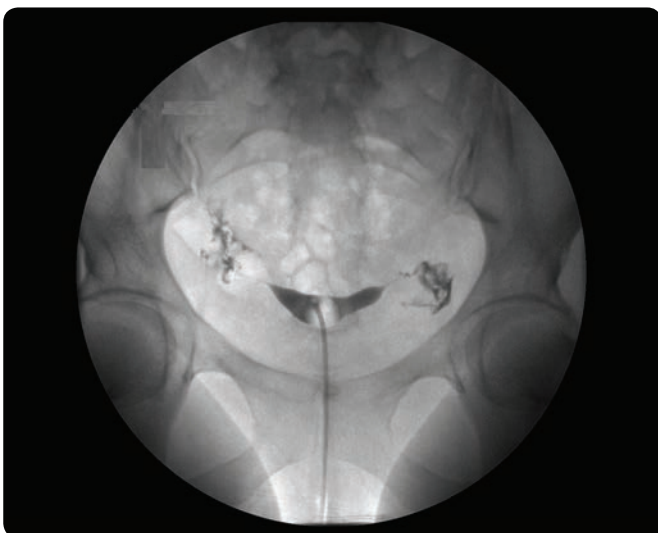
Hip Injection



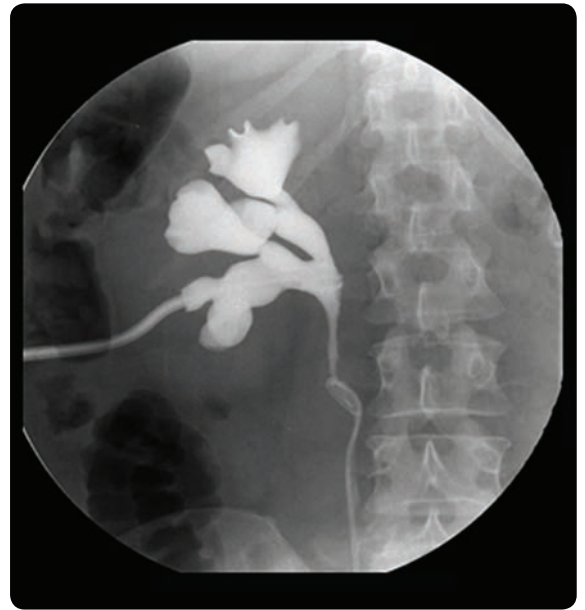
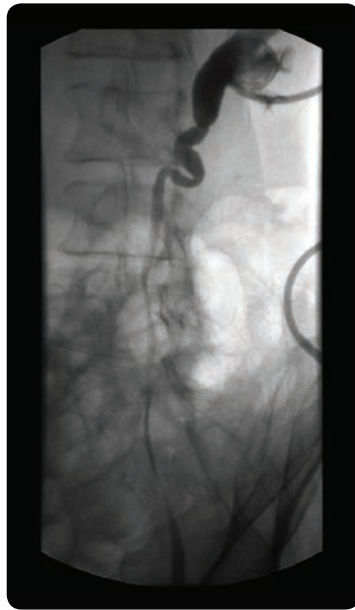
Lumbar Myelogram



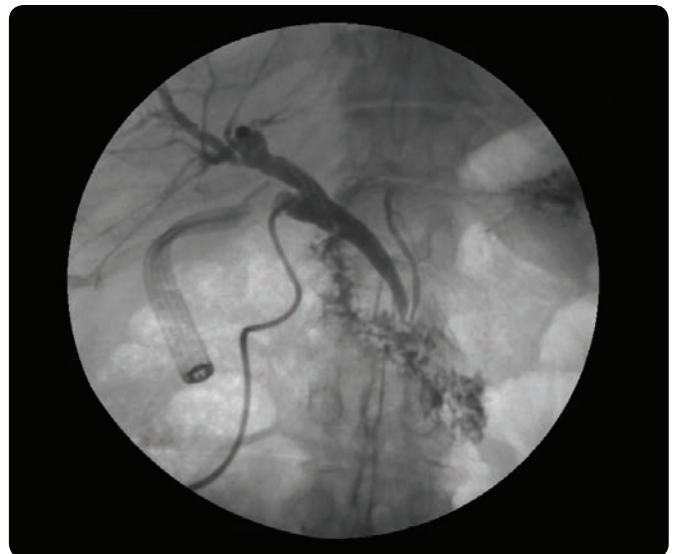
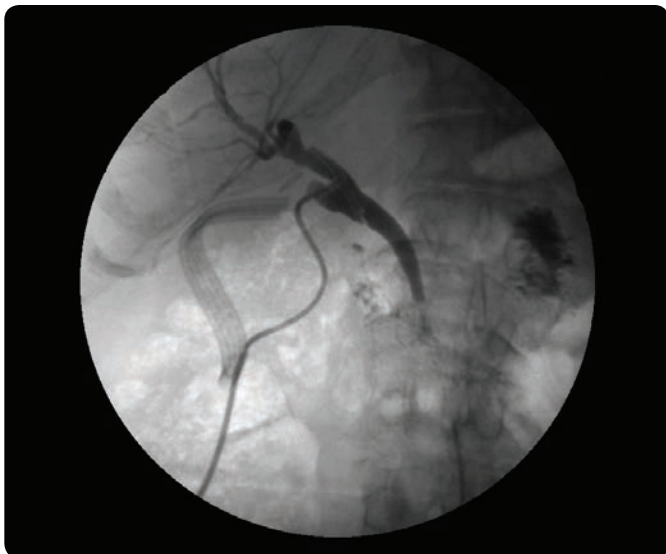
Hysterosalpingogram

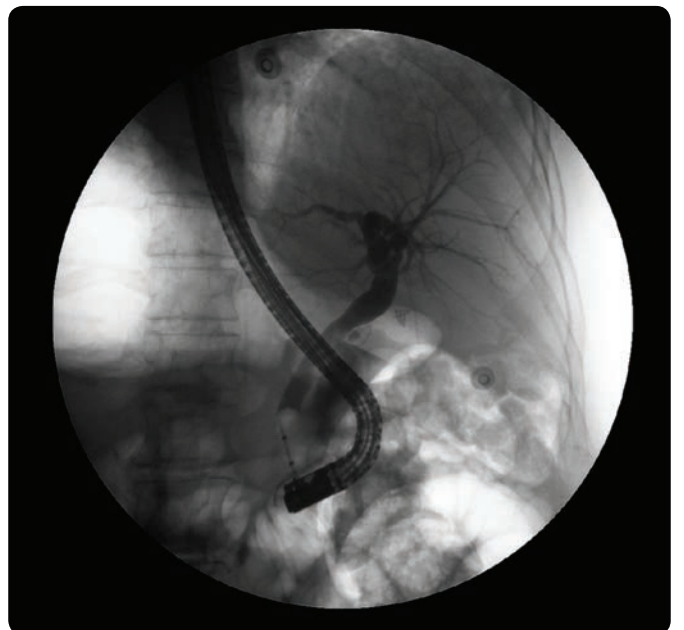
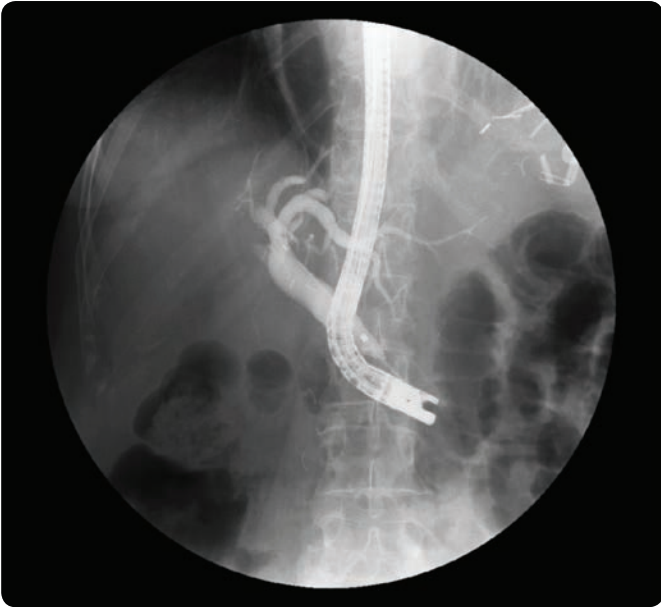


Nephrostomy



T-tube/Cholangiogram





Follow us: <https://us.medical.canon>



@CanonMedicalUS



+CanonMedicalUS



Canon Medical Systems USA, Inc.



+CanonMedicalUS

Canon

CANON MEDICAL SYSTEMS USA, INC.

<https://us.medical.canon>

2441 Michelle Drive, Tustin CA 92780 | 800.421.1968

©Canon Medical Systems Corporation 2018. All rights reserved.

Design and specifications are subject to change without notice.

Kalare, DoseRite and Made for Life are trademarks of Canon Medical Systems Corporation. Google+ logo and YouTube logo are trademarks of Google Inc. TWITTER, TWEET, RETWEET and the Twitter logo are trademarks of Twitter, Inc. or its affiliates. LinkedIn, the LinkedIn logo, the IN logo and InMail are registered trademarks or trademarks of LinkedIn Corporation and its affiliates in the United States and/or other countries.

XR12686US MCAXR0334EB

Made For life