

Angiography



High quality visualization of the anatomy is of great significance during diagnosis and treatment of Coronary Artery Disease (CAD).

Image artifacts may hide or mimic pathological conditions.

Enable Confident Diagnosis for Cardiology



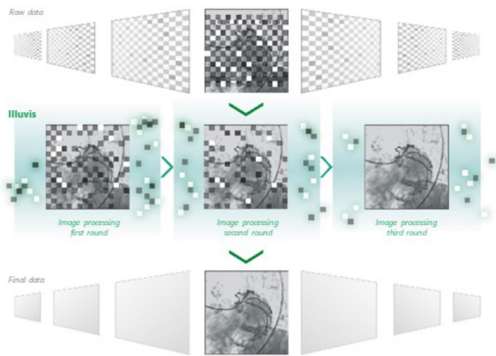
"The Alphenix is a system with unique features to minimize radiation dose and improve visualization.

It's a system made for physicians."¹

— *Salman A. Arain, MD, FACC*
McGovern Medical School at UTHealth
Houston, Texas

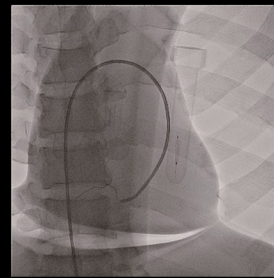
Image resolution for tomorrow's interventions

Optimize IQ with ImagingRite

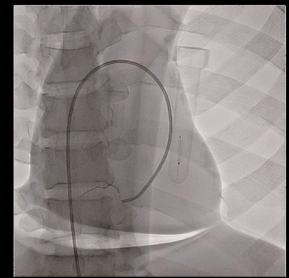


- Advanced image processing:
 - Reduces background noise
 - Enhances features
- Analyzes and processes each frame in real-time

ROI Control



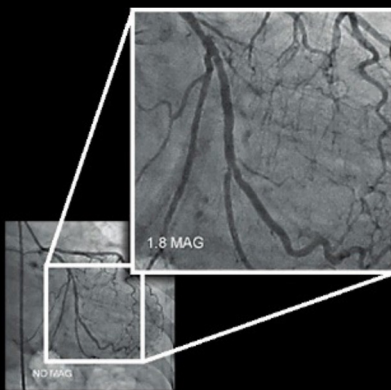
Conventional Processing



ROI Control

- Automatically senses excessively bright and excessively dark areas in the ROI
- Calculates the appropriate X-ray conditions

Dose optimization tools with DoseRite



- Digitally increase image size without Field Of View magnification in real-time during fluoroscopy and acquisition
- Reposition the Region Of Interest with zero dose to the patient
- Store acquired fluoroscopic images

High Definition Detector²



Standard FOV



True High Definition FOV

2 flat panel detectors combined into one:

- Industry standard pixel size, enabling the operator to provide high quality images at low dose
- 76 micron pixel, with more than twice the spatial resolution of conventional flat panel detectors³

¹ The clinical results, performance and views described are the experience of the clinicians. Results may vary due to clinical setting, patient presentation and other factors

² Only optionally available on the Alphenix Core+ with 12"x12" & 12"x16" FPD, Alphenix Biplane with 12"x12" & 12"x16" FPD, Alphenix Sky+ with 12"x16" FPD and Alphenix 4D CT Sky+ Aquilion ONE / GENESIS Edition with 12"x16" FPD and Alphenix 4DCT Sky+ Aquilion Prime SP with 12"x16" FPD.

³ Documented testing has demonstrated imaging capabilities with up to 2.5x greater resolution.

Follow us: <https://us.medical.canon>



@CanonMedicalUS



Canon Medical Systems USA, Inc.



+CanonMedicalUS

CANON MEDICAL SYSTEMS USA, INC.

<https://us.medical.canon> | 2441 Michelle Drive, Tustin CA 92780 | 800.421.1968

©Canon Medical Systems, USA 2023. All rights reserved. Design and specifications subject to change without notice. Alphenix, Dose Rite and Made for Life are trademarks of Canon Medical Systems Corporation. Google+ logo and YouTube logo are trademarks of Google Inc. TWITTER, TWEET, RETWEET and the Twitter logo are trademarks of Twitter, Inc. or its affiliates. LinkedIn, the LinkedIn logo, the IN logo and InMail are registered trademarks or trademarks of LinkedIn Corporation and its affiliates in the United States and/or other countries.

VLCSS14193US

Made For life