

## Ultrasound



High quality visualization of the anatomy is of great significance during diagnosis and treatment of Coronary Artery Disease (CAD).

Suboptimal image quality may lead to misdiagnosis or the need for additional tests.<sup>1</sup>

### Enable Confident Diagnosis for Cardiology

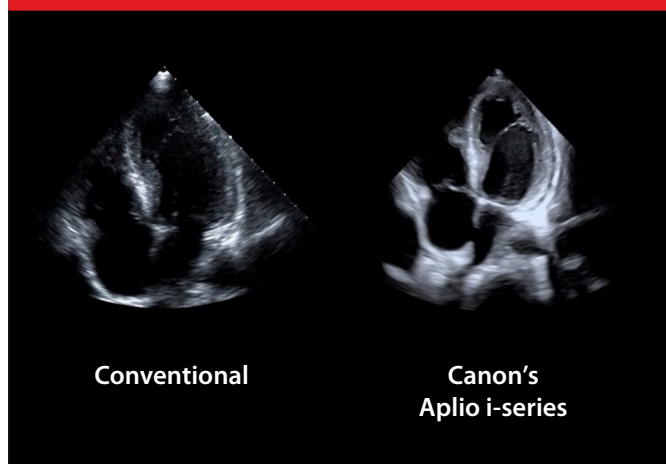
**"The image quality on Canon's new systems is wonderful.** Not only does it penetrate extremely well, but the image on that very deep, very tough to image patient is still very nice."<sup>2</sup>



— Elizabeth F. McIlwain  
MHS, ACS, RCS, FASE  
Operations Coordinator  
for Cardiology, Special  
Procedures and Cardiac and  
Pulmonary Rehab  
West Jefferson Medical Center  
New Orleans, Louisiana

# Outstanding imaging clarity for a wide range of cardiac patients

## High Image Quality



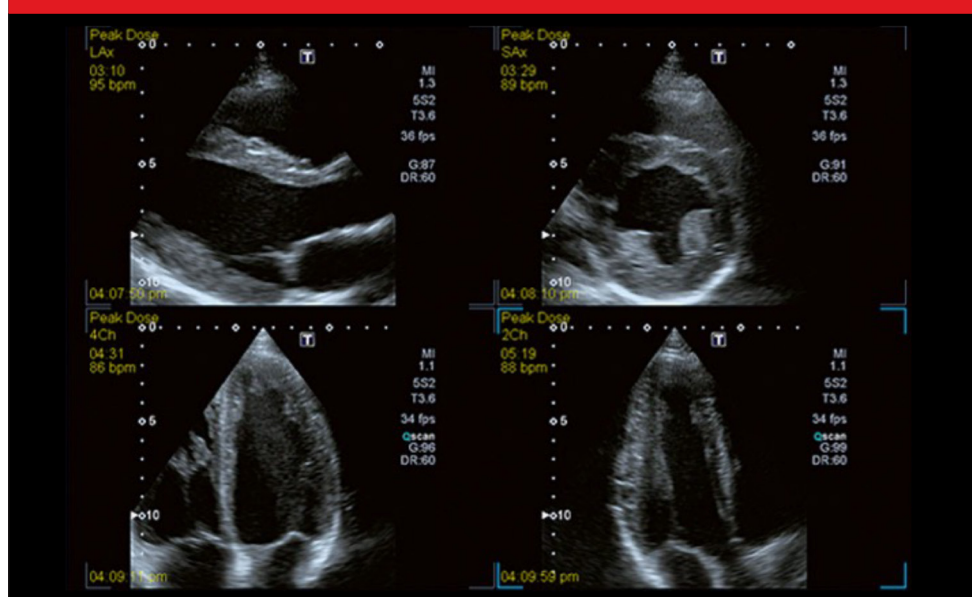
- Powerful imaging technologies designed for the technically difficult patient

## Contrast Imaging<sup>3,4</sup>



- LVO allows evaluation of left ventricular function

## Stress Echo<sup>5</sup>



- Customizable Stress Echo Package enables rapid view acquisition, selection, and regional wall motion scoring

<sup>1</sup>C. Wang et al. Recent Advances in Echocardiography. J Med Ultrasound. 2017 May; 25(2): 65-67. doi: 10.1016/j.jmu.2017.03.010

<sup>2</sup>The clinical results, performance and views described are the experience of the clinicians. Results may vary due to clinical setting, patient presentation and other factors

<sup>3</sup>Optionally available on the Aplio i-series / Prism Edition and the Aplio a-series

<sup>4</sup>Per FDA approved contrast agent prescribing information

<sup>5</sup>Optionally available on the Aplio i-series / Prism Edition, Aplio a-series and Xario 200G

Follow us: <https://us.medical.canon>

 @CanonMedicalUS

 Canon Medical Systems USA, Inc.

 +CanonMedicalUS

CANON MEDICAL SYSTEMS USA, INC.

<https://us.medical.canon> | 2441 Michelle Drive, Tustin CA 92780 | 800.421.1968

©Canon Medical Systems, USA 2022. All rights reserved. Design and specifications subject to change without notice.

Made for Life is a trademark of Canon Medical Systems Corporation.

CardiologyCSS14138US

*Made For life*