

Ultrasound



Quantitative image analysis has become routine to assess patient risk.

Quantitative analysis can enable assessment of cardiovascular risk, and depiction of subtle changes.

Advanced Quantitative Image Analysis for Cardiology

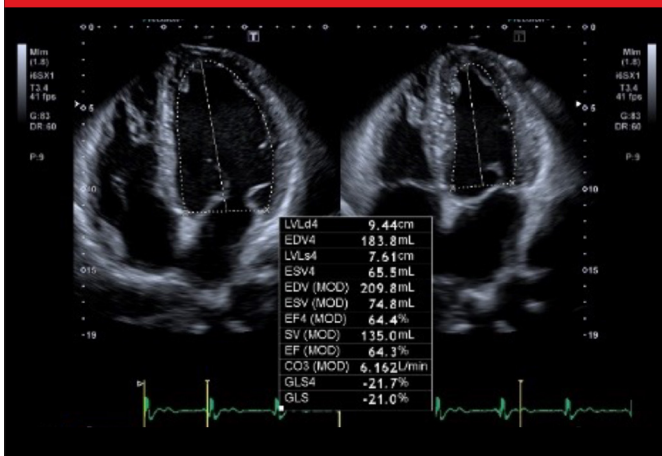
“I love the fact that just **with the touch of a button** you have a Simpson’s EF and a Global Longitudinal Strain. It’s definitely **a time saver** for us.”¹



— Elizabeth F. McIlwain
MHS, ACS, RCS, FASE
Operations Coordinator
for Cardiology, Special
Procedures and Cardiac and
Pulmonary Rehab
West Jefferson Medical Center
New Orleans, Louisiana

Automating Tedious Measurements

Auto-EF with Global Longitudinal Strain (GLS) with AI²



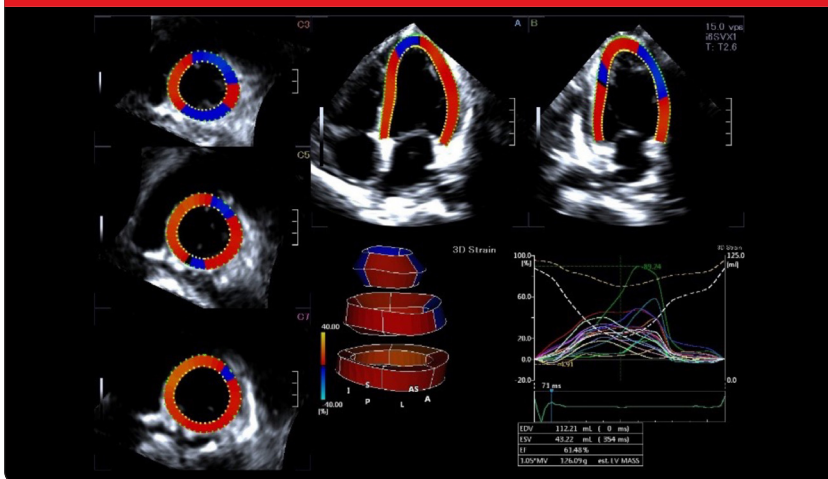
- Automatic ejection fraction with Full-assist function is powered by artificial intelligence
- Volume measurements
- Added automatic integration of Strain measurements
- Eliminates the need for dedicated Strain analysis

2D Wall Motion Tracking³



- 2D Wall Motion Tracking with Full-assist is powered by artificial intelligence⁴
- Automated Strain measurements
- Added automatic calculation of ejection fraction, left ventricle volumes and other important parameters
- At bedside in just a few clicks

3D Wall Motion Tracking⁵



- Automated regional and global Strain measurements
- Advanced wall motion tracking technology
- Provides visual and quantitative access to global and regional myocardial wall motion dynamics

¹The clinical results, performance and views described are the experience of the clinicians. Results may vary due to clinical setting, patient presentation and other factors

²Only available on the Aplio i-series / Prism Edition and Aplio a-series

³Available on Aplio i-series / Prism Edition, a-series, and Xario 200G

⁴2D WMT with AI is optionally available on the Aplio a-series and i-series / Prism Edition

⁵Only available on the Aplio i900 / Prism Edition

Follow us: <https://us.medical.canon>



CANON MEDICAL SYSTEMS USA, INC.

<https://us.medical.canon> | 2441 Michelle Drive, Tustin CA 92780 | 800.421.1968

©Canon Medical Systems, USA 2022. All rights reserved. Design and specifications subject to change without notice. Made for Life is a trademark of Canon Medical Systems Corporation.

CardiologyCSS14123US

Made For life