

**Canon**



***Aplio a550***

Advanced. Seamless.  
Integrated.



## Intelligent healthcare made easy

Aplio a550 offers flexible productivity features to help you optimize your workflow.



## ***Aplio a550***



## Advanced. Seamless. Integrated.

Aplio a550 integrates industry-leading imaging technologies, advanced applications and intuitive controls for the busy clinician. Designed to enhance productivity and throughput while maximizing clinical confidence, Aplio a550 is the ideal system for routine imaging. Its extensive selection of advanced applications provides confidence that your system will meet a wide range of clinical needs.

# Boost your clinical confidence

Aplio's powerful imaging technologies provide you with better image quality with reduced clutter, strengthened signal and improved visualization. Aplio a-series' unique aBeam architecture provides the capability to ensure that all of Aplio's imaging technologies work together seamlessly for greater uniformity across all applications.



Precision+ offers outstandingly smooth images with sharpened outline of lesions, enhanced image uniformity and reduced clutter.

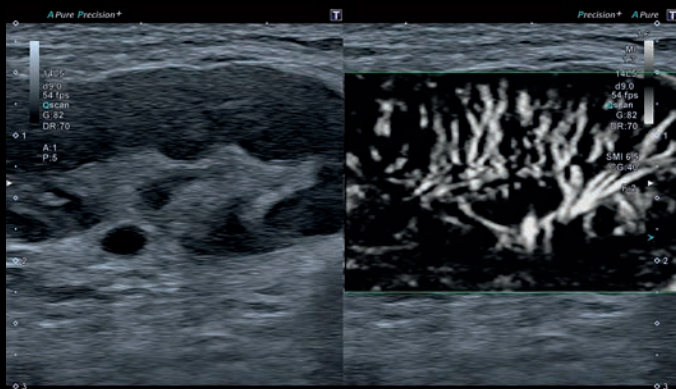
ApliPure+ compounding delivers increased imaging contrast and reduced speckle noise to improve visualization.

Differential Tissue Harmonics provides harmonic images of incredible spatial resolution alongside greatly enhanced penetration.

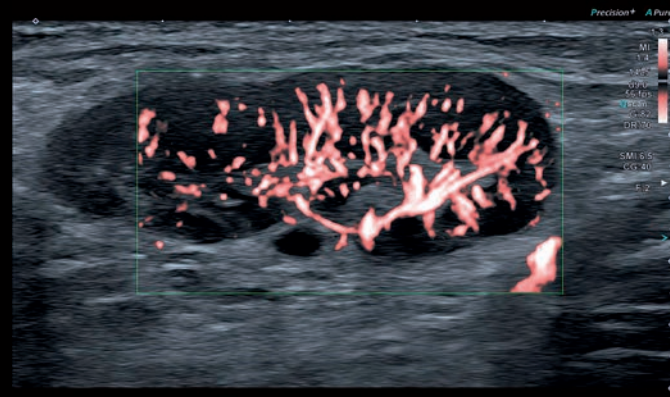
4

# Seeing the unseen

Experience color flow imaging with extraordinary detail and definition on Aplio a550. Superb Micro-vascular Imaging (SMI) expands the range of visible blood flow to a level of detail never before seen with diagnostic ultrasound. Exclusive iSMI now also allows you to image larger regions of interest without a reduction in frame rate.



SMI's level of vascular visualization, combined with high frame rates, advances diagnostic confidence when evaluating lesions, cysts and tumors.



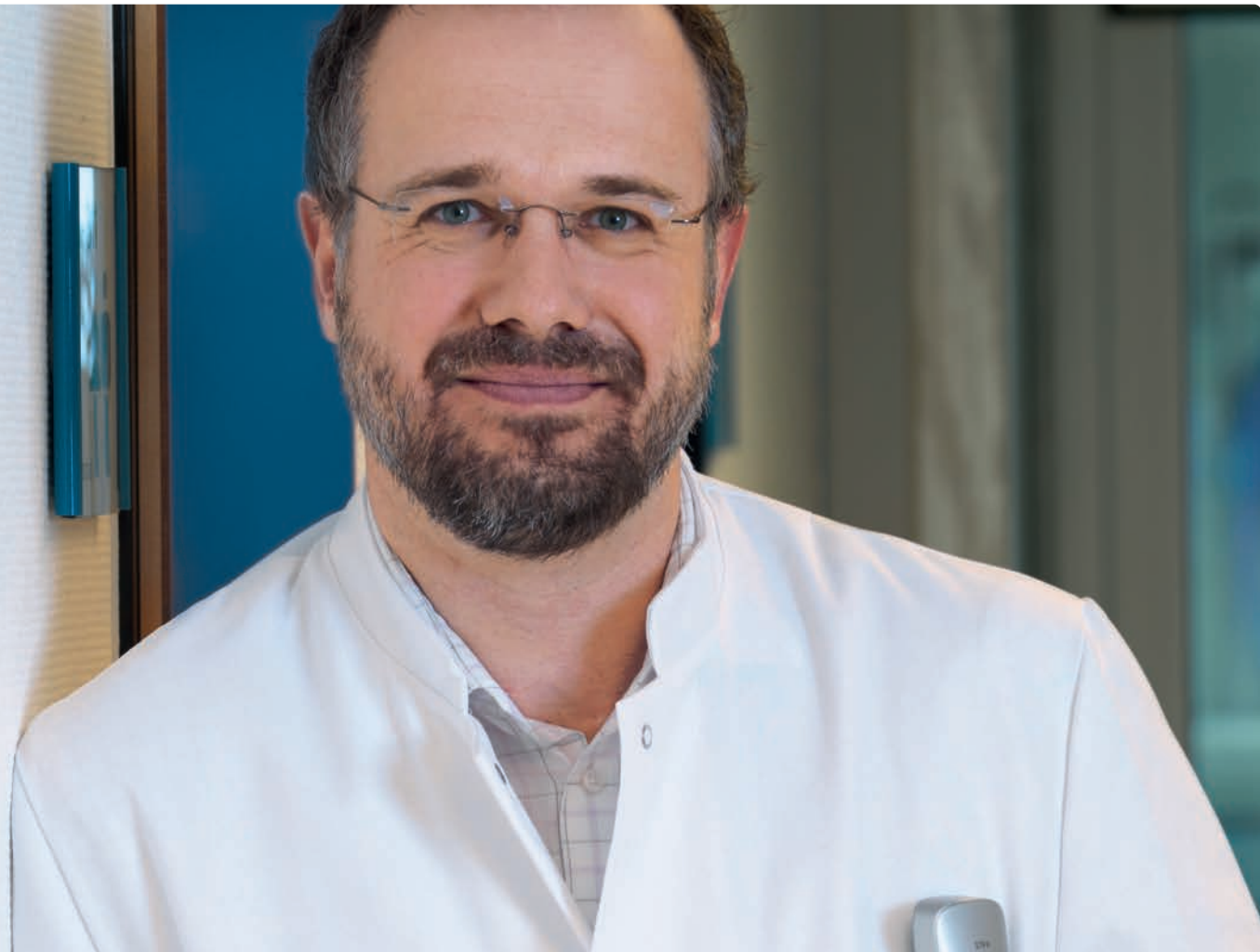
Color-coded SMI allows you to depict flow and greyscale information with high temporal and spatial information simultaneously.



# Welcome to the age of assisted imaging

With Canon's suite of intelligent, forward-thinking technologies it's now easier than ever to deliver a confident diagnosis to every patient. While Aplio's smart algorithms allow you to create simple and streamlined workflows, they can also help to deliver fast and confident results so you can deliver a more personalized treatment of your patients.

**Advanced technologies  
applied to expert  
knowledge help me  
improve workflow.**



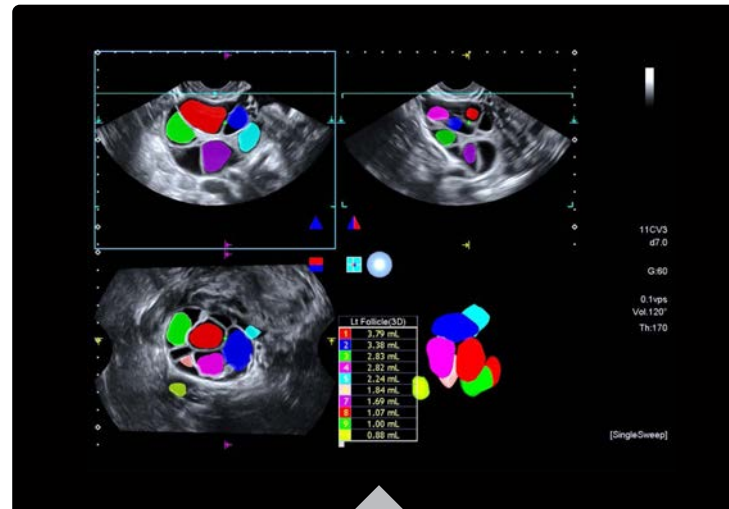


## Intelligent healthcare made easy

Aplio a550 latest software provides flexible, AI-assisted productivity functions enabling you to optimize workflow.

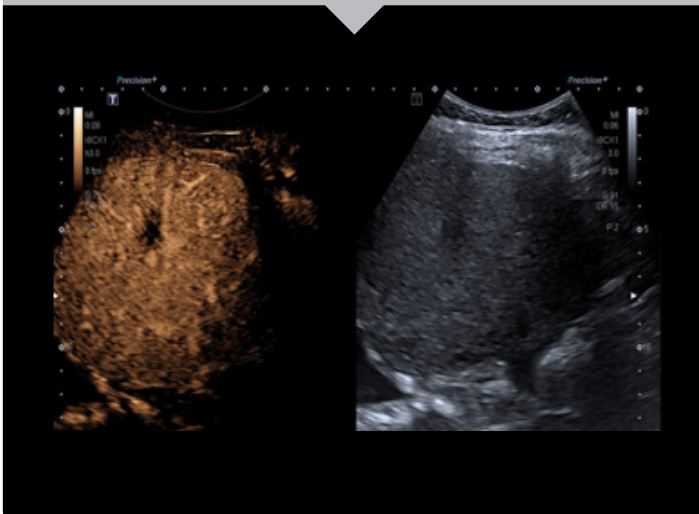
### Contrast Exam Protocols

Contrast exam protocols can assist in streamlining the CEUS exam, with the potential to assist with correct timing and imaging transitions as well as proscribed lab-specific workflows.



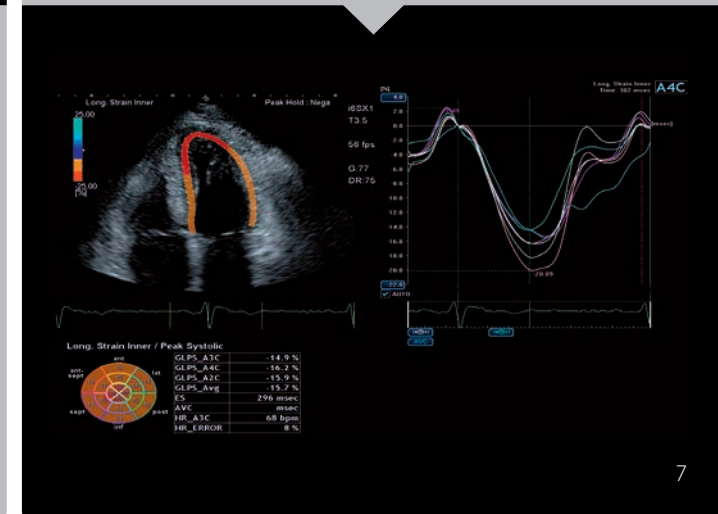
### Automating measurements

The automated contour tracing powered by AI helps you improve your workflow consistency and efficiency simply at the touch of a button.



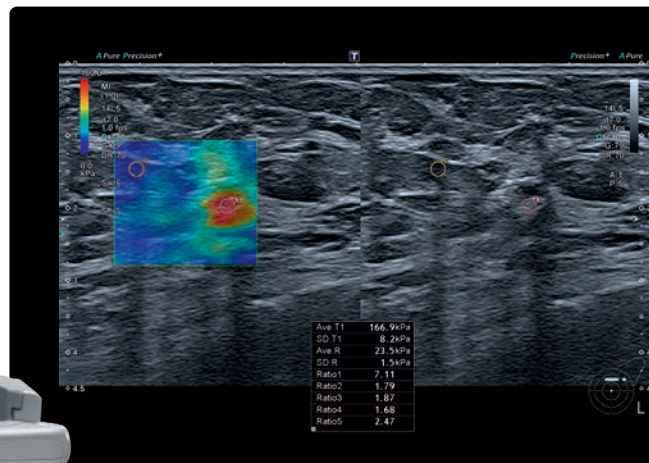
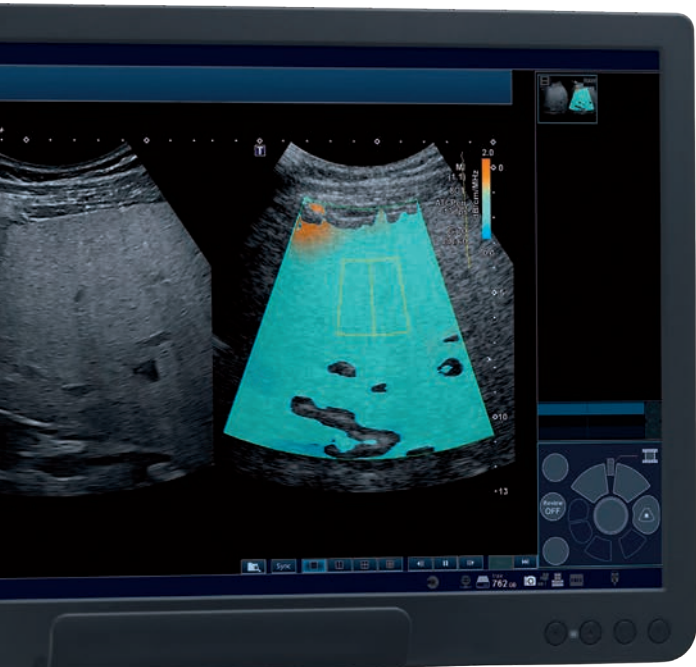
### Automated Follicle Count

The systems' automated follicle count software largely benefits from the high image quality, allowing for fast and easy determination of the number and size of the follicles.

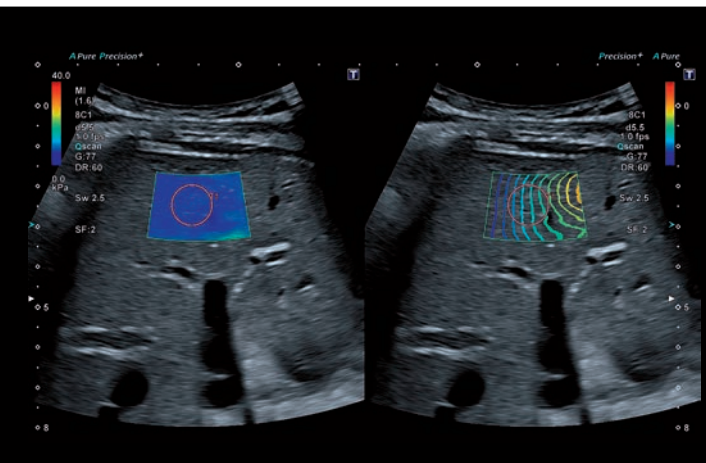


# Increase your confidence, expand your capability

Aplio's suite of advanced imaging and quantification functions provides the metrics to help you quickly diagnose with confidence. Combined with tools for exceptional visualization and confident measurements, it can help you optimize your patients' clinical pathway.

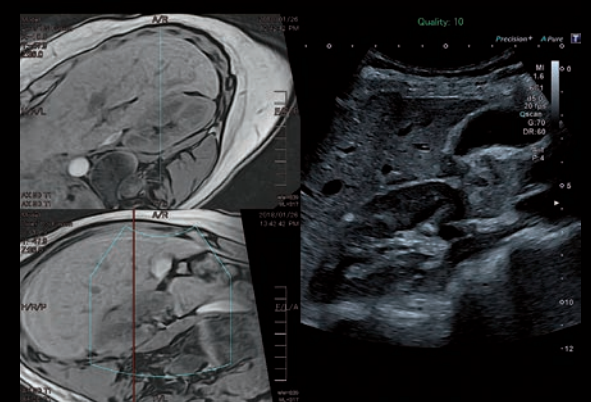
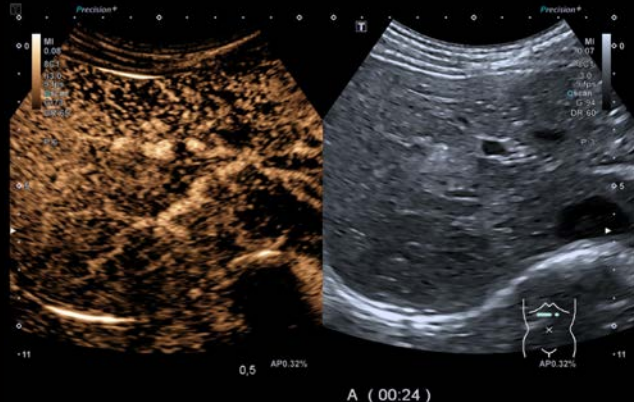
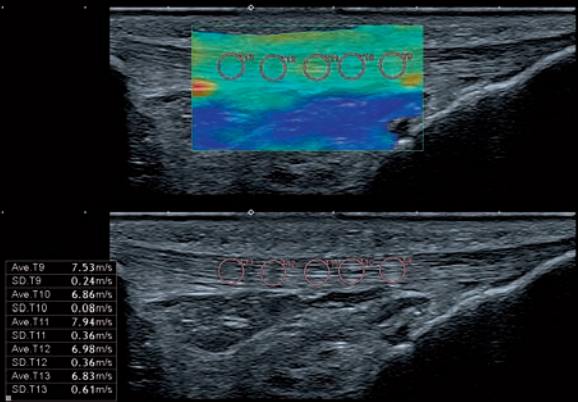


Canon's shear wave technology provides a quantitative measure and realtime display of tissue elasticity in a variety of clinical settings ranging from abdominal to small parts examinations.



Smart Maps help you visualize and quantify shear wave propagation in realtime. Aplio's unique propagation map is a powerful and intuitive tool to visually assess the quality of an elastogram.





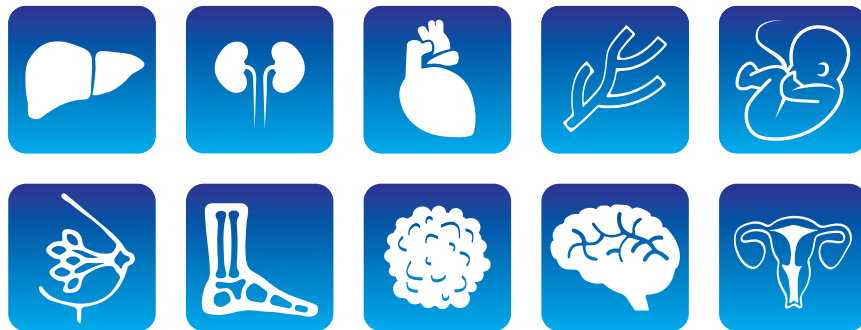
The system's comprehensive strain elastography suite with raw data functionality assists you in localizing and assessing palpable masses with high confidence.

Aplio's comprehensive CEUS imaging and quantification package allows you to assess perfusion dynamics in a wide range of clinical settings, including an ample variety of specialized exams.

For advanced lesion assessment, Smart Fusion allows you to work in multiple imaging modes, including color Doppler and CEUS. The quad display shows the live ultrasound image in sync with multiple views of the pre-loaded CT, MRI or PET data.

# A complete multipurpose solution

Aplio a550 is a truly multipurpose solution with consistently high-quality imaging, streamlined workflow and expert tools for a very wide variety of clinical specialties.



## Modular by design

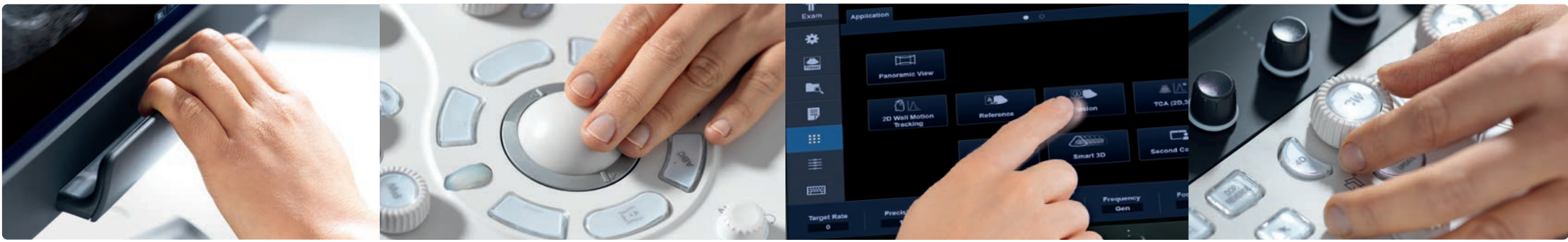
Aplio's modular concept and the fully programmable user interface make it easy to customize features and functions to exactly meet your needs now and into the future.





Aplio's comprehensive report functions can help you ensure consistent documentation of results for every examination.





# Make your work flow with ergonomics that excel

Aplio a550 is designed to make your imaging task simple and quick while allowing you to scan in a comfortable, patient-engaging position. The system provides a host of intelligent workflow support and automation tools, helping you to achieve rapid results with consistent high quality for a variety of patient conditions.

## Optimal ergonomics and mobility

Small and light, Aplio a550 is easy to maneuver and simple to set up in an ergonomically sound position for any scanning situation.



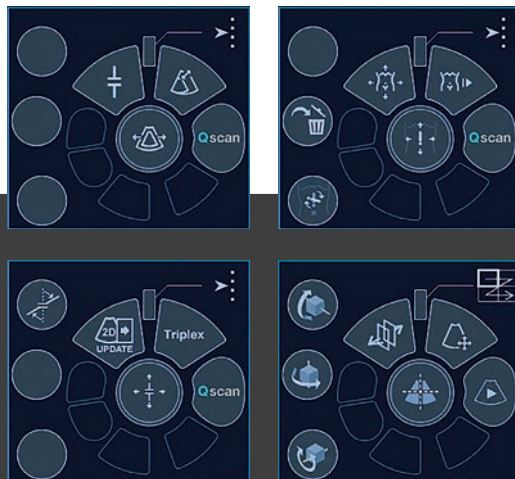
Large 23" monitor with fully articulating arm and handgrip

Floating panel with 36 cm height adjustment range

Comfortable handles on both sides for easy transport and positioning

Backlit transducer connectors and convenient footrest

Easy-roll casters with central brake to aid system relocation



Aplio's context-sensitive user interface is designed to make your imaging task simpler and quicker.

# Collaborate and communicate

Aplio a550 offers optimized workflow and expert tools for a very wide range of clinical specialties, including a wealth of features that allow you to connect to your network, to collaborate with experts and communicate directly with colleagues or Canon specialists.



Aplio connects seamlessly into hospital networks providing a full-spectrum solution that helps you manage patients and exams more efficiently while embracing standardized data formats.



For smaller hospitals or practices without an extensive hospital network, Aplio also offers the option of connecting to a local NAS in order to store all data securely.<sup>1</sup>



With dedicated imaging and navigation tools, Aplio a550 is perfectly suited to enhance clinical confidence in complex, multi-disciplinary interventions.



As a true multipurpose solution, Aplio allows you to work hand in hand with peers from other clinical specialties and to share findings with ease.

<sup>1</sup>Available with optional Network Storage kit



**Aplio a550**



### **Remote connection**

Need expert advice? Or want to share some findings with peers? With Canon's optional ApliGate solution you can view securely—right from your workplace.



### **Cloud services**

The system's integrated Tricefy\* option gives you direct access to cloud-based communication and image management so you can instantly share images and reports with referring physicians or patients.



### **Remote support**

Connecting Aplio with Canon's InnerVision remote support is simple, secure and provides you with a wealth of benefits that you'll be able to enjoy directly at your system.



\*Tricefy requires an additional third-party subscription and may not be available in all regions.

# *Aplio a-series*

Follow us: <https://us.medical.canon>



@CanonMedicalUS



Canon Medical Systems USA, Inc.



+CanonMedicalUS

## **Canon**

CANON MEDICAL SYSTEMS USA, INC.

<https://us.medical.canon>

2441 Michelle Drive, Tustin CA 92780 | 800.421.1968

©Canon Medical Systems, USA 2022. All rights reserved.

Design and specifications are subject to change without notice.

Altivity, Aplio, ApliGate, ApliPure and Made for Life are trademarks of Canon Medical Systems Corporation. Tricefy is a trademark of Trice Imaging, Inc. YouTube logo is a trademark of Google Inc. TWITTER, TWEET, RETWEET and the Twitter logo are trademarks of Twitter, Inc. or its affiliates. LinkedIn, the LinkedIn logo, the IN logo and InMail are registered trademarks or trademarks of LinkedIn Corporation and its affiliates in the United States and/or other countries. Canon Medical Systems Corporation meets internationally recognized standards for Quality Management System ISO 9001, ISO 13485. Canon Medical Systems Corporation meets the Environmental Management System standard ISO 14001.

Disclaimer: Some features presented in this brochure may not be commercially available on all systems shown or may require the purchase of additional options.

Please contact your local Canon Medical Systems representative for details.

ULCS14176US

*Made For life*