

Canon



Aplio a-series

Advanced. Seamless.
Integrated.



Intelligent healthcare made easy

Aplio a-series offers a range of flexible productivity features to help you optimize your workflow, diagnostic performance and imaging consistency.

Aplio *a-series*



Advanced. Seamless. Integrated.

Designed to increase productivity and throughput while maximizing clinical confidence of the busy clinician, *Aplio a-series* integrates industry-leading imaging, advanced applications and smart workflows into a small, lightweight package. The system can be scaled for a wide variety of clinical portfolios from shared services to dedicated, specialized applications. Its extensive range of advanced applications can help to strengthen your clinical confidence even for many of the most demanding of cases.



Shared services

Developed with an open architecture, *Aplio a-series* is ideal for busy imaging departments. *Aplio a-series* supports a wide variety of clinical applications, including advanced imaging and quantification. Its modular design allows you to tailor each system to your specific needs.

- + Customizable to your respective requirements
- + Straightforward, ergonomic user interface supporting a healthy working posture
- + Helping to reduce cost with shared specialty transducers

General imaging

With its intuitive user interface and smart workflow support, *Aplio a-series* enables you to provide fast, high-quality patient care without compromising your own wellbeing. A consistently high image quality across all clinical applications helps you to work more efficiently and confidently.

- + Consistently high performance across clinical applications
- + Simple user interface, smart workflows, increased productivity
- + Modular concept, add advanced functions whenever required



Dedicated applications

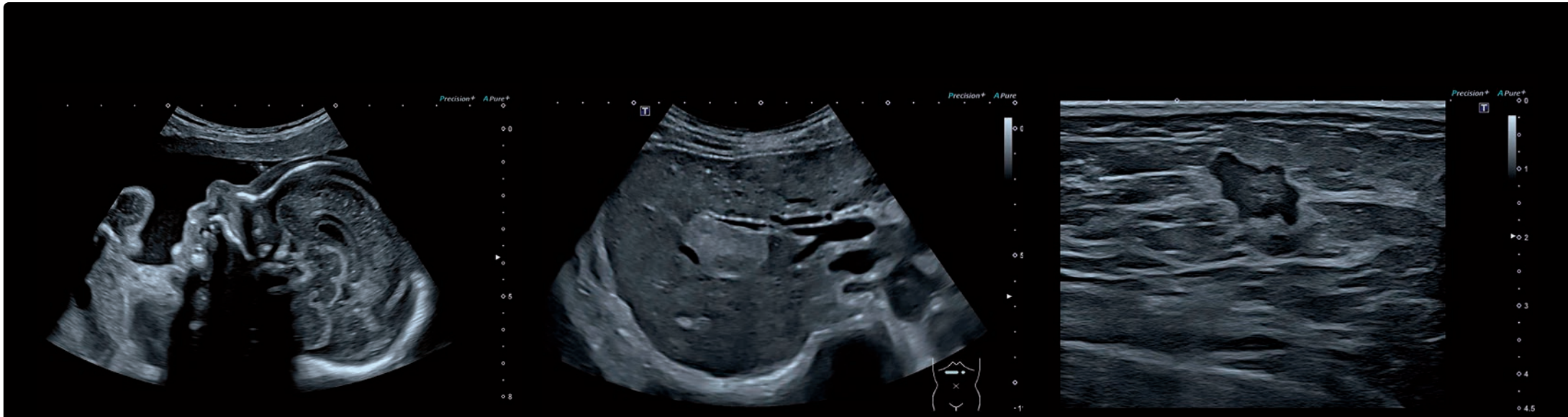
We have built *Aplio a-series* with the future of your business in mind. It is versatile, affordable and engineered with total flexibility, so you can tailor it to a specific purpose now and upgrade or expand as your needs evolve.

- + Versatile, affordable solution for dedicated clinical use
- + Comprehensive packages for a wide range of use cases
- + Flexible concept allowing you to extend your portfolio as needs evolve



Boost your clinical confidence

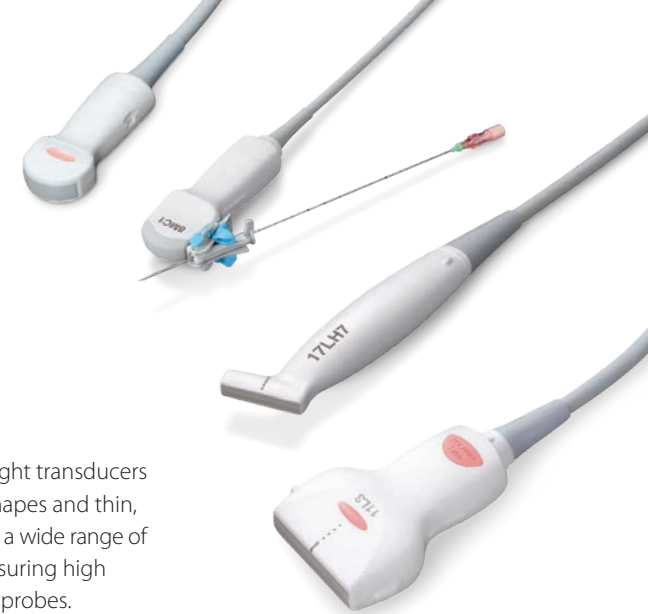
Aplio's powerful imaging technologies provide you with better image quality with reduced clutter, strengthened signal and improved visualization. The unique aBeam architecture provides the capability to ensure that all of Aplio's imaging technologies work together seamlessly for greater uniformity across all applications.



Precision+ offers outstandingly detailed images with sharpened outline of lesions, enhanced image uniformity and reduced clutter.

ApliPure+ compounding delivers increased imaging contrast and reduced speckle noise to improve visualization.

Differential Tissue Harmonics provides harmonic images of outstanding spatial resolution alongside greatly enhanced penetration.



Better diagnostics starts here

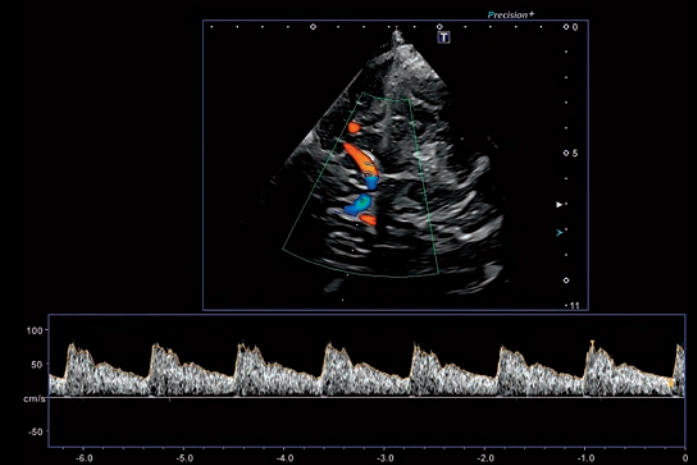
Designed to increase efficiency, the system's lightweight transducers feature outstanding clinical versatility, ergonomic shapes and thin, super-flexible cables. *Aplio a-series* is compatible with a wide range of transducers from across the Aplio product range, ensuring high productivity while helping reduce cost for specialty probes.



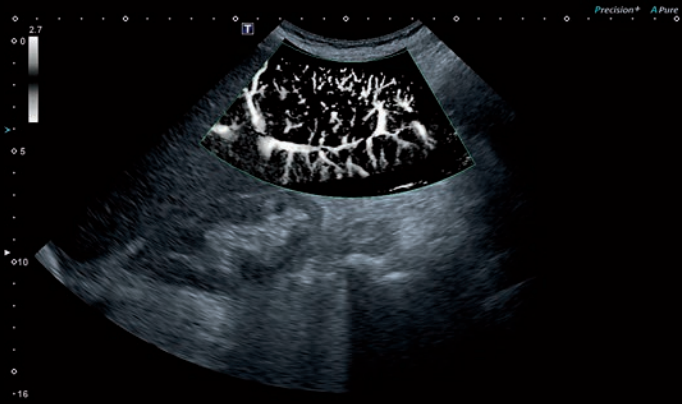
Ultra Wide View is a Canon-unique technology which increases the transducer's field of view while maintaining excellent image quality throughout – thus letting you simply see more.



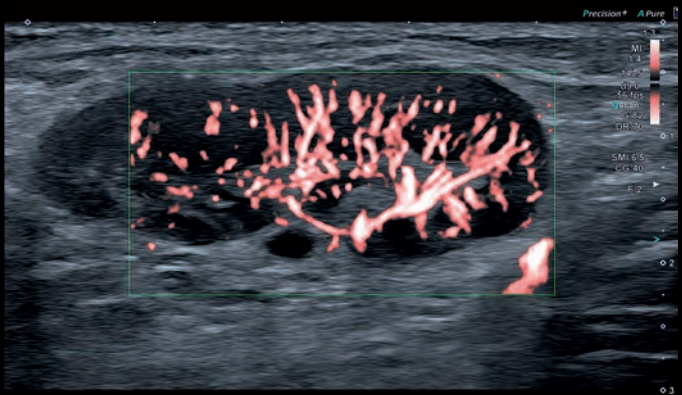
Aplio's sensitive color Doppler modes can help you reveal flow patterns with high definition and high frame rates while maintaining the full B-mode image quality.



Aplio's wideband transducer and signal processing technology delivers outstanding sensitivity, penetration and spatial resolution for all Doppler modes.



SMI's level of vascular visualization, combined with high frame rates, advances diagnostic confidence when evaluating lesions, cysts and tumors.

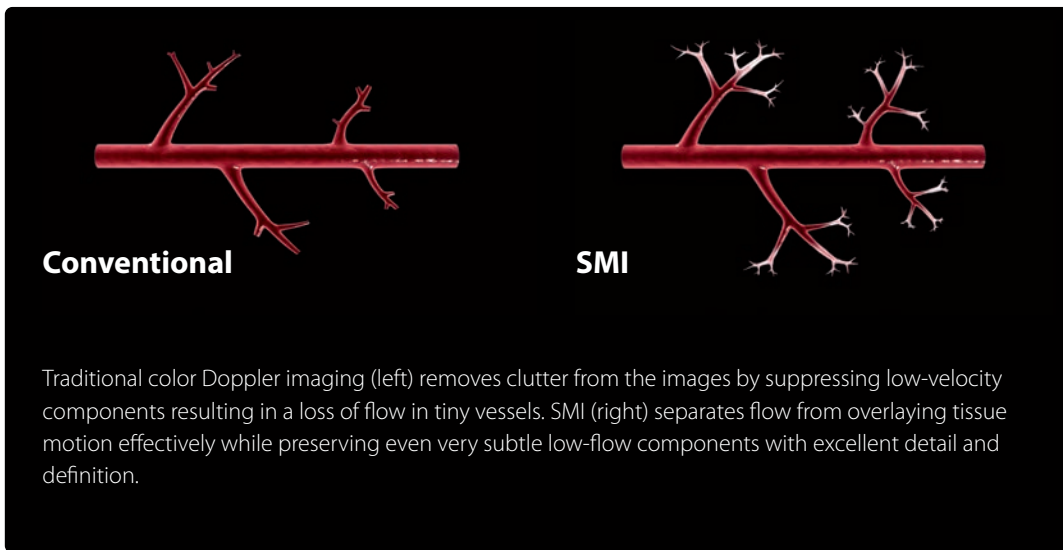


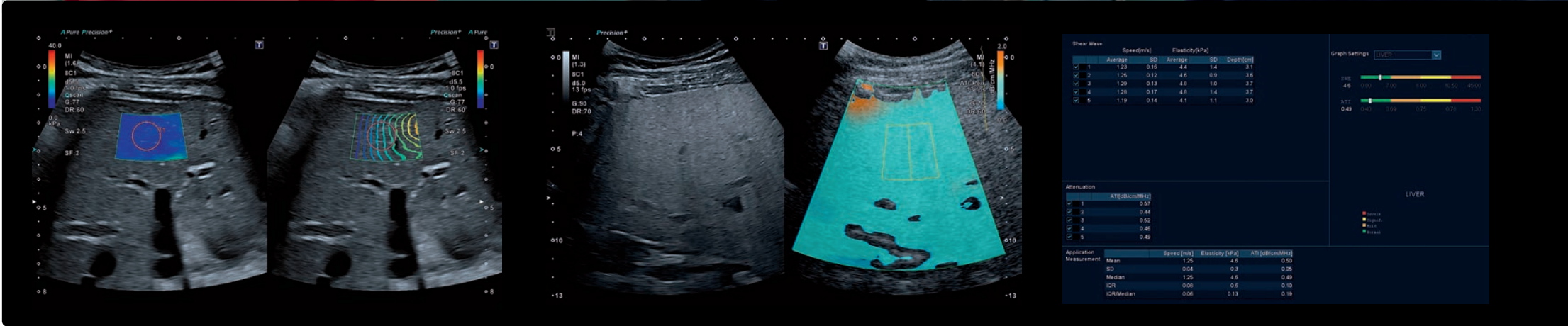
Color-coded SMI allows you to depict flow and greyscale information with high temporal and spatial resolution simultaneously.



Seeing the unseen

Experience color flow imaging with extraordinary detail and definition on *Aplio a-series*. Superb Micro-vascular Imaging (SMI) expands the range of visible blood flow to a level of detail never before seen with diagnostic ultrasound. Exclusive iSMI now also allows you to image larger regions of interest without a reduction in frame rate.





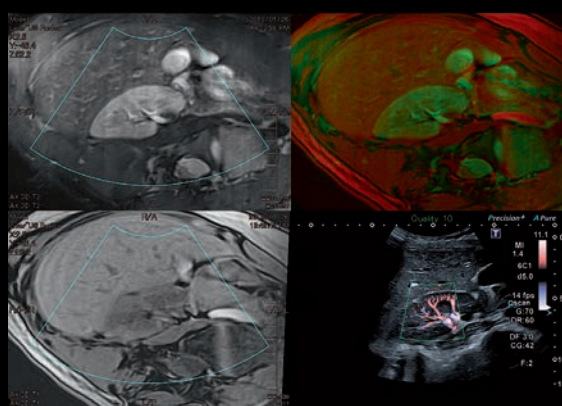
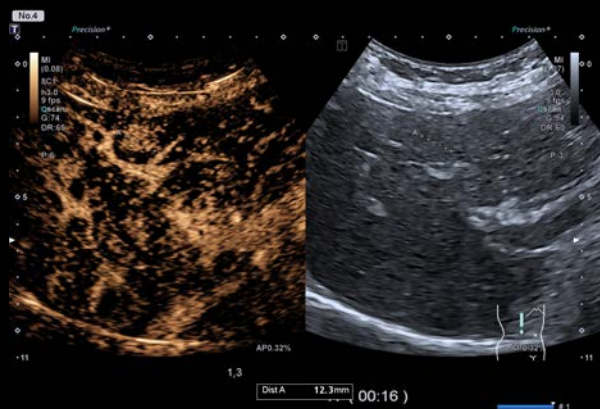
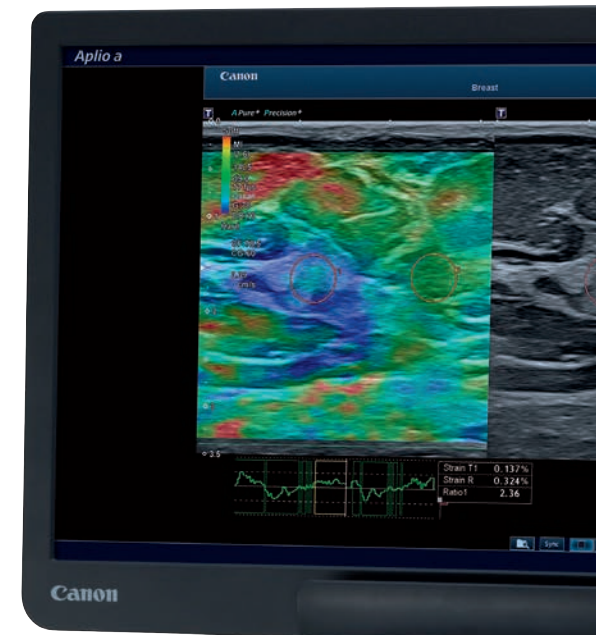
Canon's shear wave technology provides a real-time quantitative display of tissue elasticity in a variety of clinical settings. The unique propagation map can help to visually assess the quality of an elastogram.

Aplo provides a wide range of clinically proven analysis tools. Attenuation Imaging (ATI) for example enables the quantitative assessment of steatosis in patients with NAFLD and NASH, as part of the daily routine.

Combining the data from ultrasound and external exams into a single multi-parametric report can help you gain a more complete overview of available results.

Increase your confidence, expand your capability

Aplio's suite of advanced imaging and quantification functions provides the metrics to help you quickly diagnose with confidence. Combined with streamlined workflow and expert tools, it can help you optimize your patients' clinical pathway.



Aplio's comprehensive CEUS imaging and quantification package* allows you to assess perfusion dynamics in a wide range of clinical settings, including an ample variety of specialized exams.

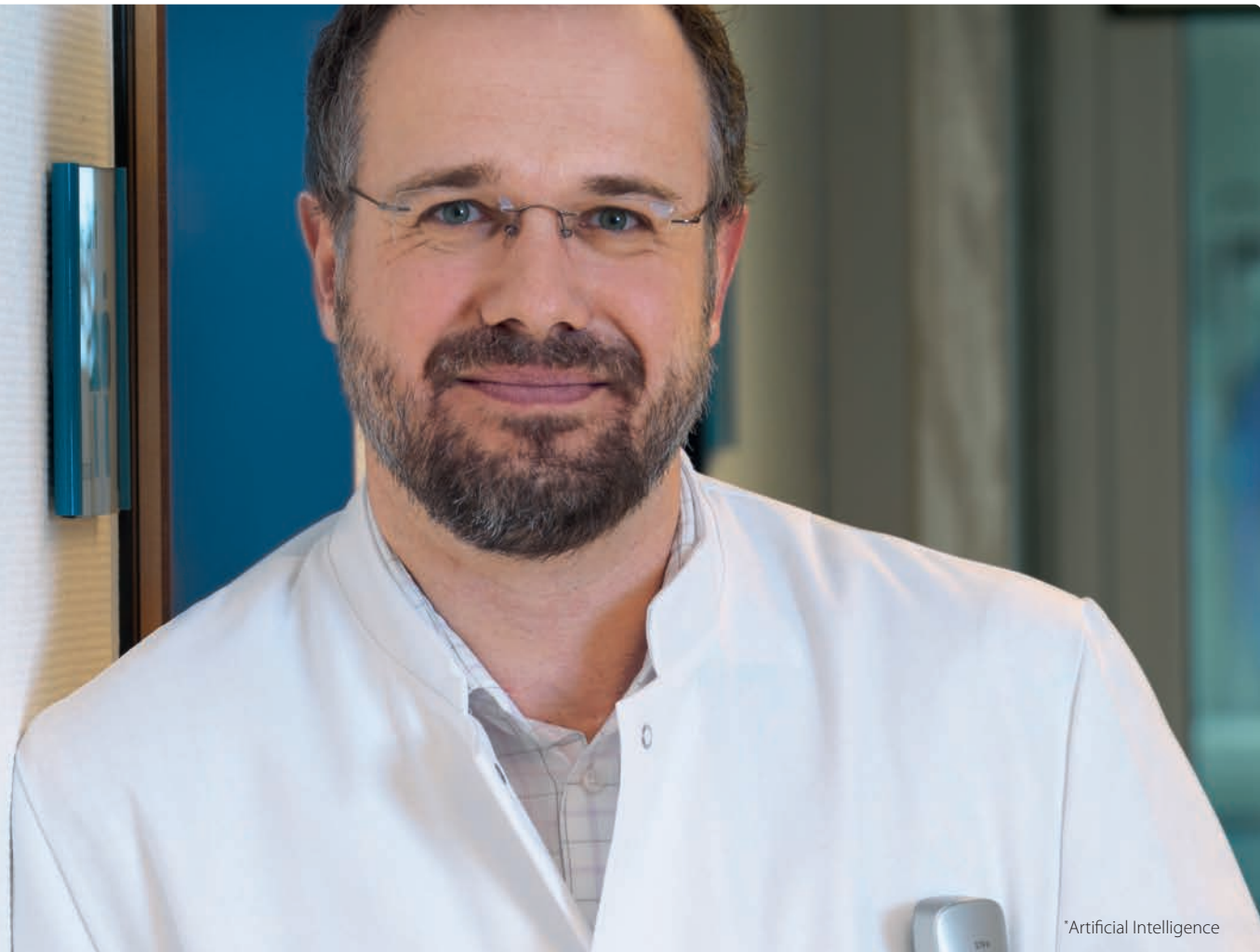
For advanced lesion assessment, Smart Fusion allows you to work in multiple imaging modes, including color Doppler and CEUS. The quad display shows the live ultrasound image in sync with multiple views of the pre-loaded CT, MRI or PET data.

*Quantification on a550 only

Welcome to the age of assisted imaging

With Canon's suite of intelligent, forward-thinking technologies, it's now easier than ever to deliver a confident diagnosis to every patient. While Aplio's smart algorithms allow you to create simple and streamlined workflows, they can also help to deliver fast and confident results so you can deliver personalized treatment of your patients.

**Advanced technologies
applied to expert
knowledge help me
improve workflow.**



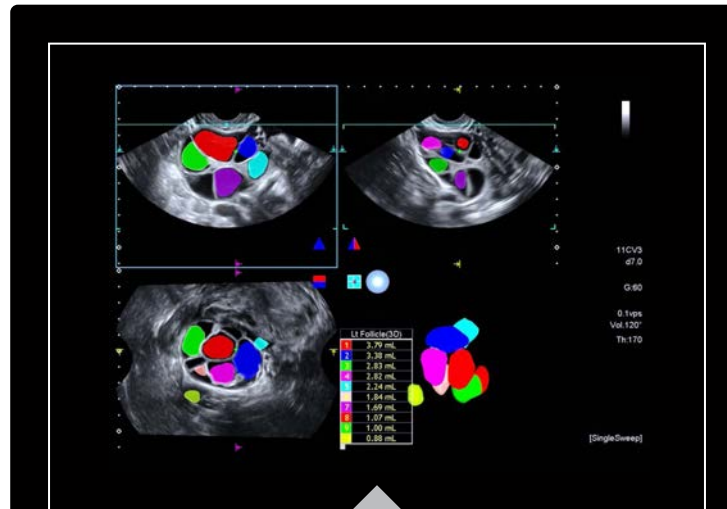


Intelligent healthcare made easy

Aplio a-series provides a range of flexible, productivity functions enabling you to optimize system operation to match your specific requirements with a programmable, context-sensitive user interface, automated measurements, smart functions and adjustable workflow protocols.

Contrast Exam Protocols

Contrast exam protocols can assist in streamlining the CEUS exam, with the potential to assist with correct timing and imaging transitions as well as proscribed lab-specific workflows.

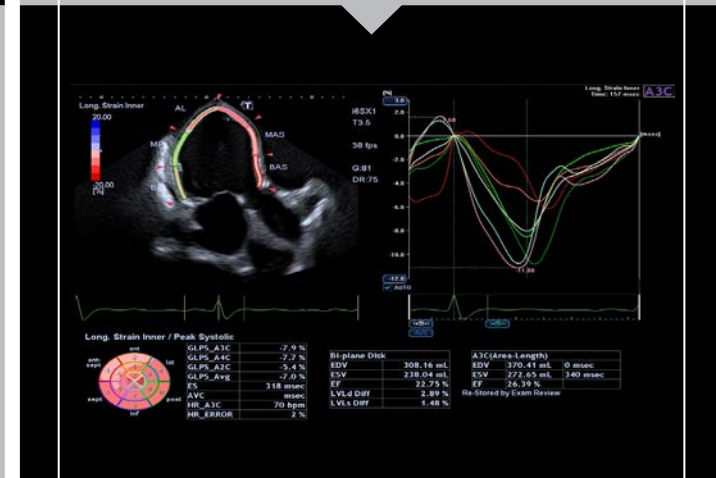
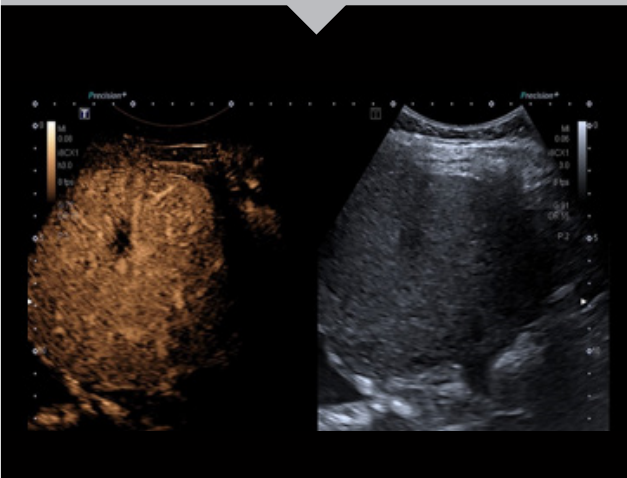


Automating Measurements

The automated contour tracing powered by AI helps you improve your workflow consistency and efficiency simply at the touch of a button.

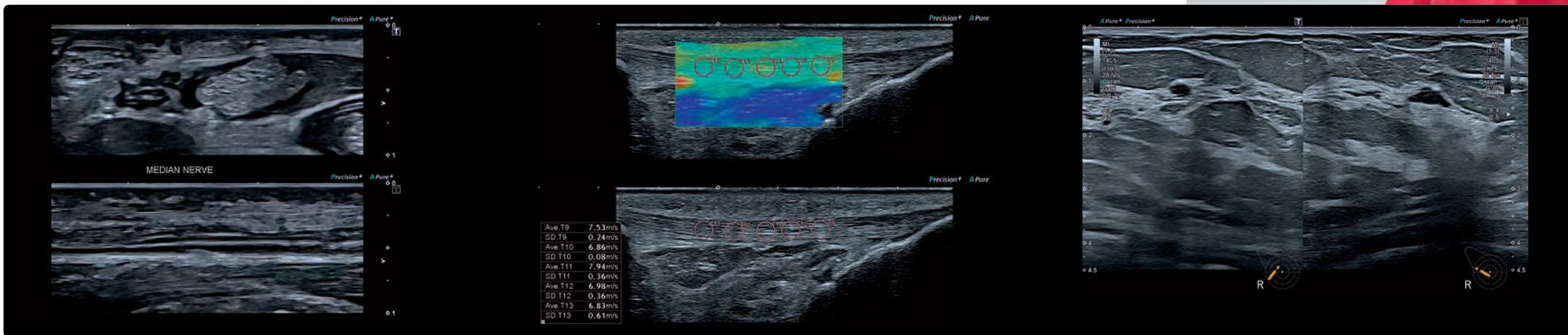
Automated Follicle Count

The systems' automated follicle count software largely benefits from the high image quality, allowing for fast and easy determination of the number and size of the follicles.



Amazing detail, outstanding versatility

A wide range of standard and specialized high-frequency wideband transducers provide superb detail and definition in the near field for a wide range of examinations. Advanced imaging tools allow you to provide deeper, more confident clinical insights.



The outstanding resolution of Canon's high frequency transducers can help identify fine details such as layered structures and small lesions.

Many of Aplio's advanced visualization and quantification tools such as Shear Wave Elastography with optionally extended detection range are also available for specialized examinations.

Reporting of the ultrasound examination is increasingly important. The fully automated display of the transducer position with Smart Body Mark can make this task easier and faster.



Wideband Hockeystick
Linear 17LH7



Wide-View
Linear 14L5



Matrix
Linear 18LX7*



*Available on a550



Exceptional detail for a confident diagnosis

Both the busy clinician and the patient can benefit from high-resolution 2D imaging and volumetric ultrasound. Aplio delivers excellent imaging, even in difficult-to-scan, high BMI patients.



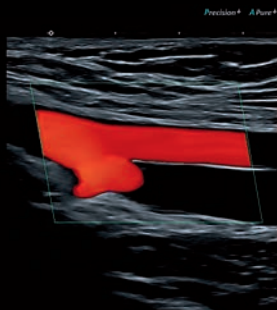
Doppler Luminance offers a homogeneous, easy-to-interpret color display with high frame rate and richness of detail, even in extremely small vessels.



Luminance offers natural-looking 3D renderings of high quality and definition, providing strong visual feedback from the image's depth and detail.

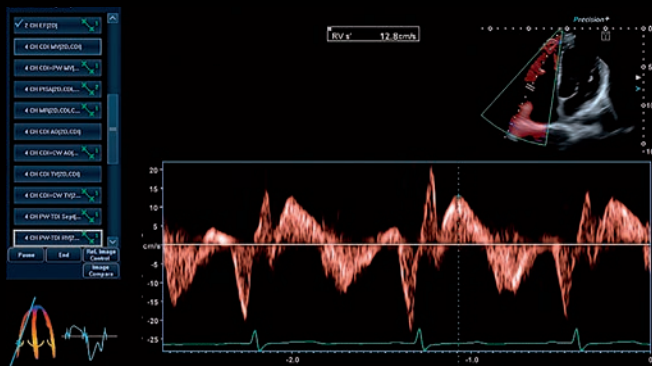
Confident cardiovascular quantification, regional myocardial function

Functional assessment is at the heart of cardiovascular imaging. By providing valuable additional information in easy-to-understand visual, parametric or quantitative formats, Aplio's advanced clinical functions can help you get your diagnostic answer quickly and reliably.

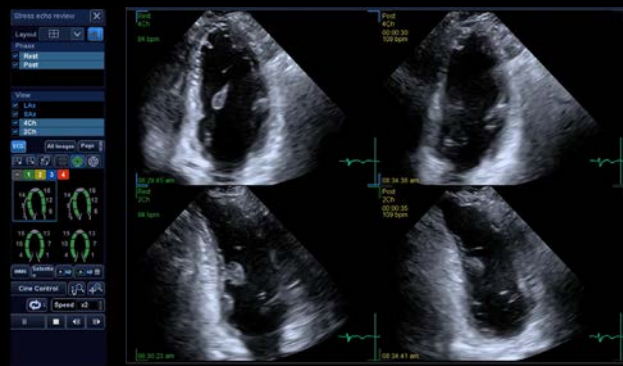


Aplio's Protocol Assistant navigates you through your workflow with a clear, easy-to-read menu. While ensuring that exams are done consistently, it also provides flexibility to step in and out as needed.

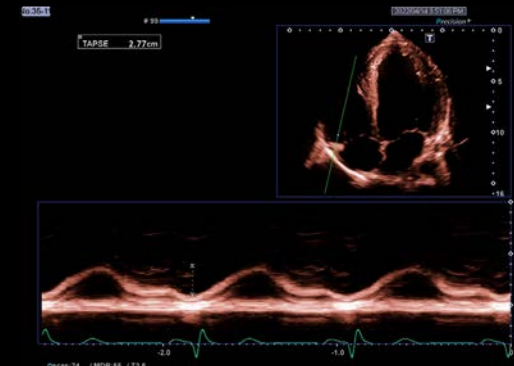
powered by Altiivity



Aplo provides clear Tissue Doppler images and pulsed wave traces for confident assessment of myocardial function in both visual and quantitative formats.



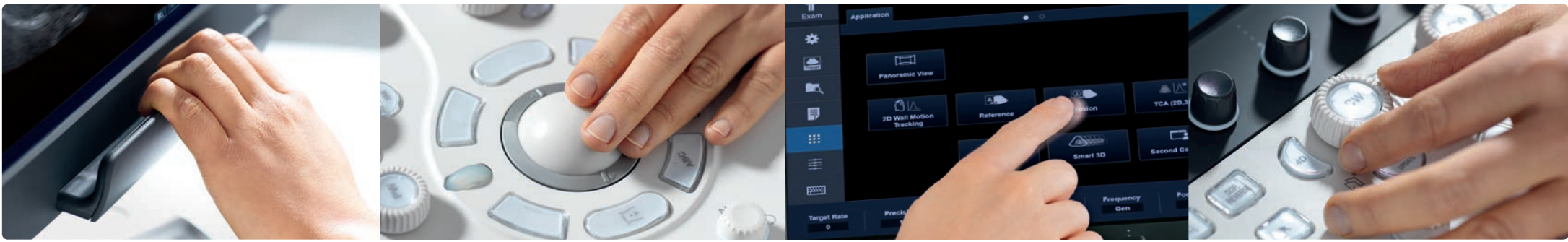
Supporting standard and user-defined protocols for both physical and pharmacological stress, Aplo offers a comprehensive package for fast and confident wall motion assessment.



TAPSE done with Flex M and Raw Data

Aplio's comprehensive workflow report functions can help you ensure consistent reproducible documentation for every examination.





Make your work flow with ergonomics that excel

Aplio a-series is designed to make your imaging task simple and quick while allowing you to scan in a comfortable, patient-engaging position. The system provides a host of intelligent workflow support and automation tools, helping you to achieve rapid results with consistent high quality for a variety of patient conditions.



Optimal ergonomics and mobility

Small and light, *Aplio a-series* is easy to maneuver and simple to set up in an ergonomically sound position for any scanning situation.

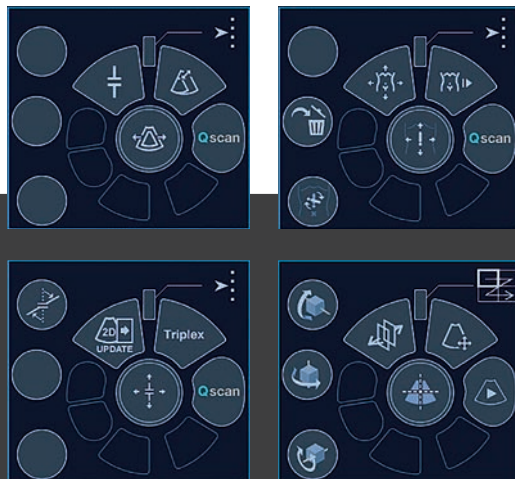
Large 23" monitor with fully articulating arm and handgrip

Concise panel with 36 cm height adjustment range

Comfortable handles on both sides for easy transport and positioning

Backlit transducer connectors and convenient footrest

Easy-roll casters with steer mode to aid system relocation



Aplio's context-sensitive user interface is designed to make your imaging task simpler and quicker.

Collaborate and communicate

Aplio a-series is a multipurpose solution with consistently high-quality imaging, streamlined workflow and expert tools for a very wide range of clinical specialties. The systems offer a wealth of functions allowing you to connect to your network, to collaborate with experts, and to communicate directly with colleagues or Canon specialists.



Aplio connects seamlessly into hospital networks providing a full-spectrum solution that helps you manage patients and exams more efficiently while embracing standardized data formats.



With dedicated imaging and navigation tools, *Aplio a-series* is perfectly suited to enhance clinical confidence in complex, multi-disciplinary interventions.



For smaller hospitals or practices without an extensive hospital network, Aplio also offers the option of connecting to a local NAS* in order to store and share all data securely.



As a true multipurpose solution, Aplio allows you to work hand in hand with peers from other clinical specialties and to share findings with ease.





Remote connection

Need expert advice? Or want to share some findings with peers? With Canon's optional ApliGate solution you can view securely – right from your workplace.



Cloud services

The system's integrated Tricefy* option gives you direct access to cloud-based communication and image management, so you can instantly share images and reports with referring physicians or patients.



Remote support

Connecting Aplio with Canon's InnerVision remote support is simple, secure and provides you with a wealth of benefits that you'll be able to enjoy directly at your system.



*Tricefy requires an additional third-party subscription and may not be available in all regions.

Aplio a-series

Follow us: <https://us.medical.canon>



@CanonMedicalUS



Canon Medical Systems USA, Inc.



+CanonMedicalUS

Canon

CANON MEDICAL SYSTEMS USA, INC.

<https://us.medical.canon>

2441 Michelle Drive, Tustin CA 92780 | 800.421.1968

©Canon Medical Systems, USA 2022. All rights reserved.

Design and specifications are subject to change without notice.

Altivity, Aplio, ApliGate, ApliPure and Made for Life are trademarks of Canon Medical Systems Corporation. Tricefy is a trademark of Trice Imaging, Inc. YouTube logo is a trademark of Google Inc. TWITTER, TWEET, RETWEET and the Twitter logo are trademarks of Twitter, Inc. or its affiliates. LinkedIn, the LinkedIn logo, the IN logo and InMail are registered trademarks or trademarks of LinkedIn Corporation and its affiliates in the United States and/or other countries. Canon Medical Systems Corporation meets internationally recognized standards for Quality Management System ISO 9001, ISO 13485. Canon Medical Systems Corporation meets the Environmental Management System standard ISO 14001.

Disclaimer: Some features presented in this brochure may not be commercially available on all systems shown or may require the purchase of additional options. Please contact your local Canon Medical Systems representative for details.

ULCS14176US

Made For life