

Magnetic Resonance



Each minute costs the brain **1.9 million neurons**.

Fast, detailed, intelligent brain imaging and diagnostics are needed for **stroke assessment and triage** to improve patient outcomes.

Confident and Capable Stroke Management

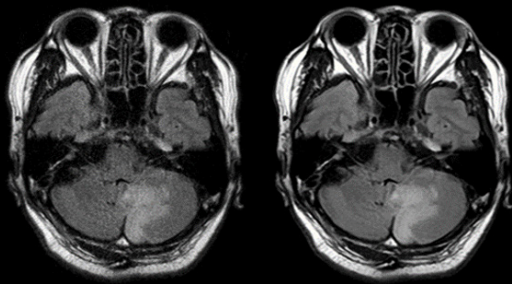
“With DLR we can achieve both high resolution images without losing time or signal, and reduce the image acquisition time.”¹



— *Professor Vincent Dousset*
Head of the diagnostic and therapeutic
Neuro Radiology department at
Bordeaux University Hospital

Intelligent MR technology and imaging applications for efficient stroke care planning

Artificial Intelligence for MR²

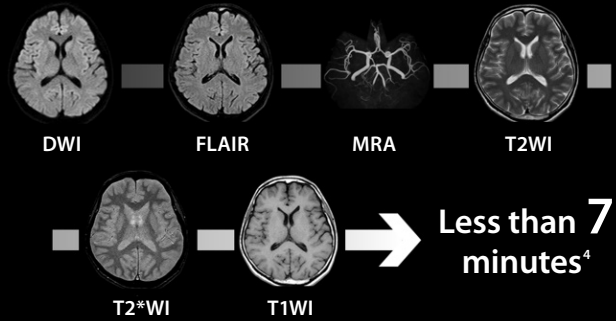


Original



- Advanced Intelligent Clear-IQ (AiCE) fully integrates Deep Learning Reconstruction (DLR) technology utilizing Convolutional Neural Networks for MR
- AiCE provides sharp, clear and higher SNR images³

SURE^{Brain}

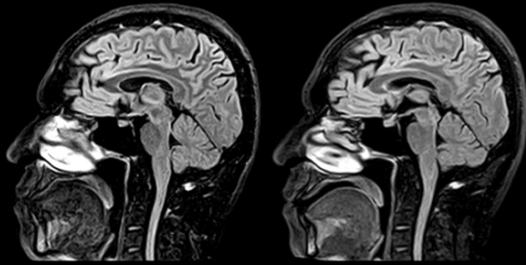


- PURERF and Saturn technologies are designed to increase SNR by up to 20% for 3T and 38% for 1.5T⁵, allowing for faster sampling and higher resolution; combined with the ability to automatically stack protocol sequences with NeuroLine+² results in quick neuro exams

Compressed SPEEDER²

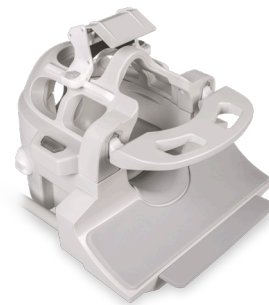
10:15 Scan Time

3:55 Scan Time⁴



- Imaging technique that can accelerate scan times utilizing compressed sensing technology
- Enables high-speed imaging and reduced scan acquisition times

Atlas SPEEDER Head/Neck coil²



- Coils designed to provide high-resolution images and optimize patient comfort

¹ The clinical results, performance and views described are the experience of the clinicians. Results may vary due to clinical setting, patient presentation and other factors

² Optional

³ AiCE provides higher SNR compared to typical low pass filters

⁴ Actual scan times vary by case

⁵ The SNR increase depends on the application and patient conditions

Follow us: <https://us.medical.canon>



@CanonMedicalUS



Canon Medical Systems USA, Inc.



+CanonMedicalUS

CANON MEDICAL SYSTEMS USA, INC.

<https://us.medical.canon> | 2441 Michelle Drive, Tustin CA 92780 | 800.421.1968

©Canon Medical Systems, USA 2023. All rights reserved. Design and specifications subject to change without notice.

Vantage Fortian and Made for Life are trademarks of Canon Medical Systems Corporation. YouTube logo is a trademark of Google Inc.

TWITTER, TWEET, RETWEET and the Twitter logo are trademarks of Twitter, Inc. or its affiliates. LinkedIn, the LinkedIn logo, the IN logo

and InMail are registered trademarks or trademarks of LinkedIn Corporation and its affiliates in the United States and/or other countries.

NeurologyCSS14112US

Made For life