

Computed Tomography



Each minute costs the brain **1.9 million neurons**.¹

Fast, detailed, intelligent brain imaging and diagnostics are needed for **stroke assessment and triage** to improve patient outcomes.

Confident and Capable Stroke Management

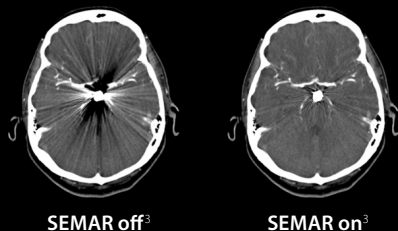
"AiCE image quality is superior to all other reconstruction technologies I have seen so far. The noise is greatly reduced, and the images have a natural texture appearance."²



— *Professor Mathias Prokop MD, PhD*
Chairman of the Department of
Radiology & Nuclear Medicine
Radboud University Medical Center,
Nijmegen, the Netherlands

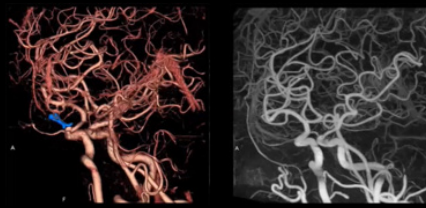
Intelligent CT technology and imaging applications for efficient stroke care planning

SEMAR (Single Energy Metal Artifact Reduction)



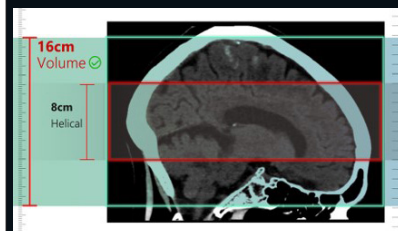
- Automated metal artifact reduction
- Improving visualization of implants and the adjacent soft tissues
- No dose penalty

SURE⁴ Subtraction



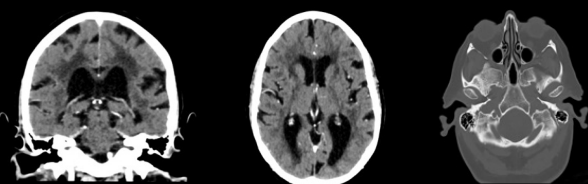
- Automated bone subtraction and iodine mapping
- SURE⁴ Subtraction angiography automatically removes bone, calcium and stents
- Zero-click workflow that automatically generates subtracted images quickly

Whole-Organ detector coverage⁵



- Up to 16 cm coverage
- Ideal for brain perfusion imaging
- Able to cover entire brain with single rotation

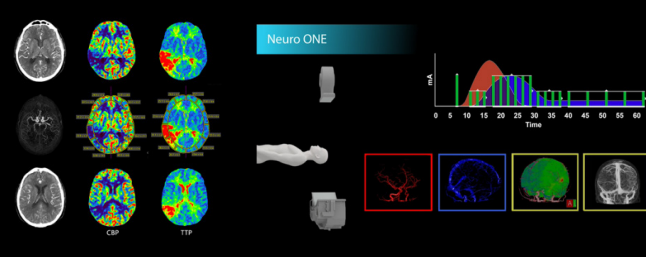
Artificial Intelligence for CT⁴



CT Head using AiCE DLR for improved low contrast detectability in stroke work-up⁶

- Advanced Intelligent Clear-IQ (AiCE) fully integrates Deep Learning Reconstruction (DLR) technology with sharp, clear, and distinct images, at low dose
- AiCE supports improved image quality and dose reduction

Volumetric brain perfusion with Neuro ONE Protocol⁷



- 16 cm coverage, volumetric scanning
- Whole brain perfusion and dynamic CTA
- Less than 5 minutes from start of scan to review of data
- Entire study can be acquired in 60 seconds
- Automatic processing applications provide perfusion maps and CT DSA information to your network in under 5 minutes

¹ Source: CDC, NCHS. Underlying Cause of Death 1999-2013 on CDC WONDER Online Database, released 2015

² The clinical results, performance and views described are the experience of the clinicians. Results may vary due to clinical setting, patient presentation and other factors

³ Effective Dose – 0.88 mSv – AAPM Report 96, k-factor 0.0021

⁴ Optional

⁵ Available on Aquilion ONE

⁶ Effective Dose – 2.0 (2) mSv – AAPM Report 96, k-factor 0.0021

⁷ Optional on Aquilion ONE

Follow us: <https://us.medical.canon>



@CanonMedicalUS



Canon Medical Systems USA, Inc.



+CanonMedicalUS

CANON MEDICAL SYSTEMS USA, INC.

<https://us.medical.canon> | 2441 Michelle Drive, Tustin CA 92780 | 800.421.1968

©Canon Medical Systems, USA 2023. All rights reserved. Design and specifications subject to change without notice.

Aquilion ONE and Made for Life are trademarks of Canon Medical Systems Corporation. YouTube logo is a trademark of Google Inc.

TWITTER, TWEET, RETWEET and the Twitter logo are trademarks of Twitter, Inc. or its affiliates. LinkedIn, the LinkedIn logo, the IN logo

and InMail are registered trademarks or trademarks of LinkedIn Corporation and its affiliates in the United States and/or other countries.

CTCSS14178US

Made For life