



Standardizing capabilities/offerings/technology across their radiology department was listed as a top priority in a survey.<sup>1</sup>

With most standard of care technologies being optional, this is the challenge.

## **Making Standard of Care, Standard in Radiology**

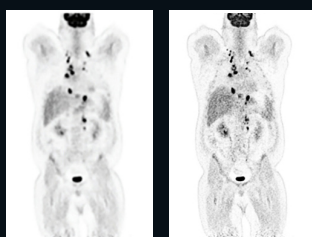
"Canon's Time-of-Flight technology has improved our image quality and our overall system performance. We see smaller lesions even with faster exams. The improvements are particularly noticeable with our larger patients."<sup>2</sup>

— Mark L. Winkler, MD  
Steinberg Diagnostic Medical Imaging  
Las Vegas, Nevada



# Canon makes features and technologies for treating patients standard, not optional

## Time-of-Flight (ToF)

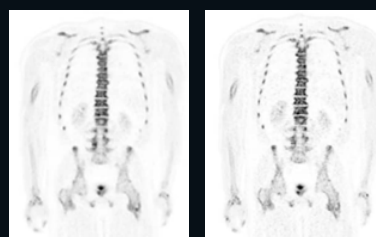


On

Off

- Can be used to improve image quality, optimize injected dose<sup>3</sup> and improve scan times as compared to exams without ToF

## Point Spread Function (PSF)<sup>4</sup>

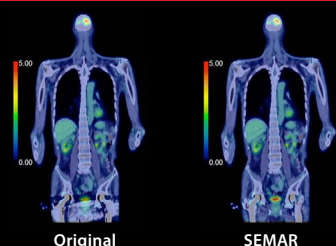


On

Off

- Delivers high image quality and high quantitative performance with improved uniformity across the field of view

## SEMAR (Single Energy Metal Artifact Reduction)



Original

SEMAR

- Automated metal artifact reduction
- Improving visualization of implants and the adjacent soft tissues
- No dose penalty

## Dose management features



- AIDR 3D – Iterative noise reduction tool to help lower dose
- SURE Exposure – Dose modulation tool for personalized dose management
- SUREkV – Provides for an automatic kV selection based on the patient size and the target image quality level

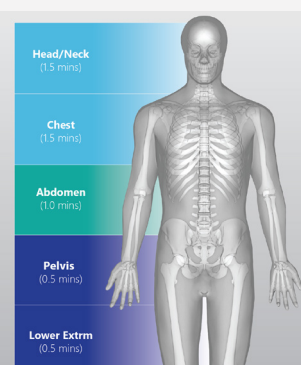
## Axial field of view



With a large axial field of view, Canon PET/CT can deliver on the ability to provide faster scans that translate to a more comfortable experience for patients

- 27 cm – Cartesion Prime
- 19.6 cm – Celesteion

## Variable Bed Time (vBT)



- Variable Bed Time allows for more customized CT and PET protocols with up to 4 different unique phases
- Ability to adjust scan times and acquisition mode per bed positions for optimal results

## Extended table/Scannable range



- Long 2000 mm CT and PET scanning range that allows single head to toe acquisition

<sup>1</sup>Source: IMV 2019 Global Imaging Market Outlook Report

<sup>2</sup>The clinical results, performance and views described are the experience of the clinicians. Results may vary due to clinical setting, patient presentation and other factors

<sup>3</sup>Optimization of injected dose is only recommended within the dosing ranges that appear in approved drug labeling

<sup>4</sup>Optional on Celesteion

Follow us: <https://us.medical.canon>



@CanonMedicalUS



Canon Medical Systems USA, Inc.



+CanonMedicalUS

CANON MEDICAL SYSTEMS USA, INC.

<https://us.medical.canon> | 2441 Michelle Drive, Tustin CA 92780 | 800.421.1968

©Canon Medical Systems, USA 2022. All rights reserved. Design and specifications subject to change without notice.

Made for Life is a trademark of Canon Medical Systems Corporation.

RadiologyCSS14091US

*Made For life*