



Standardizing capabilities/offerings/technology across their radiology department was listed as a top priority in a recent survey.¹

With most standard of care technologies being optional, this is the challenge.

Making CT Standard of Care, Standard in Radiology

“SEMAR protocols and SEMAR software is very easy to use. It’s just a simple click on the scanner and the machine does all of the work for you. With SEMAR we get more data around metal so there is more diagnostics, and more information gathered to make a better diagnosis for the patient and prognosis of the outcome.”²



— **Grant Mooney**
Lead CT Technologist
Memorial University Medical Center

Canon makes features and technologies for treating patients standard, not optional

SEMAR (Single Energy Metal Artifact Reduction)



- Automated metal artifact reduction
- Improving visualization of implants and the adjacent soft tissues
- No dose penalty

Enhanced table features



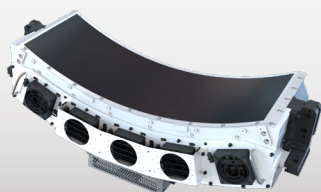
- 660+ lbs. table capacity and low 33 cm table height facilitates easy access for larger patients
- Extended table with 2,000 mm scan range that allows single head to toe acquisition
- Comfortable 47 cm table width

Dose management features



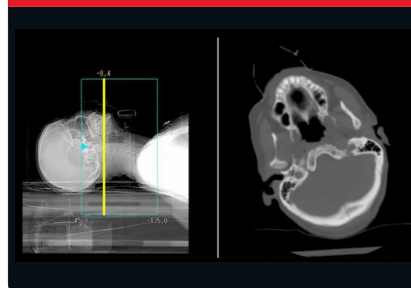
- AIDR 3D – Iterative noise reduction tool to help lower dose
- SURE^{EX}posure – Dose modulation tool for personalized dose management
- SURE^{kV} – Provides for an automatic kV selection based on the patient size and the target image quality level

PUREVISION Detector



- Advanced detector technology available across entire CT portfolio
- 40% better light output for improved image quality, especially at low doses
- 0.5 mm slice resolution

Insta-View



- Provides real-time imaging during the scan
- Monitor the scan results instantly to save scan time

+/- 30° Gantry Tilt



- Highly advanced reconstruction technology overcomes the mathematical complexity of angled scanning for helical and volumetric acquisition, with no compromise in image quality

¹Source: IMV 2019 Global Imaging Market Outlook Report

²The clinical results, performance and views described are the experience of the clinicians. Results may vary due to clinical setting, patient presentation and other factors

Follow us: <https://us.medical.canon>



@CanonMedicalUS



Canon Medical Systems USA, Inc.



+CanonMedicalUS

CANON MEDICAL SYSTEMS USA, INC.

<https://us.medical.canon> | 2441 Michelle Drive, Tustin CA 92780 | 800.421.1968

©Canon Medical Systems, USA 2022. All rights reserved. Design and specifications subject to change without notice.
Made for Life is a trademark of Canon Medical Systems Corporation.

RadiologyCSS14102US

Made For life