



Keeping imaging departments up-to-date with state-of-the-art technology was listed as a top priority in a survey.¹

However, innovation is not always easily accessible.

Making Innovation Accessible in Radiology

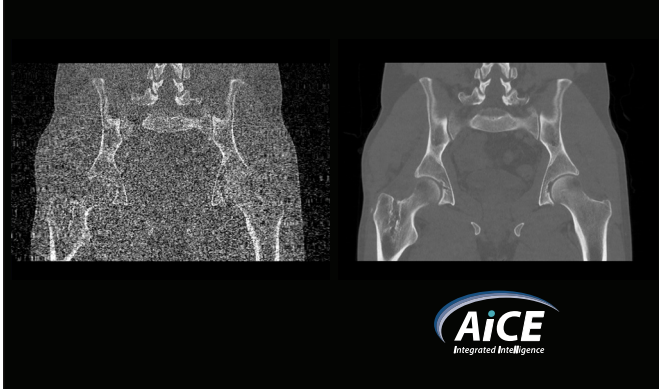
“When it comes to implementation of new reconstruction techniques, it all has to do with the acceptance of the images by the radiologists. With AiCE we switched it on...and accepted it for most applications immediately.”²



— *Professor Mathias Prokop MD, PhD
Chairman of the Department of
Radiology & Nuclear Medicine
Radboud University Medical Center,
Nijmegen, the Netherlands*

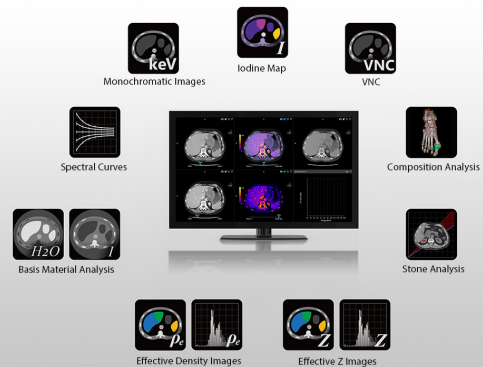
Providing advanced technologies and workflow solutions

Artificial Intelligence for CT³



- Advanced Intelligent Clear-IQ (AiCE) fully integrates Deep Learning Reconstruction (DLR) technology with sharp, clear, and distinct images, at low dose
- AiCE supports improved image quality and dose reduction

Deep Learning Spectral Technology⁴



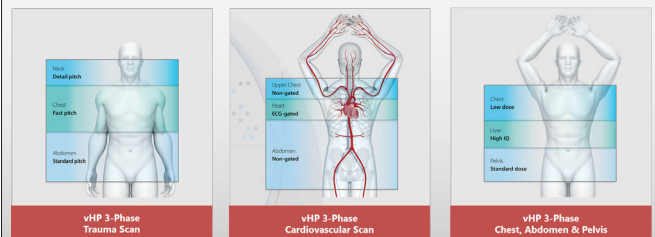
- Deep Learning Spectral reconstruction for excellent energy separation and low-noise properties
- Fully integrated end-to-end workflow is easy to use and can be conveniently incorporated into your protocols

SURESubtraction³



- Automated bone subtraction and iodine mapping
- SURESubtraction angiography automatically removes bone, calcium and stents
- Iodine mapping helps to visualize local perfusion differences

vHP 3-Phase (Variable Helical Pitch)³



- Allows three scans to be performed in a single acquisition, seamlessly transitioning between scan parameters optimized for each body region
- Has potential for less contrast media and radiation dose

¹Source: IMV 2019 Global Imaging Market Outlook Report

²The clinical results, performance and views described are the experience of the clinicians. Results may vary due to clinical setting, patient presentation and other factors

³Optional

⁴Available on Aquilion ONE/PRISM and GENESIS Edition

Follow us: <https://us.medical.canon>



@CanonMedicalUS



Canon Medical Systems USA, Inc.



+CanonMedicalUS

CANON MEDICAL SYSTEMS USA, INC.

<https://us.medical.canon> | 2441 Michelle Drive, Tustin CA 92780 | 800.421.1968

©Canon Medical Systems, USA 2022. All rights reserved. Design and specifications subject to change without notice.

Made for Life is a trademark of Canon Medical Systems Corporation.

RadiologyCSS14100US

Made For life