



The healthcare industry faces a staffing crisis, from patient-facing roles to technical positions.

47% of healthcare workers plan to leave the field by 2025.¹

Work Smarter

"Thanks to AiCE and Compressed SPEEDER, all **examination times** are **shorter**, which not only improves patient comfort, but also results in **less motion artifacts** and rescans."²



— *Tommi Jauhiainen*
Radiologist and CEO
Helsingin Magneettikuvaus,
Helsinki, Finland

Innovation to boost productivity without compromise

Auto Scan Assist³

SUREVOI Knee and KneeLine+



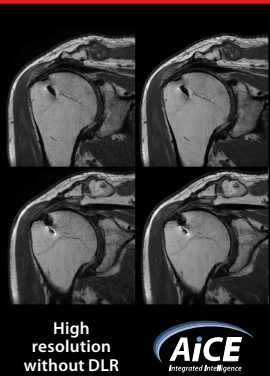
- Supports accurate alignment of the knee to isocenter enabling you to reduce related re-scans
- SUREVOI Knee and KneeLine+ improve reproducibility and image quality by supporting the alignment and centering of the knee to the magnet isocenter and the positioning of the exam's standard planes automatically

SpineLine+



- Automatic detection of intervertebral disc spaces
- Sagittal and coronal locators allow capability to set double-oblique slices for enhanced reproducibility of follow-up exams
- W-SpineLine+ provides positioning assist functions for whole spine scans

Artificial Intelligence for MR³



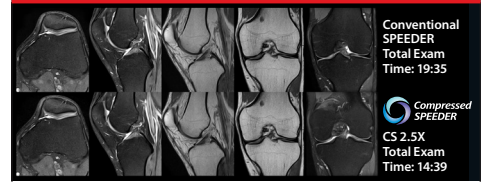
- AiCE (Advanced intelligent Clear-IQ Engine) intelligently removes noise from images which results in higher signal-to-noise ratio (SNR)⁴
- Integrated into normal MR scan workflow and automatically sent to PACS

ForeSee View



- Real-time preview of the current scan plan to ensure alignments are planned correctly
- Useful in difficult to plan anatomy such as certain orthopedic joints

Compressed SPEEDER



- Decrease exam times in 2D and 3D sequences⁵
- Increase speed for shorter exams or Increase resolution and signal-to-noise ratio with same scan time

Ceiling Camera/Intelligent Monitor³



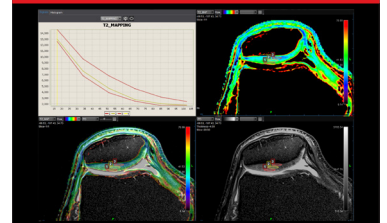
- Ceiling camera solution assists patient positioning, confirms coil set-up, and displays key information on the Intelligent Gantry Monitor

Dockable Table³



- Enhances workflow
- Provides easy patient handling allowing medical staff to respond to virtually any patient need quickly and easily

MR Ortho Expert Software^{3,6}



- Dedicated, advanced processing tools for orthopedic imaging
- Quantitative assessment of cartilage integrity

¹ Medical Device News Magazine, a division of PTM Healthcare Marketing. (2022, September 21). 3 ways to address healthcare staffing shortages and improve retention: By Kristi McDermott, president of clinical engineering, TRIMEDX. Medical Device News Magazine.

<https://infomednews.com/3-ways-to-address-healthcare-staffing-shortages-and-improve-retention-by-kristi-mcdermott-president-of-clinical-engineering-trimedx/>

² The clinical results, performance and views described are the experience of the clinicians. Results may vary due to clinical setting, patient presentation and other factors

³ Optional

⁴ AiCE provides higher SNR compared to typical low pass filters

⁵ Actual scan time reductions vary by case

⁶ Designed and manufactured by Olea Medical (requires Vitrea Advanced Visualization)

Follow us: <https://us.medical.canon>



@CanonMedicalUS



Canon Medical Systems USA, Inc.



+CanonMedicalUS

CANON MEDICAL SYSTEMS USA, INC.

<https://us.medical.canon> | 2441 Michelle Drive, Tustin CA 92780 | 800.421.1968

©Canon Medical Systems, USA 2022. All rights reserved. Design and specifications subject to change without notice.

Made for Life is a trademark of Canon Medical Systems Corporation.

MRCSS14294US

Made For life