

TOSHIBA

Leading Innovation >>>

Vantage TitanTM 3T

iS Edition





Toshiba's Intelligent Solutions enhance clinical performance

Sophisticated

The combination of new Super Slim Gradient design and advanced clinical applications of M-Power™ V3.5 provides a truly sophisticated clinical solution.

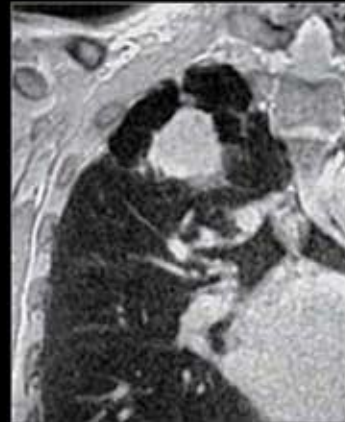
Streamlined

A full suite of advanced M-Power functionalities maximizes the system productivity.

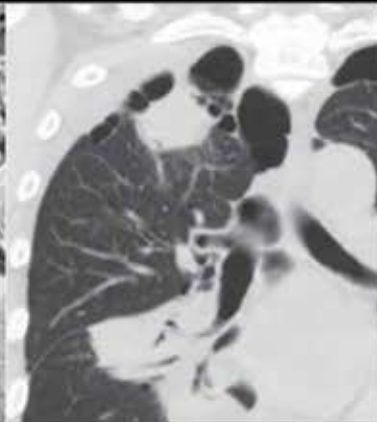
Secure Network

Toshiba is the first manufacturer to receive CT, MR and VL system Authorization To Operate (ATO) with the U.S. Air Force.

Advanced Clinical Solutions



UTE

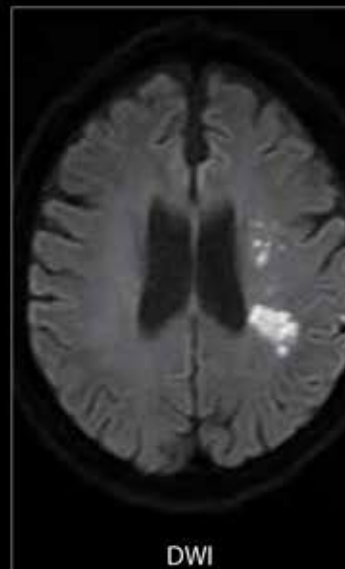


Thin section CT

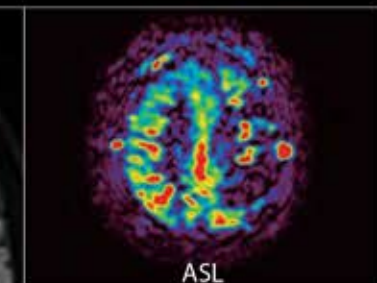
UTE (Ultrashort TE)

UTE acquires data in a radial pattern from the center of the k-space, immediately after the RF excitation pulse is applied. It enables the depiction of tissues with very short $T2^*$ values, such as the lung.

Image courtesy of Kobe University Hospital (Japan)



DWI



ASL



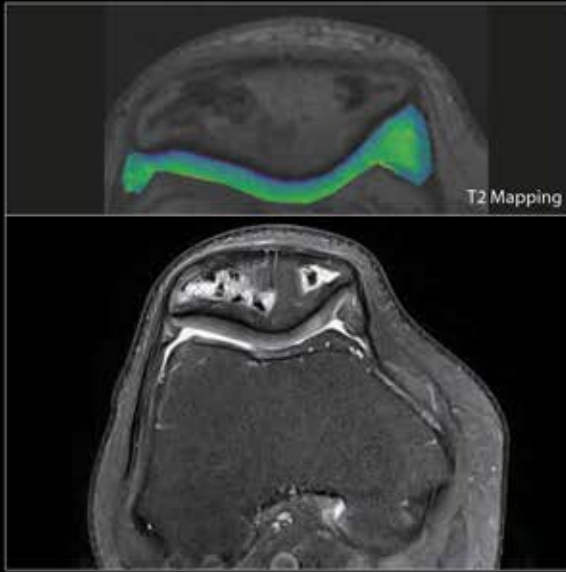
MRA

DWI

Thanks to the combination of advanced gradient hardware quality and sequence optimization, images can be acquired with high diffusion and high spatial resolution across all anatomies.

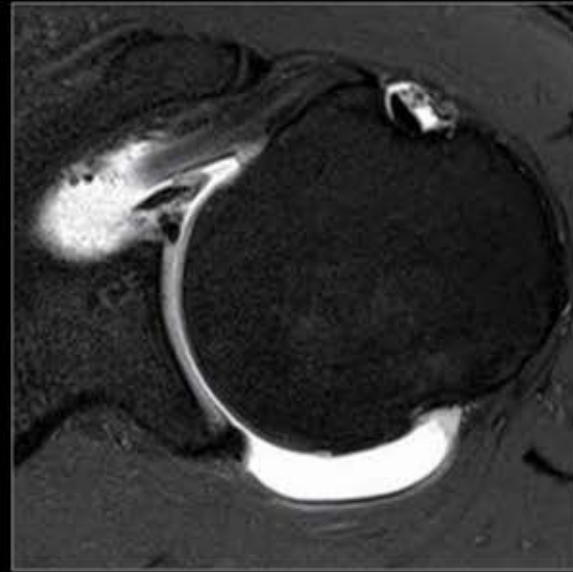
Image courtesy of Fujita Health University Hospital (Japan)

The Vantage Titan 3T provides a complete suite of routine and advanced clinical solutions, including head-to-toe 2D and 3D morphological imaging with high contrast-to-noise ratio and high spatial resolution.



High-resolution MSK solution

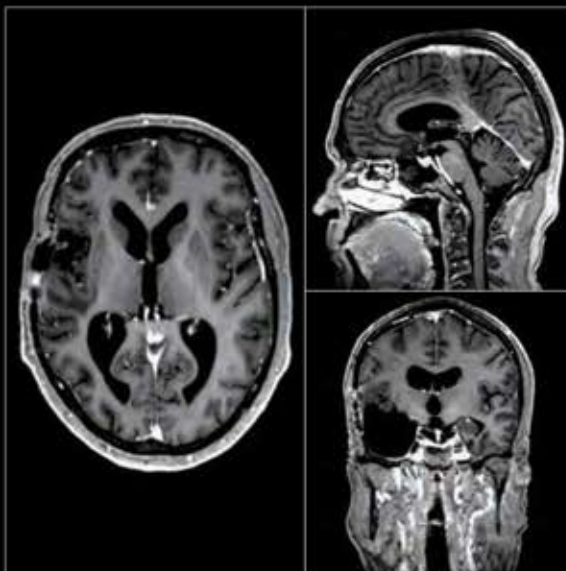
With the combination of advanced coil suites, Vantage Titan 3T provides high-resolution images. Moreover, advanced post-processing can be utilized.



Off-center imaging

The high magnetic field homogeneity of Vantage Titan 3T allows uniform fat saturation for off-center imaging applications such as the shoulder or the elbow.

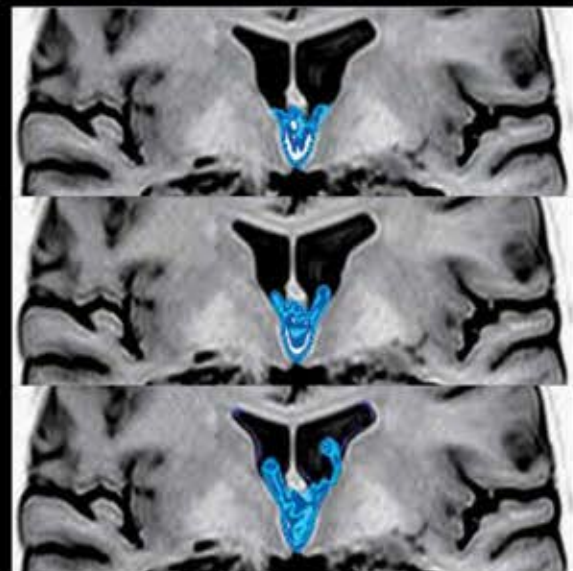
Image courtesy of Clinica Creu Blanca (Spain)



MP RAGE

Inversion recovery prepared FFE3D sequence with variable shot interval (recovery time) setting can provide high resolution images with T1-weighted contrast.

Image courtesy of VU University Medical Center (Netherlands)



Non-contrast CSF Dynamics Imaging

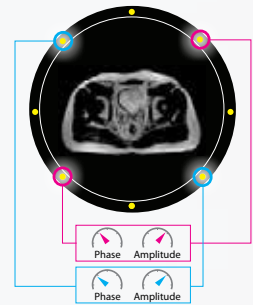
CSF dynamics can be imaged by selectively labeling the flow with RF pulses. It allows clinicians to capture CSF flow in natural state.

Vantage Titan 3T iS Edition

Outstanding Image quality

Toshiba's unique technologies permit high-image quality

Toshiba implemented advanced Multi-phase Transmission technology that permits optimal RF distribution and homogeneity in all body regions, including abdomen and cardiac scans. Moreover, the newly designed Saturn Gradient coil provides enhanced image quality.



Safety

Toshiba achieves true non-contrast MRA for the entire body

Toshiba's advanced non-contrast MRA method enables vascular imaging without the use of contrast injection, enabling you to minimize patient risks.



Patient comfort

Large 71cm patient aperture and Pianissimo™



Pianissimo

Toshiba's advanced noise reduction technology, Pianissimo, significantly reduces the noise for all types of sequences. The 71cm aperture, Open-Bore technology, minimizes patient anxiety, ensuring a comfortable examination environment for all patients.



Ease of Use

Easy to use, Easy to learn

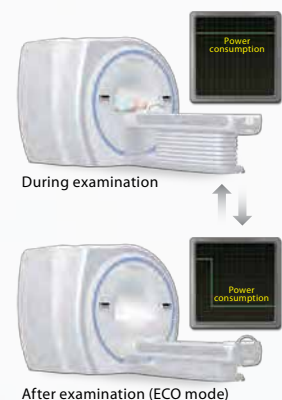
Our M-Power intuitive user interface allows an efficient workflow, provides advanced post processing software and is built for all levels of users, empowering you to do more. M-Power is a common software platform to our entire MR product line.



Eco Mode

Reducing system power consumption

The Vantage Titan 3T utilizes a zero Helium boil-off magnet. Moreover, the total power consumption may be reduced using the Eco Mode. This is where certain electronic components go into stand-by to reduce power consumption, but scan mode can be resumed in less than one second.





Vantage Titan 3T iS Edition

Magnet	3T High Field Homogeneity Magnet (Zero Helium Boil-off)
Patient Aperture	71 cm
Active Shield Gradient Coil	Super Slim Gradient ¹⁾
Gradient Strength	30 mT/m (Standard Gradient) 45 mT/m (Saturn Gradient)
Noise Reduction Technology	Pianissimo ²⁾
Non-contrast MRA Technology	Time-SLIP ³⁾ , FBI, FSBB, V-Trace, ASL and more advanced technologies
User Interface	M-Power V3.5
Operation system	Windows®7
Security Solution	<ul style="list-style-type: none"> Utilizing Whitelist-based security software ⁴⁾ Meets the requirements of Risk Management Framework (RMF), governed by the Defense Health Agency (DHA) ⁵⁾
Energy Saving Technology	

1) Super Slim Gradient : Advanced Active Shielded Gradient Coil providing high-quality images.

2) Pianissimo : Noise reduction technology collaborating with Super Slim Gradient.

3) Time-SLIP : Non-contrast MRA technique enabling to acquire images of hemodynamics for selected Vessels.

4) Whitelist-based security software : Running only programs required for MRI operations to ensure stable operation of the MRI system.

5) The system has received Approval To Operate (ATO) from the United States Air Force.

6) Eco Mode : Function to turn off a part of the system to reduce the power consumption, which can be switched to scan mode within less than 1 second.

*Some functions are options.

TOSHIBA MEDICAL SYSTEMS CORPORATION

<http://www.toshibamedicalsystems.com>

©Toshiba Medical Systems Corporation 2016. All rights reserved.

Design and specifications subject to change without notice.

MCAMR0116EA 2015-10 TMSC/D

MRBR12470US

Toshiba Medical Systems Corporation meets internationally recognized standards for Quality Management System ISO 9001, ISO 13485.

Toshiba Medical Systems Corporation Nasu Operations meets the Environmental Management System standard ISO 14001.

Vantage Titan, Pianissimo, and M-Power are trademarks of Toshiba Medical Systems Corporation.

Windows is a registered trademark of Microsoft Corporation in the United States and other countries.