



Accelerate Throughput with CardioLine

Designed for Vantage Titan™ 1.5T and 3T and Vantage Elan™ MR

CardioLine, Canon Medical Systems' cardiac slice alignment software, automatically detects anatomical landmarks for accurate and reproducible positioning of the standard views recommended by SCMR*. The software flexibility allows alignment of cardiac planes to be manually adjusted by the technologist or fully automated, reducing multi-operator variability and standardizing the MR cardiac exam. CardioLine shortens exam duration by reducing the number of positioning steps and breath holds, improving workflow efficiency and the overall patient experience.

*Society for Cardiovascular Magnetic Resonance (SCMR).

CARDIOLINE: AUTOMATIC SCAN POSITIONING CARDIAC SOFTWARE

General

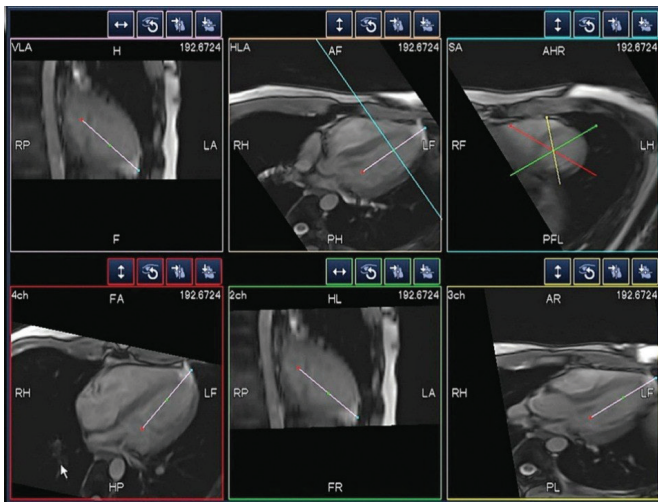
- Reduction in overall scan time allows for superb patient experience
- Fully automated MR cardiac positioning tool
- One-click automatic alignment using a single stack of axial images
- Software flexibility allows for full automation or manual alignment by the technologist

Compatible Systems

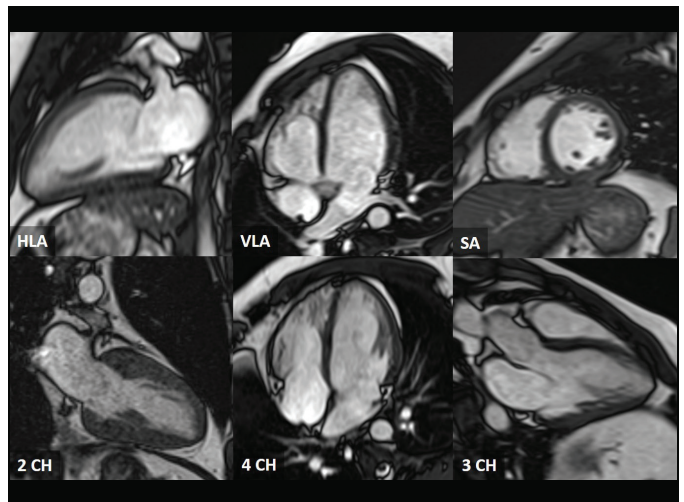
- Vantage Titan 3T with M-Power V2.21 or later
- Vantage Titan 1.5T with M-Power V2.10 or later
- Vantage Elan with M-Power V3.0 or later

System Requirements

Optional mCardiac Package must be installed on the system.



Six standard SCMR cardiac views automatically aligned by CardioLine.



Images acquired using CardioLine. **HLA:** Horizontal Long Axis View. **VLA:** Vertical Long Axis View. **SA:** Short Axis View. **2 CH:** 2 Chamber View. **4 CH:** 4 Chamber View. **3 CH:** 3 Chamber View.

Follow us: <https://us.medical.canon>



@CanonMedicalUS



+CanonMedicalUS



Canon Medical Systems USA, Inc.



+CanonMedicalUS

Canon

CANON MEDICAL SYSTEMS USA, INC.

<https://us.medical.canon>

2441 Michelle Drive, Tustin CA 92780 | 800.421.1968

©Canon Medical Systems, USA 2018. All rights reserved.
Design and specifications subject to change without notice.

Vantage Titan, Vantage Elan and Made for Life are trademarks of Canon Medical Systems Corporation. Other company and product names appearing in this document may be trademarks or registered trademarks of their perspective holders. Google+ logo and YouTube logo are trademarks of Google Inc. TWITTER, TWEET, RETWEET and the Twitter logo are trademarks of Twitter, Inc. or its affiliates. LinkedIn, the LinkedIn logo, the IN logo and InMail are registered trademarks or trademarks of LinkedIn Corporation and its affiliates in the United States and/or other countries.

MRCSS12801US MOIMR0103EB

Made For life