

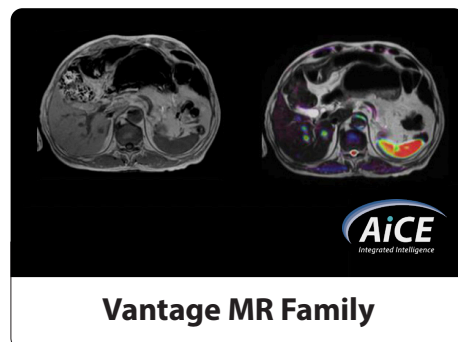
What you can't **see**,
you can't **diagnose**.

- Low quality images
- Image artifacts
- Attenuation
- Patient motion
- Limited field-of-view

Advanced Acquisition for Medical Oncology

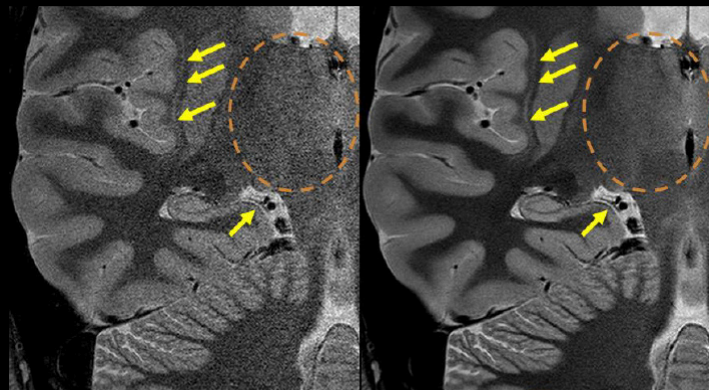
"With AiCE, we can easily address the two most pressing clinical needs of our time: superb image quality with ultra-high matrices acquired within routine scan times or abbreviated scan times with traditional resolution."¹

— Dr. Gold, MD
Clinical Radiologist and Researcher



Intelligent data-driven technology focused on image quality and advanced visualization.

Advanced intelligent Clear-IQ Engine (AiCE)²

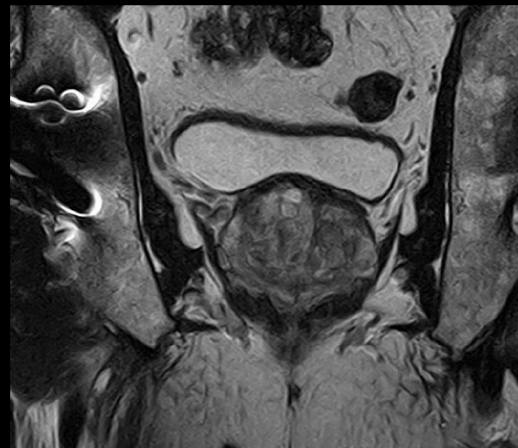


Without AiCE DLR



- AI to enhance signal detectability
- Intelligently removes noise
- Results in increased SNR³
- Enhanced resolution
- Enhanced anatomical detail

Metal Artifact Reduction (mART/mART+)²



Prostate with metal hip

- Metal artifact reduction
- Robust performance, built into scan protocol or can be used retrospectively in raw data
- Standard advanced clinical applications

Reproducible Positioning



- Auto alignment workflow driven applications with EasyTech
- Patient positioning and coil set-up with Ceiling Camera⁴ and Intelligent Monitor

¹The clinical results, performance and views described are the experience of the clinicians. Results may vary due to clinical setting, patient presentation and other factors

²Optional

³AiCE provides higher SNR compared to typical low pass filters

⁴Available on the Fortian

Follow us: <https://us.medical.canon>



@CanonMedicalUS



Canon Medical Systems USA, Inc.



+CanonMedicalUS

CANON MEDICAL SYSTEMS USA, INC.

<https://us.medical.canon> | 2441 Michelle Drive, Tustin CA 92780 | 800.421.1968

©Canon Medical Systems, USA 2022. All rights reserved. Design and specifications subject to change without notice.

Made for Life is a trademark of Canon Medical Systems Corporation.

OncologyCSS14080US

Made For life