

What you can't **see**,
you can't **diagnose**.

- Low quality images
- Not enough counts/dose
- Image artifacts
- Attenuation
- Patient motion
- Limited field-of-view

Advanced Acquisition for Medical Oncology

"Major game changer."¹

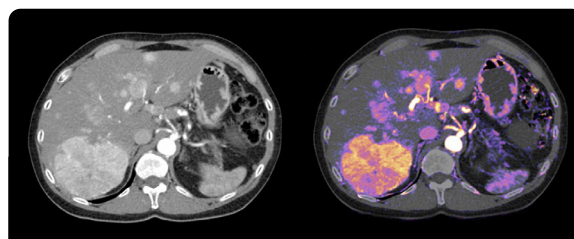
— *Eliot Siegel, MD, University of Maryland,
School of Medicine*

"Let's use for every patient."¹

— *Mickaël Ohana, MD, PhD,
Strasbourg University, France*

"Confidence goes up."¹

— *Mathias Prokop, MD, PhD,
Radboudumc, The Netherlands*



Sharp, clear and distinct images.
At low dose.



Intelligent data-driven technology focused on image quality and advanced visualization.

Advanced intelligent Clear-IQ Engine (AiCE)², is trained using vast amounts of high-quality image data and features a deep learning neural network that can reduce noise and boost signal.

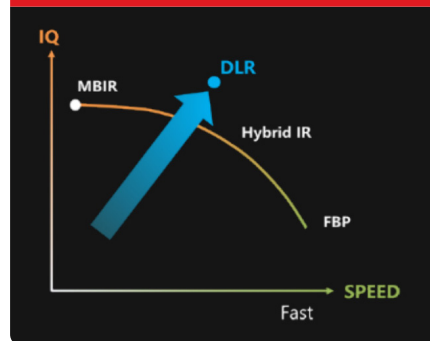
Our best low-contrast resolution, ever³



Dose neutral industry-leading ultra-high resolution⁴

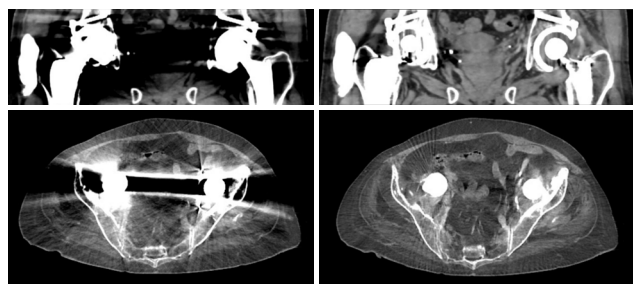


Seamless integration with Image appearance and fast reconstruction⁵



See more with Single Energy Metal Artifact Reduction (SEMAR)

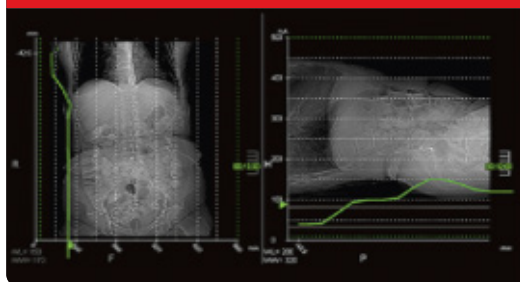
- Automated metal artifact reduction
- Robust performance
- Built into scan protocol or can be used retrospectively in raw data
- Standard advanced clinical application



Original

Single Energy Metal Artifact Reduction (SEMAR)

Dose Management Features



- AIDR 3D – Iterative noise reduction tool to help lower dose
- ^{SURE}Exposure – Dose modulation tool for personalized dose management
- ^{SURE}kV – Provides for an automatic kV selection based on the patient size and the target image quality level

¹The clinical results, performance and views described are the experience of the clinicians. Results may vary due to clinical setting, patient presentation and other factors

²Optional

³1.5mm @ 0.3%, 22.6 mGy for Genesis. 1.5mm@ 0.3%, 21.8 mGy for Prime SP

⁴Aquilion Precision, Dose neutral between Ultra-high resolution mode with AiCE and normal resolution mode with hybrid iterative reconstruction

⁵As compared to MBIR

Follow us: <https://us.medical.canon>



@CanonMedicalUS



Canon Medical Systems USA, Inc.



+CanonMedicalUS

CANON MEDICAL SYSTEMS USA, INC.

<https://us.medical.canon> | 2441 Michelle Drive, Tustin CA 92780 | 800.421.1968

©Canon Medical Systems, USA 2022. All rights reserved. Design and specifications subject to change without notice.

Made for Life is a trademark of Canon Medical Systems Corporation.

OncologyCSS14078US

Made For life