



± 50% of interventionalists report spine complaints.

Spine problems limit work in 25-33% of reporting interventionalists.¹

Improved Operator Experience for Interventional Radiology

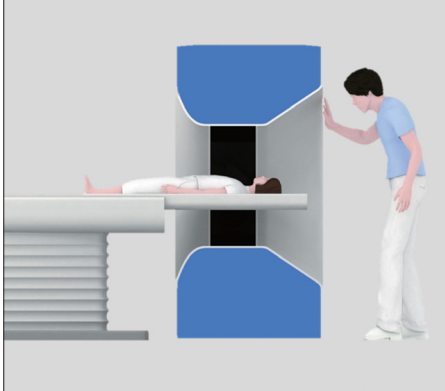
“The **hybrid touch panel** and the **larger bore**, really the whole setup and configuration of it, makes me **more efficient as an interventionalist**.”²

— *Nathan Danielson*
DO, Diagnostic Radiologist
St. Cloud Hospital, St. Cloud, MN



Enhance your care experience

Intelligent gantry design



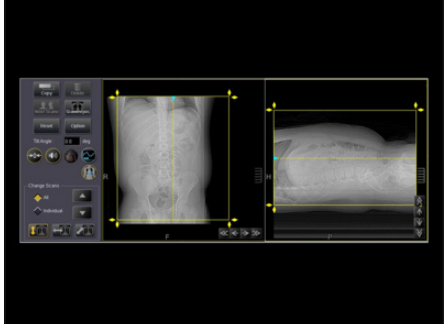
- Flared gantry on front and rear for improved access to patients
- Wide 78cm bore designed to focus on comfort during the scan process

Enhanced table design



- Table can lower to 33cm from floor for easy patient loading for all age groups and the physically challenged
- Wide 47 cm table with flat tabletop for easier patient transfer

SUREPosition



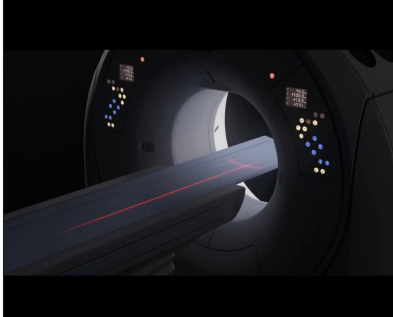
- Accurately position the patient up-down and right-left from the control room³
- Never repeat a scanogram with a new (virtual system) generated scanogram after repositioning
- Always perform iso-center scanning to optimize image quality

Tech Assist Lateral Slide⁴



- Mechanically move the table right or left, up to 42 mm for the Aquilion Lightning, Prime SP, ONE/GENESIS Edition and ONE/PRISM Edition and up to 85mm for the Aquilion Exceed LB, to the correct position with the push of a button
- Improves safety and comfort
- Helps reduce the risk of injury to the operator

Area Finder/ Laser Collimation⁴



- Laser collimation allows the field of view and scan range set directly at tableside
- Examinations are performed faster

Hybrid CT touch panel for CT guided interventions⁴



- One-handed operation with ergonomically designed controls and a versatile touchscreen tablet
- Allows the operator to remain bedside while they:
 - Control the table and gantry
 - Select scan mode and acquire images
 - Perform image review

¹J.L. Benjamin, Q.C. Meisinger; Ergonomics in the Development and Prevention of Musculoskeletal Injury in Interventional Radiologists. Tech Vasc Interventional Rad 21: 16-20, 2018

²The clinical results, performance and views described are the experience of the clinicians. Results may vary due to clinical setting, patient presentation and other factors

³Right-left centering requires Tech Assist Lateral slide option

⁴Optional

Follow us: <https://us.medical.canon>

 @CanonMedicalUS

 Canon Medical Systems USA, Inc.

 +CanonMedicalUS

CANON MEDICAL SYSTEMS USA, INC.

<https://us.medical.canon> | 2441 Michelle Drive, Tustin CA 92780 | 800.421.1968

©Canon Medical Systems, USA 2022. All rights reserved. Design and specifications subject to change without notice.
Made for Life is a trademark of Canon Medical Systems Corporation.

CTCSS14212US

Made For life