

Angiography

Interventional Oncology procedures have unique and evolving challenges that require real-time, high-quality images while maintaining low radiation doses.

Image Quality Enhanced for Your Intervention

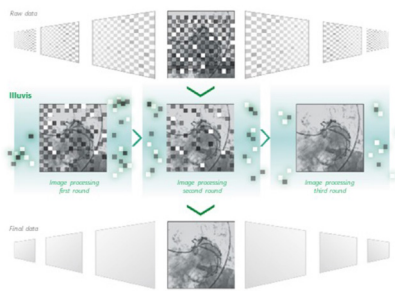
"I prefer to take the patient into the Canon Angio room because **image quality is just much superb.**"¹

— Bela Kis, MD, PhD, Diagnostic Imaging and Interventional Radiology, Moffitt Cancer Center, Tampa, FL



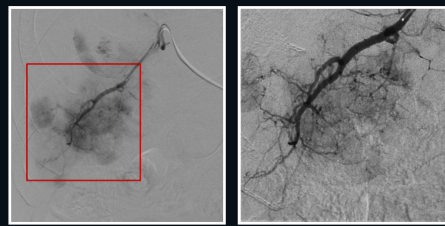
Image resolution for tomorrow's interventions

Optimize IQ with ImagingRite



- Advanced image processing:
 - Reduces background noise
 - Enhances features
- Analyzes and processes each frame in real-time

High Definition Detector²

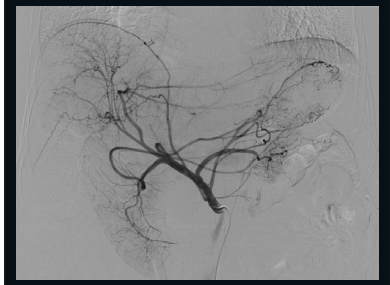


Standard FOV

True High Definition FOV

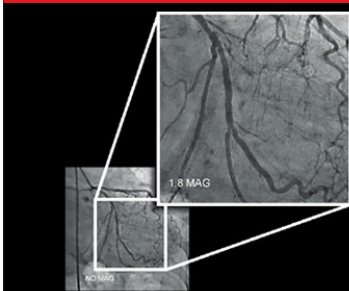
- 2 flat panel detectors combined into one:
- Industry standard pixel size, enabling the operator to provide high quality images at low dose
 - 76-micron pixel, with more than twice the spatial resolution of conventional flat panel detectors³

Real-time Auto Pixel Shift (RAPS)



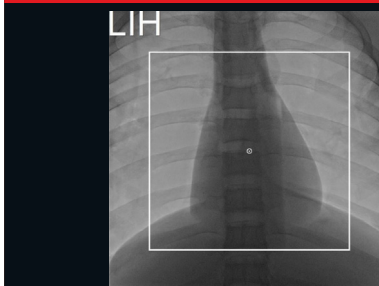
- Correct misalignment between the contrast image and mask image
- The correction result is applied automatically in real-time
 - No display latency

Live Zoom



- Offering potential dose savings compared to traditional field of view magnifications
- Digitally increase image size in real-time during fluoroscopy and acquisition

Virtual Position



- Reposition the region of interest with zero dose to the patient:
- Using a frame and "Bulls eye" displayed on the fluoroscopy image on the monitor
 - Without additional fluoroscopy

Fluoro Store



- Can reduce the need to perform a digital acquisition:
- Store up to 60 seconds of acquired fluoroscopy images, after fluoroscopy is completed

¹ The clinical results, performance and views described are the experience of the clinicians. Results may vary due to clinical setting, patient presentation and other factors

² Only optionally available on the Alphenix Core+ with 12"x12" & 12"x16" FPD, Alphenix Biplane with 12"x12" & 12"x16" FPD, Alphenix Sky+ with 12"x16" FPD, Alphenix 4D CT Sky+ Aquilion Prime SP with 12"x16" FPD, and Alphenix 4D CT Sky+ Aquilion ONE/GENESIS Edition with 12"x16" FPD.

³ Documented testing has demonstrated imaging capabilities with up to 2.5x greater resolution

Follow us: <https://us.medical.canon>



@CanonMedicalUS



Canon Medical Systems USA, Inc.



+CanonMedicalUS

CANON MEDICAL SYSTEMS USA, INC.

<https://us.medical.canon> | 2441 Michelle Drive, Tustin CA 92780 | 800.421.1968

©Canon Medical Systems, USA 2023. All rights reserved. Design and specifications subject to change without notice.

Aquilion ONE, Alphenix and Made for Life are trademarks of Canon Medical Systems Corporation. YouTube logo is a trademark of Google Inc. TWITTER, TWEET, RETWEET and the Twitter logo are trademarks of Twitter, Inc. or its affiliates. LinkedIn, the LinkedIn logo, the IN logo and InMail are registered trademarks or trademarks of LinkedIn Corporation and its affiliates in the United States and/or other countries.

OncologyCSS14064US

Made For life