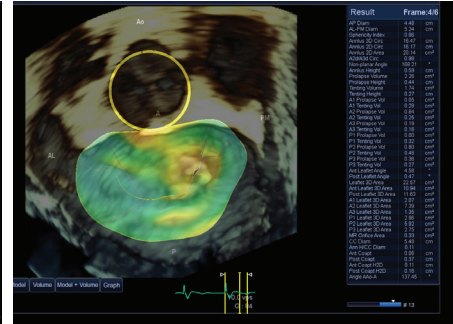
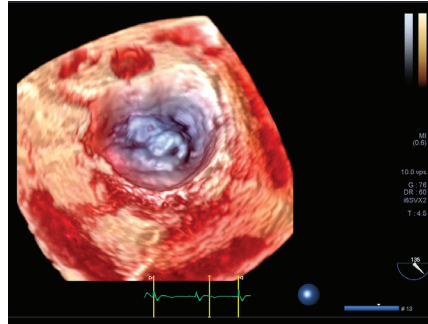
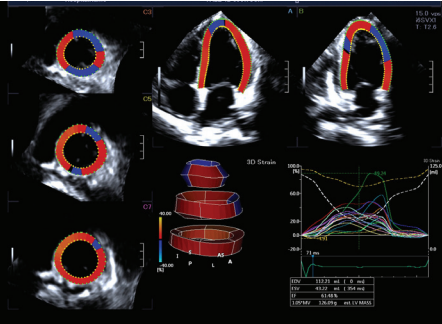


# Canon

## Time to Quantify

### Watch the Experts Get to the Heart of Workflow



# Time to Quantify

Join the Experts as They Show You Real-World Quantification Innovations with Workflow Ready for Your Daily Practice.

**Guest  
Professors:**



**Dr. Lissa Sugeng**

*Associate Professor of Medicine  
Yale School of Medicine  
Section Cardiovascular Medicine*



**Dr. Natesa G. Pandian**

*Cardiology Advisor  
Jeffrey M. Carlton Heart & Vascular Institute  
Professor of Medicine  
Tufts University School of Medicine*

## **Sunday, June 24th**

**9:30 a.m.** Dr. Pandian's "Workflow Innovation in 3D Speckle Tracking"

**2:45 p.m.** Dr. Sugeng's "Workflow Innovation in MV Quantification"

## **Monday, June 25th**

**9:30 a.m.** Dr. Sugeng's "Workflow Innovation in MV Quantification"

**2:45 p.m.** Dr. Pandian's "Workflow Innovation in 3D Speckle Tracking"

**Location:** Gaylord Opryland Resort and Convention Center, Nashville, TN

Follow us: <https://us.medical.canon>



@CanonMedicalUS #ASE2018



+CanonMedicalUS



Canon Medical Systems USA, Inc.



+CanonMedicalUS

©Canon Medical Systems, USA 2018. All rights reserved. Design and specifications subject to change without notice.

Aplo and Made for Life are trademarks of Canon Medical Systems Corporation. This document may include trademarks or registered trademarks of other companies.

ULCSS12977US