



“The practice domain of emergency radiology is wide, ranging from nonemergent to catastrophic and is ever widening as patients increasingly turn to the ED for both acute and chronic medical conditions.”¹

Solutions for Unique Imaging Situations

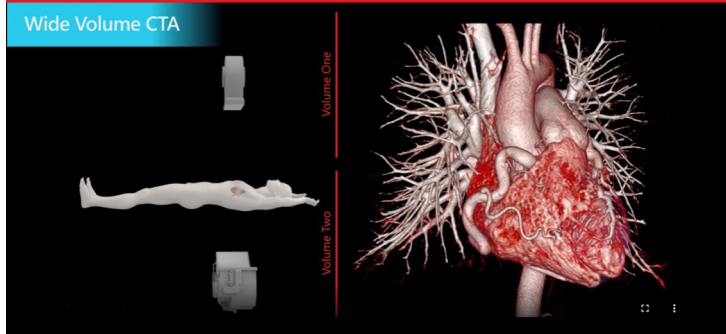
Emergency Department visits have been increasing 2% for the past 20 years, and imaging utilization in the ED has increased 15%.¹



Advanced technologies and applications for emergency radiology

SURE Cardio Wide Volume CTA²

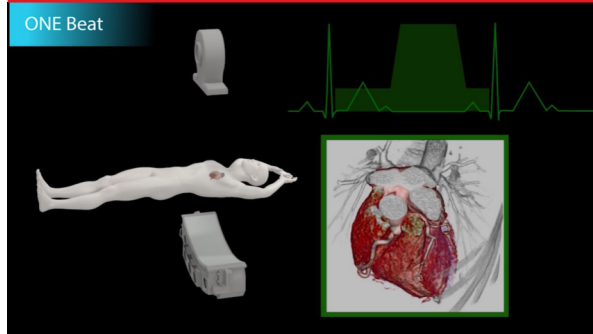
Wide Volume CTA



- Triage chest pain in minutes
- Allows for large anatomical areas to be covered quickly and to be reconstructed and reviewed in one image data set

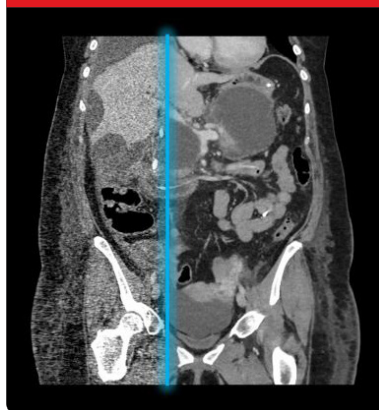
SURE Cardio ONE Beat²

ONE Beat



- Coronaries, wall motion, ejection fraction and functional analysis in ONE heartbeat

Artificial Intelligence for CT³



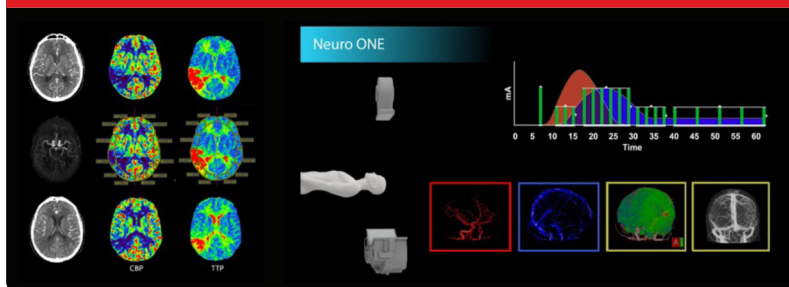
- Advanced Intelligent Clear-IQ (AiCE) fully integrates Deep Learning Reconstruction (DLR) technology with sharp, clear, and distinct images, at low dose
- AiCE supports improved image quality and dose reduction

SEMAR (Single Energy Metal Artifact Reduction)



- Automated prospective and retrospective metal artifact reduction
- Improving visualization of metal artifacts, implants and the adjacent soft tissues

Volumetric brain perfusion with Neuro ONE Protocol²



- 16 cm coverage, volumetric scanning
- Whole brain perfusion and dynamic CTA
- Entire study can be acquired in 60 seconds
- Automatic processing application provide perfusion maps and CT DSA information to your network in under 5 minutes

¹Chong, Suzanne & Robinson, Jeffrey & Davis, Melissa & Bruno, Michael & Reddy, Sravanthi & Pyatt, Robert & Friedberg, Eric. (2019). Emergency Radiology: Current Challenges and Preparing for Continued Growth. Journal of the American College of Radiology. 16. 10.1016/j.jacr.2019.03.009.

²Optional on Aquilion ONE/GENESIS Edition and Aquilion ONE/PRISM Edition

³Optional

Follow us: <https://us.medical.canon>



@CanonMedicalUS



Canon Medical Systems USA, Inc.



+CanonMedicalUS

CANON MEDICAL SYSTEMS USA, INC.

<https://us.medical.canon> | 2441 Michelle Drive, Tustin CA 92780 | 800.421.1968

©Canon Medical Systems, USA 2022. All rights reserved. Design and specifications subject to change without notice.

Made for Life is a trademark of Canon Medical Systems Corporation.

CTCSS14255US

Made For life