



“Developing rapid imaging scan setup and fast data acquisition technologies will be of main interest and concern in emergency radiology, which will significantly increase imaging capacity and reduce risk of delaying emergent patient management.”¹

Rapid Emergency Exam Setup

“In the ER, time can be both our greatest ally and our worst enemy. The first hour after trauma or the beginning of symptoms is considered the golden hour.”²



Imaging when and where you need it

Auto start feature from gantry



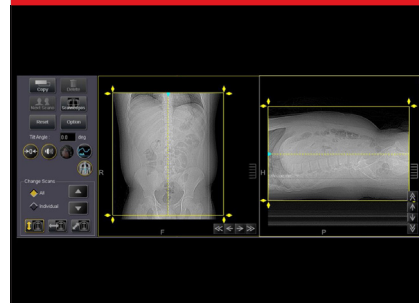
- Ability for user to initiate the scan directly from the gantry for time-sensitive exams
- Provides added patient access and patient safety

Tech Assist Lateral Slide³



- Mechanically move the table right or left, up to 42 mm, to the correct position with the push of a button
- Helps to reduce the risk of further injury and discomfort to trauma patients by reducing additional positioning

SUREPosition



- Accurately position the patient up-down and right-left from the control room⁴
- Helps to provide safer care and reduce rescans during trauma and time-critical procedures

Area finder/laser collimation⁵



- Laser collimation allows the field of view and scan range set directly on the gantry
- Examinations are performed faster
- Patients are positioned more comfortably

Patient centric design



- Flared gantry on front and rear for improved access to patients
- Wide 78 cm bore improves ability to view trauma patients and provides a calming environment for patients
- 47 cm wide table with 694 lbs. capacity lowers to 33 cm for easy patient loading

¹Shen D (2021) Grand Challenges in Radiology. Frontiers in Radiology.20 April 2021 1:615138

²www.altusemergency.com/the-importance-of-emergency-radiology/

³Optional

⁴Right-left centering requires Tech Assist Lateral Slide

⁵Available on Aquilion ONE/GENESIS Edition and Aquilion ONE/PRISM Edition

Follow us: <https://us.medical.canon>



@CanonMedicalUS



Canon Medical Systems USA, Inc.



+CanonMedicalUS

CANON MEDICAL SYSTEMS USA, INC.

<https://us.medical.canon> | 2441 Michelle Drive, Tustin CA 92780 | 800.421.1968

©Canon Medical Systems, USA 2022. All rights reserved. Design and specifications subject to change without notice.

Made for Life is a trademark of Canon Medical Systems Corporation.

CTCSS14254US

Made For life