

Ultrasound

"Choosing the correct imaging protocol, coordinating with technologist to expedite imaging, timely interpretation, and communication of urgent findings are key in Emergency Department imaging."¹

Acquisition Tools for Time-Sensitive Exams

"When our doctors can accurately diagnose a patient's condition in that first hour, patient survival rates go up, and the risk of long-term or permanent damage decreases."^{2,3}



Efficient and capable scanning for emergency departments

Clinical Presets and Quick Start Menus



- Adjust imaging parameters to a variety of specific clinical targets
- Reduce keystrokes and shorten exam time

Instant Image Optimization



- QuickScan automatically optimizes the image with a simple push of a button
- Achieve greater consistency in exams in less time

Wide Range of Emergency Clinical Capabilities



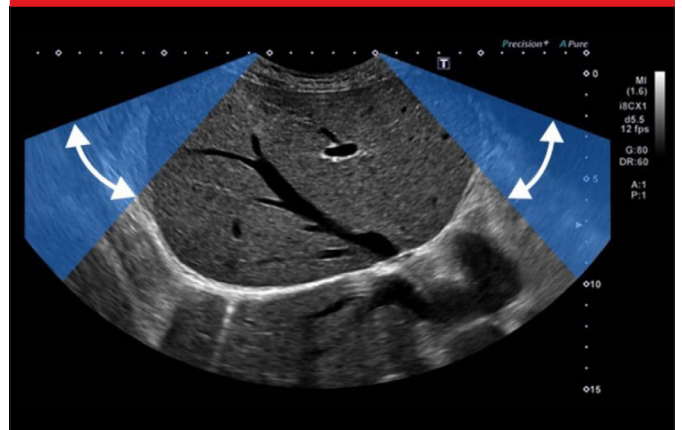
- Wide transducer clinical range provides versatility and superb image quality for emergency scanning
- Lightweight transducer design and ergonomic super-flexible cables for trauma settings

Wireless Operation⁴



- Wireless LAN for seamless connectivity to PACS directly from the exam location facilitates fast reporting

Increased Field of View⁵



- Technology increases field of view while maintaining excellent image quality
- See more of an organ on the same image, or visualizing a greater length for long structures such as blood vessels

¹ Li D, Basilio R, Blanco A, Calli C, Dick E, Kirkpatrick IDC, Nicolaou S, Patlas MN. Emergency Radiology: Evolution, Current Status, and Future Directions. Can Assoc Radiol J. 2022 Apr

² www.altusemergency.com/the-importance-of-emergency-radiology

³ The clinical results, performance and views described are the experience of the clinicians. Results may vary due to clinical setting, patient presentation and other factors

⁴ Optional

⁵ Ultra Wide View is available on Aplio i-series and a-series and is transducer dependent. 140° is only with Ultra Wide View with Aplio i-series/Prism Edition

Follow us: <https://us.medical.canon>



@CanonMedicalUS



Canon Medical Systems USA, Inc.



+CanonMedicalUS

CANON MEDICAL SYSTEMS USA, INC.

<https://us.medical.canon> | 2441 Michelle Drive, Tustin CA 92780 | 800.421.1968

©Canon Medical Systems, USA 2022. All rights reserved. Design and specifications subject to change without notice.

Made for Life is a trademark of Canon Medical Systems Corporation.

ULCSS14266US

Made For life