

"Choosing the correct imaging protocol, coordinating with technologist to expedite imaging, timely interpretation, and communication of urgent findings are key in Emergency Department imaging."<sup>1</sup>

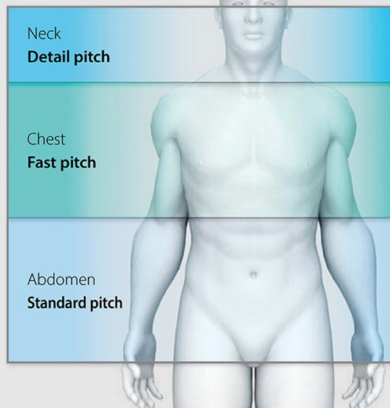
## Acquisition Tools for Time-Sensitive Exams

"When our doctors can accurately diagnose a patient's condition in that first hour, patient survival rates go up, and the risk of long-term or permanent damage decreases."<sup>2,3</sup>



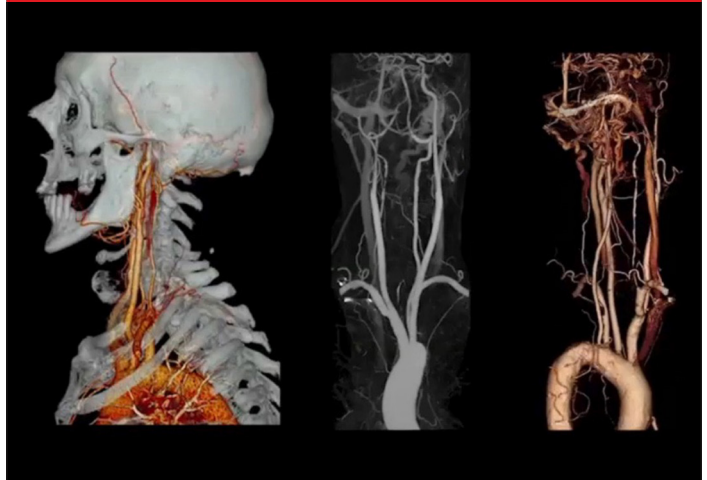
# Efficient and capable scanning for emergency departments

## vHP 3-Phase (Variable Helical Pitch) Trauma Scan<sup>4</sup>



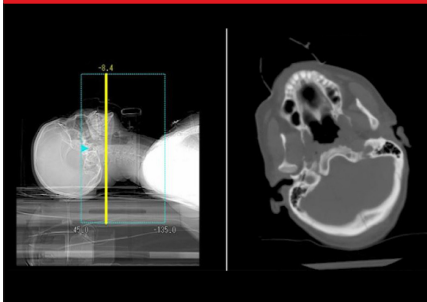
- Allows three scans to be performed in a single acquisition, seamlessly transitioning between scan parameters optimized for each body region
- vHP3 is integrated into the protocol and will automatically transfer images

## SURESubtraction<sup>4</sup>



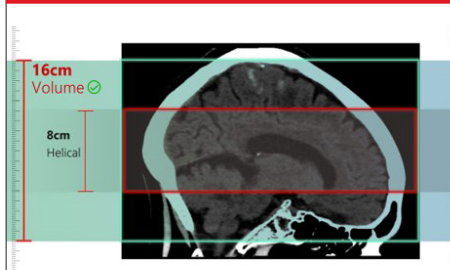
- Automated bone subtraction and iodine mapping
- SURESubtraction angiography automatically removes bone, calcium and stents
- Zero-click workflow that automatically generates subtracted images and transfers to PACS

## Insta-View



- Provides real-time imaging during the scan
- Monitor the scan results instantly to save scan time

## Whole-organ detector coverage<sup>5</sup>



- Up to 16 cm of coverage
- Able to cover entire organ with single rotation

## Extended table/scannable range



- Extended table with 2,000 mm scan range
- Allows single head to toe acquisition for trauma scans

<sup>1</sup>Li D, Basilio R, Blanco A, Calli C, Dick E, Kirkpatrick IDC, Nicolaou S, Patlas MN. Emergency Radiology: Evolution, Current Status, and Future Directions. Can Assoc Radiol J. 2022 Apr

<sup>2</sup>[www.altusemergency.com/the-importance-of-emergency-radiology](https://www.altusemergency.com/the-importance-of-emergency-radiology)

<sup>3</sup>The clinical results, performance and views described are the experience of the clinicians. Results may vary due to clinical setting, patient presentation and other factors

<sup>4</sup>Optional

<sup>5</sup>Available on Aquilion ONE/GENESIS Edition and Aquilion ONE/PRISM Edition

Follow us: <https://us.medical.canon>



@CanonMedicalUS



Canon Medical Systems USA, Inc.



+CanonMedicalUS

CANON MEDICAL SYSTEMS USA, INC.

<https://us.medical.canon> | 2441 Michelle Drive, Tustin CA 92780 | 800.421.1968

©Canon Medical Systems, USA 2022. All rights reserved. Design and specifications subject to change without notice.

Made for Life is a trademark of Canon Medical Systems Corporation.

CTCSS14256US

*Made For life*