

# Canon



## Sports Medicine

High-Definition  
Imaging for  
High Performance  
Athletics

Follow us: <https://us.medical.canon>  @CanonMedicalUS  Canon Medical Systems USA, Inc.  +CanonMedicalUS

## Canon

CANON MEDICAL SYSTEMS USA, INC.  
<https://us.medical.canon>

2441 Michelle Drive, Tustin CA 92780 | 800.421.1968

©Canon Medical Systems, USA 2021. All rights reserved.  
Design and specifications are subject to change without notice.

Aplio, ApliPure and Made for Life are trademarks of Canon Medical Systems Corporation. YouTube logo is a trademark of Google Inc. TWITTER, TWEET, RETWEET and the Twitter logo are trademarks of Twitter, Inc. or its affiliates. LinkedIn, the LinkedIn logo, the IN logo and InMail are registered trademarks or trademarks of LinkedIn Corporation and its affiliates in the United States and/or other countries. Lumason is a registered trademark of Bracco Diagnostics Inc. Canon Medical Systems Corporation meets internationally recognized standards for Quality Management System ISO 9001, ISO 13485. Canon Medical Systems Corporation meets the Environmental Management System standard ISO 14001.

Disclaimer: Some features presented in this brochure may not be commercially available on all systems shown or may require the purchase of additional options. Please contact your local Canon Medical Systems representative for details.

CORPBR13722US

*Made For life*



High-performance athletes need to stay at the top of their game. Canon Medical is proud to provide high-definition, advanced diagnostic imaging systems that unlock the maximum levels of athletic potential.

Whether helping prevent, diagnose, or treat injuries, Canon's advanced imaging solutions empower elite athletes around the world to push the boundaries of human performance.

## Partners In Athletic Performance

Canon's history of collaboration and innovation extends to our groundbreaking work in sports medicine. To serve our sports medicine customers, we partner alongside global clinical and academic institutions to gain a deeper understanding of injury prevention and recovery management. These close relationships enable us to confidently develop solutions that enable athletes to stay in peak performance.

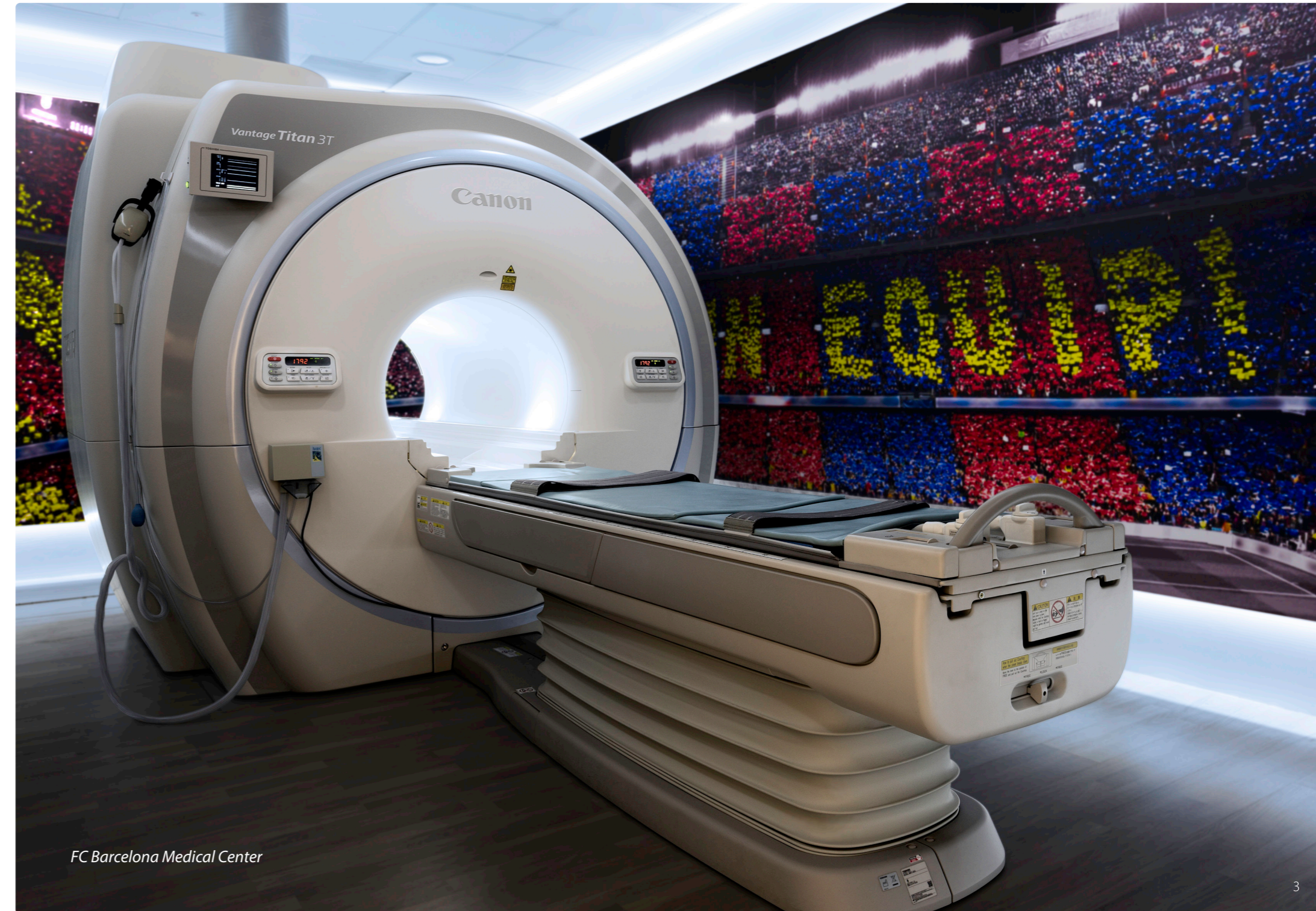
With strategic partnerships with the most revered sporting organizations in the world, such as the San Antonio Spurs, Manchester United Football Club and Real Madrid Club de Fútbol, elite athletic organizations trust Canon to guide them along every step of their athletic journey, from prevention to return-to-play — and everything in between.



OFFICIAL PARTNER OF FC BARCELONA



OFFICIAL MEDICAL SYSTEMS PARTNER OF MANCHESTER UNITED



FC Barcelona Medical Center



*“The ability to detect pre-symptomatic changes in the cartilage by quantitative T2 mapping may facilitate early implementation of preventative strategies, thereby prolonging athletic performance and long-term health of the joint beyond playing career.”*

— Dr. Steve McNally, Head of Football Medicine and Science,  
Manchester United, Manchester, United Kingdom



## Innovative Magnetic Resonance

Our MRI portfolio is grounded in leading-edge research and development, enabling clinicians to harness the latest and advanced high-resolution imaging technology to detect and help prevent potential injuries that can sideline an athlete.

- **AI Powered MR.** Deep Learning Reconstruction technology produces orthopedic imaging of bony detail and cartilage with higher signal-to-noise ratio and enhanced resolution.
- **T2 Cartilage Mapping.** Assists the physician in detecting early stages of cartilage lesions and degeneration within the knee.

## Intelligent Computed Tomography

An array of CT solutions based on the latest clinical research and innovative technological developments in Artificial Intelligence delivers a confident diagnosis that can lead to fast recovery.

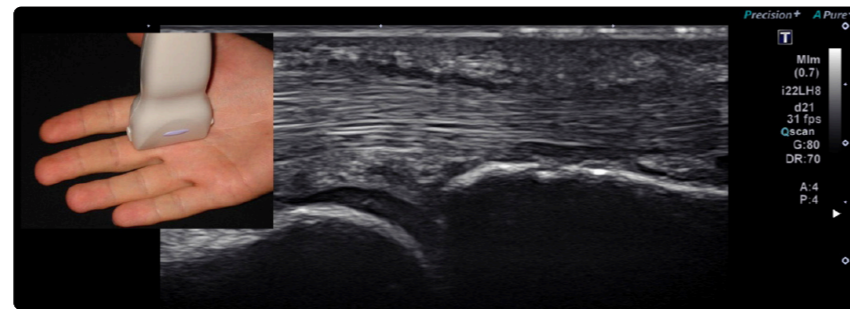
- **Ultra-High Resolution Imaging.** Delivers improved visualization of detail with 2X the resolution of today's CT.
- **AI Powered CT.** Creates sharp, clear, and distinct images for confident diagnosis.
- **4D Imaging/Kinematic Joint Studies.** Allows joint movement to be fully assessed through 4D Kinematic studies.



# Advanced Ultrasound

Canon offers a suite of innovative ultrasound systems and unique transducers that help teams provide accurate, fast diagnoses. These systems enhance rehab, prepare players to confidently return to the field and help avoid possible reinjury, including:

- **Ultra-High Frequency Imaging.** Enables visualization of superficial structures and dynamic muscle movements with great detail in real time using ultra-high Frequency Matrix Technology.
- **Combining photographs with imaging.** Gain a clear understanding of both the physical and imaging characteristics.
- **Reference imaging.** Visualize the timeline of an injury through a side-by-side comparison of the previous vs. today's exam.



*“Ultrasound imaging done in-house with team physical therapists and medical staff allows timely, objective and dynamic monitoring. Ultrasound findings are immediately integrated with the clinical and functional presentation for aiding in return to play decisions for our athletes, post-injury.”*

— Marilyn Adams, Pt, DPT, San Antonio Spurs, USA

# Advanced Software Solutions

Elite athletes require the most advanced technologies to meet their needs for reaching and maintaining peak performance. Canon Medical's advanced software platforms deliver power and precision across the spectrum of an athlete's needs.

- **Vitre Advanced Visualization Software.** Facilitates improved clinical outcomes with powerful applications, streamlined partner integrations and clinical solutions; creates workflows tailored to each athlete's specific needs.
- **Vitre Global Illumination.** Revolutionary 3D/4D rendering technique helps provide a more photorealistic view of human anatomy that can be shared with clinicians, trainers and athletes and integrated into routine clinical image workflow.
- **Vitre Image Sharing.** Helps automate the process for outside image ingestion, allowing clinicians fast access to outside images within their current workflow.

