

**Canon**



***Infinix<sup>™</sup>-i 4DCT***

See. Diagnose. Treat.

# BETTER PATIENT CARE IN ONE INTERVENTIONAL LAB/CT SOLUTION

Canon Medical Systems' groundbreaking new Infinix™-i 4D CT supports you in bridging the gap between the interventional lab and CT with one seamlessly integrated solution for the ultimate in patient care. Infinix-i 4D CT may help eliminate the need to transfer patients back and forth between different rooms, while enabling clinicians to reduce dose and maintain patient safety. The system may help clinicians save valuable time and gain efficiencies with the ability to plan, treat, and verify in the same room, on a single system.

## Configurations

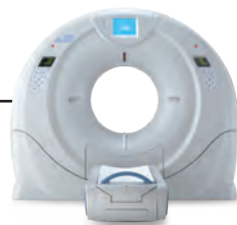
The Infinix-i 4D CT is available with two different CT configurations including Aquilion ONE™ / VISION Edition and Aquilion™ PRIME, to provide the optimum solution for any clinical environment.

**ONE**  
*Aquilion*  
VISION EDITION



- 78 cm bore
- As little as 0.275 s rotation time
- Up to 640 slices\*
- Up to 16 cm coverage in one rotation

**ONE**  
*Aquilion*



- 78 cm bore
- As little as 0.35 s rotation time
- 640 slices
- 16 cm coverage in one rotation

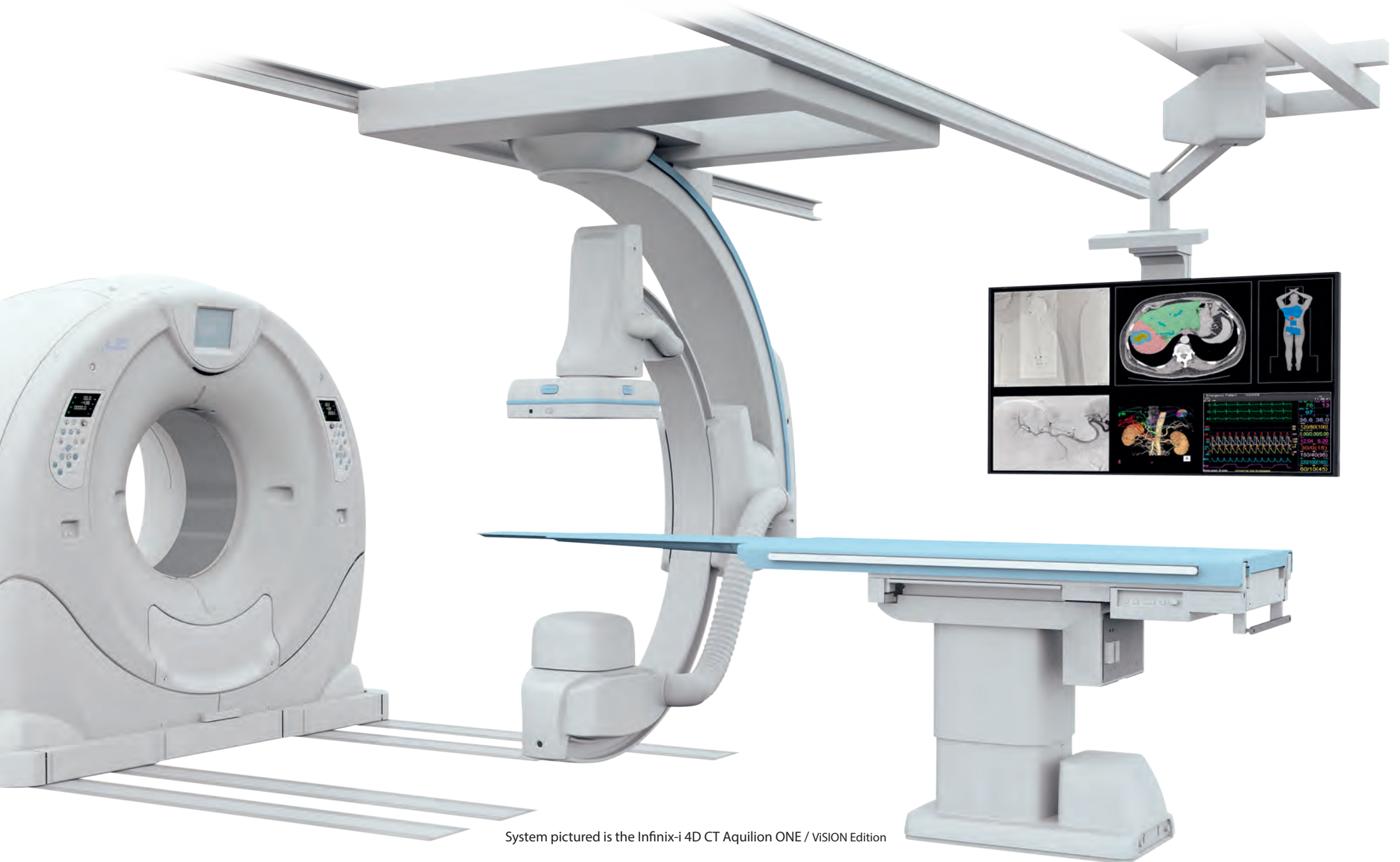
**PRIME**  
*Aquilion*



- 78 cm bore
- 80 slices (upgradeable to 160 slices\*)

\*coneXact™ double slice reconstruction



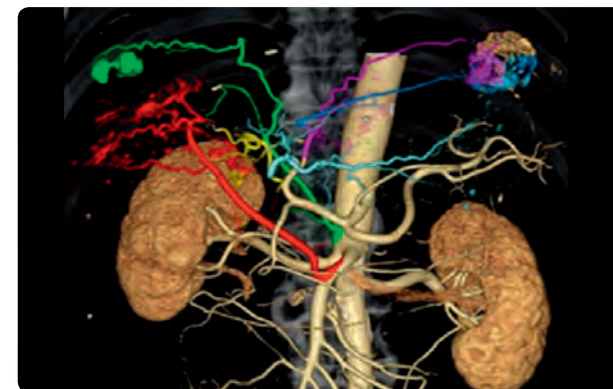
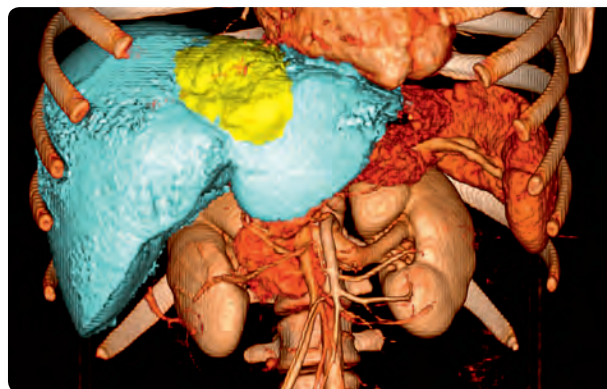
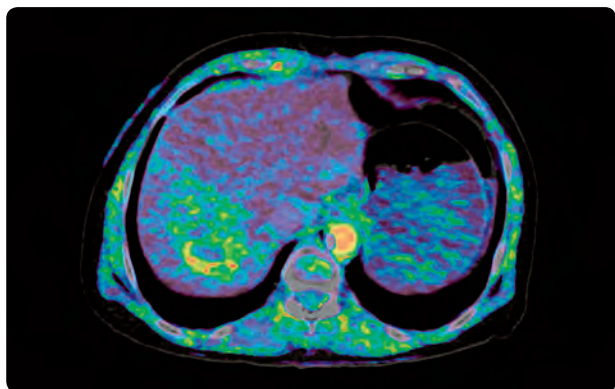


# TRUE CT IMAGING PRIOR, DURING, AND AFTER THE INTERVENTIONAL PROCEDURES

With the Infinix-i 4D CT Aquilion ONE / ViSION Edition, Canon Medical Systems introduces a powerful hybrid imaging system combining Canon Medical Systems' most flexible angio suite with their most advanced dynamic volume CT. Delivering an outstanding solution for image-guided interventions the system enables a wide range of interventional procedures.

## **Imaging Morphology and Function with the Infinix-i 4D CT Aquilion ONE / ViSION Edition**

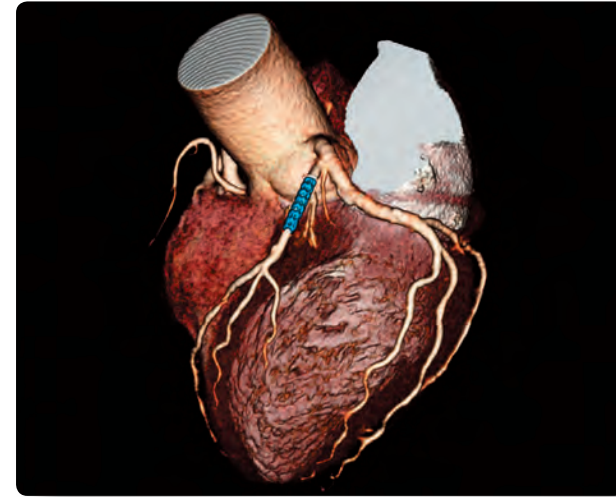
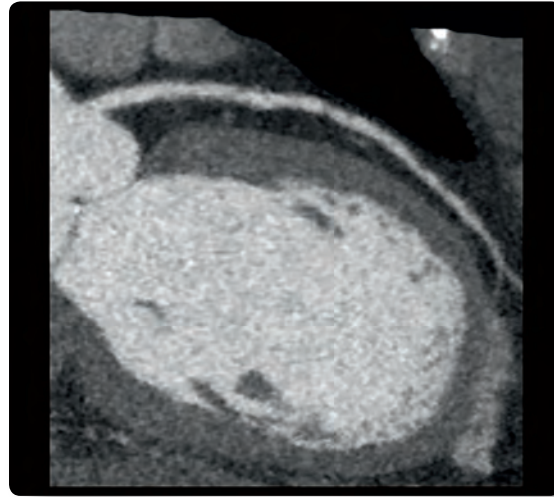
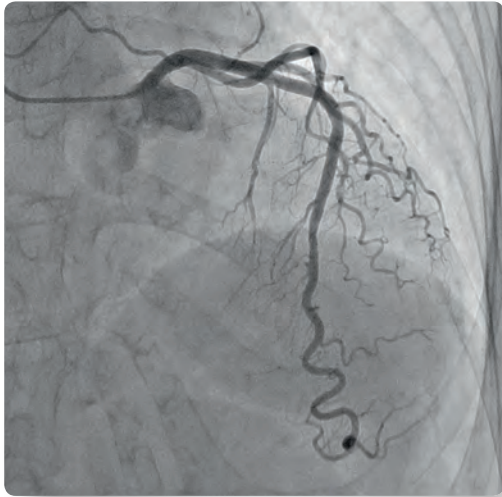
Canon Medical Systems' wide detector CT technology with up to 16 cm coverage in a single rotation allows you to acquire anatomical and functional data simultaneously with high spatial and temporal resolution.



## **Interventional Oncology with the Infinix-i 4D CT Aquilion ONE / ViSION Edition**

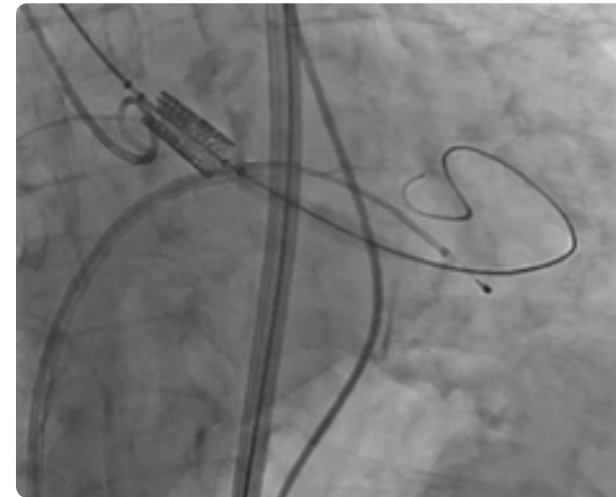
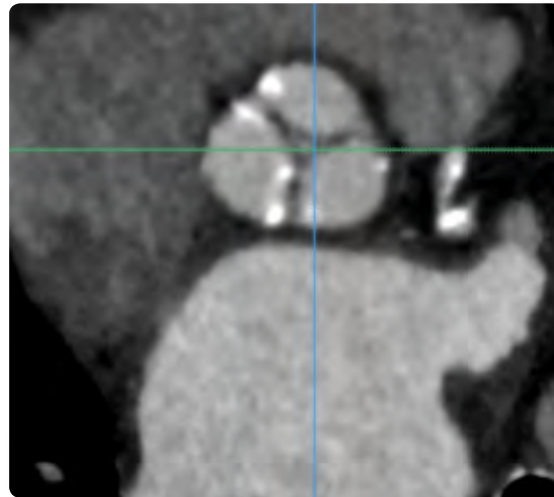
Advanced body perfusion imaging may assist clinicians in imaging and treatment planning of tumors and verifying the response to therapy. The Infinix-i 4D CT Aquilion ONE / ViSION Edition enables clinicians to simplify the positioning of micro-catheters and needles with 4D imaging of tumor vascularization and real-time 3D needle tracking.





#### **Cardiac Intervention with the Infinix-i 4D CT Aquilion ONE / VISION Edition**

The Infinix-i 4D CT Aquilion ONE / VISION Edition enables robust low-dose cardiac CTA. One rotation is all it takes to capture the entire heart in just a split second with the Aquilion ONE / VISION Edition. Reducing motion artifacts, this technology is ideally suited for clinicians planning interventional procedures and for verifying percutaneous stent or valve placements and repairs immediately at tableside.

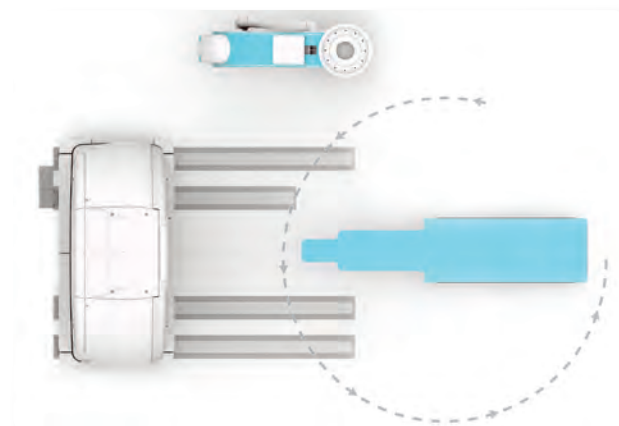


#### **Structural Heart**

Canon Medical Systems' Infinix-i 4D CT PRIME and Aquilion ONE / VISION Edition systems enable clinicians to enhance their structural heart procedures. CT Transcatheter Aortic Valve Replacement (TAVR) planning can aid clinicians with both pre-interventional planning and post-interventional evaluation. True CT imaging prior, during and after interventional procedures on the Infinix-i 4D CT.

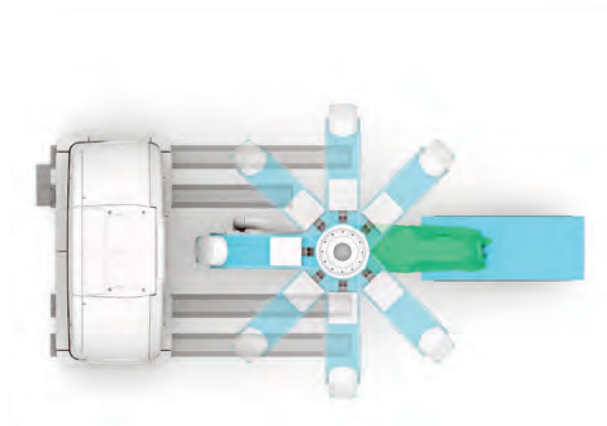
# ONE ROOM. ONE SYSTEM. ONE PROCEDURE.

The Infinix-i 4D CT system combines the interventional lab with a complete CT imaging suite for a streamlined workflow and a smooth patient experience in a single clinical setting. You no longer need to transfer the patients between departments – the Infinix-i 4D CT enables you to plan, treat and verify in a single setting enabling you to prioritize patient care and productivity.



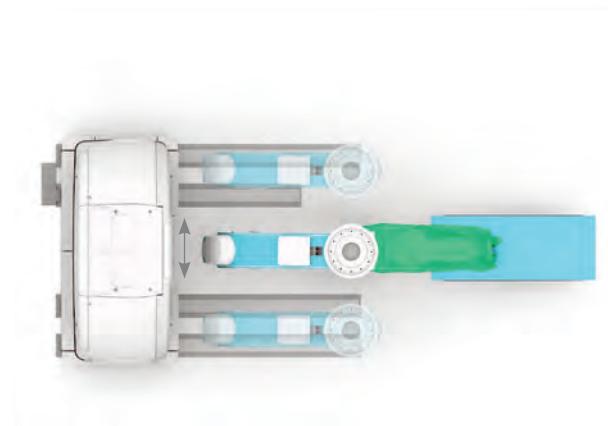
## **Maximum flexibility**

Convenient parking positions for both the C-arm and the CT gantry ensure free access to the table for patient mount and emergency procedures.



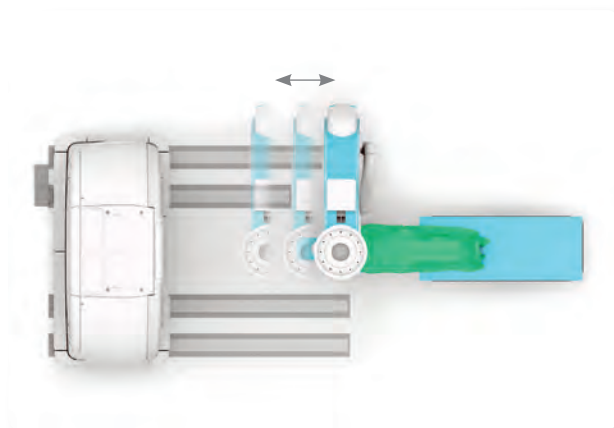
## **270 degrees of freedom**

The Infinix-i 4D CT 270-degree range of C-arm movement enables a smooth workflow even during the most complex interventional procedures.



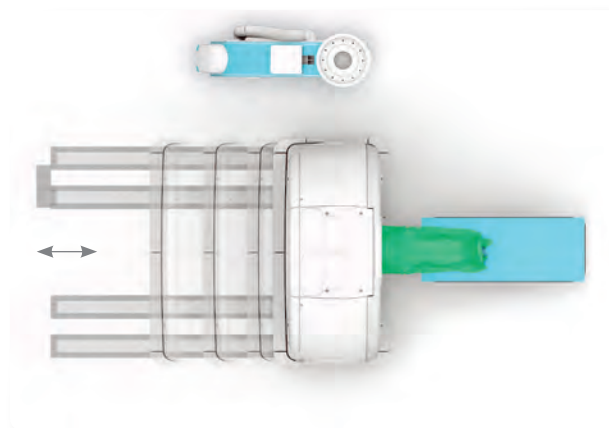
## **Unique lateral coverage**

The dual-track ceiling-mounted C-arm of the Infinix-i 4D CT provides unique fingertip-to-fingertip coverage during transradial procedures.



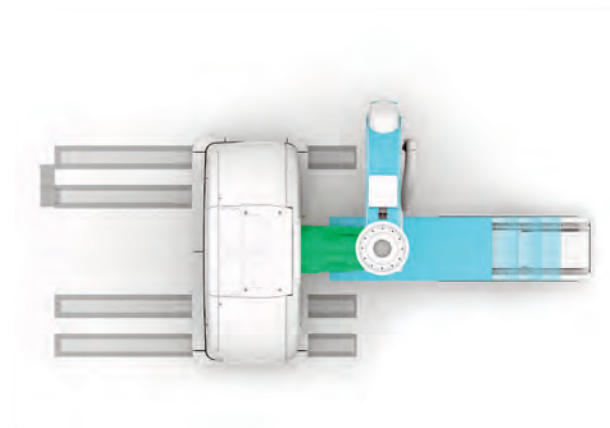
### Smooth workflow

While the CT gantry can be fully removed from the workspace, the ceiling mounted C-arm technology provides fast coverage from head to toe.



### Fine detail imaging

Advanced CT imaging, including a tilting gantry, with the industry's only 0.5 mm detector element supports clinicians in planning, treating, and verifying in the interventional space.



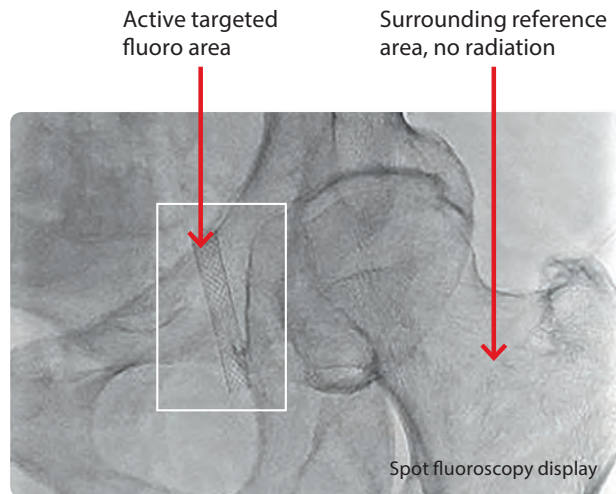
### Seamless integration between modalities

The CT scanner does not have to be parked to its park position, the far end of the rails, for the C-arm to have full functionality. In addition, the CT gantry can perform CT imaging while the C-arm is parked close to the base of the table.



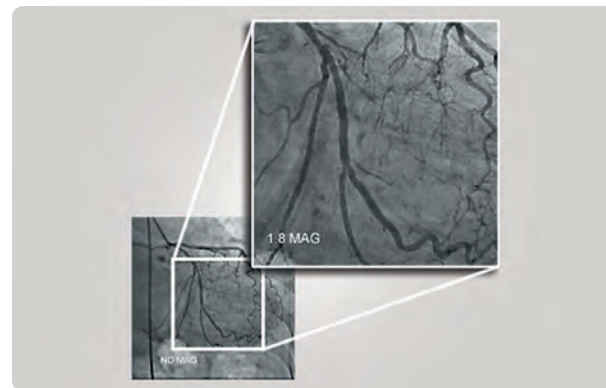
# DOSE MANAGEMENT FOR PATIENTS AND CLINICIANS

Dose management is an important issue for everyone. Canon Medical Systems has optimized every step of the imaging chain to help clinicians reduce dose while enhancing their workflow and image quality. DoseRite™ is Canon Medical Systems' comprehensive dose management solution. Combining advanced detector design with an array of powerful software features, DoseRite provides clinicians with an extensive host of dose-saving and dose management functions.



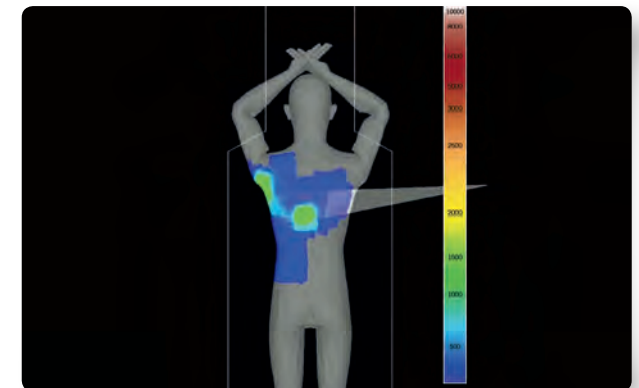
## Spot Fluoro

Spot Fluoro provides asymmetric, lesion-focused collimation while viewing the surrounding area over Last Image Hold (LIH).



## Live Zoom

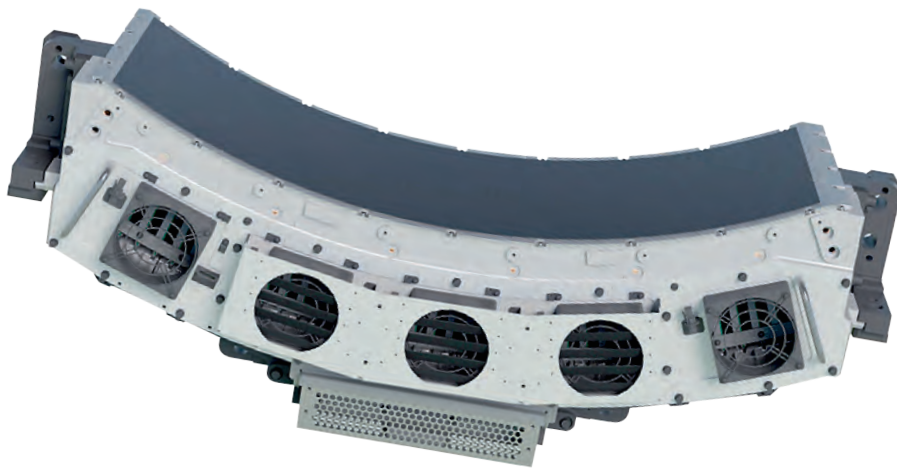
Live Zoom allows magnifying anatomy while performing an intervention without increasing the detector input dose.



## Dose Tracking System

Canon Medical Systems' unique Dose Tracking System provides continuous real-time information on estimated skin dose delivered to the patient.



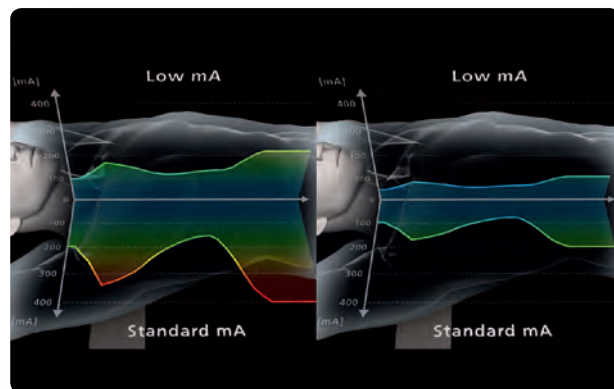


#### PUREVISION Detector

Canon Medical Systems'

PUREVISION detector includes  
40 percent better light output.

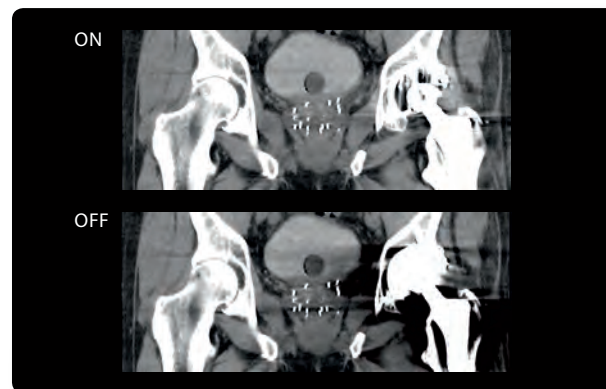
**PUREVISION**



#### AIDR 3D

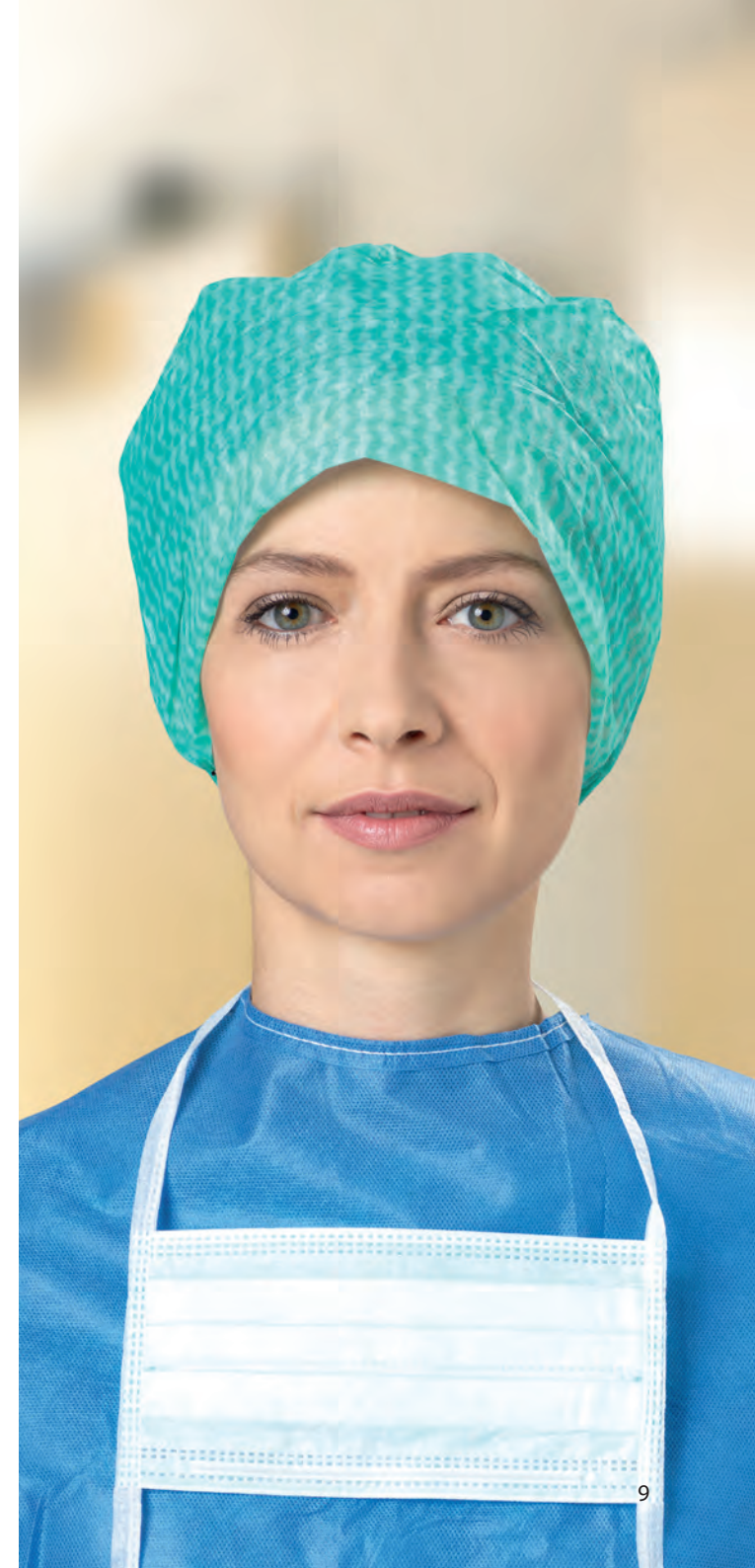
Fully integrated into the Aquilion workflow, Canon Medical Systems' Advanced Iterative Dose Reduction technology (AIDR 3D) helps you achieve optimal image quality with reduced dose on every patient.

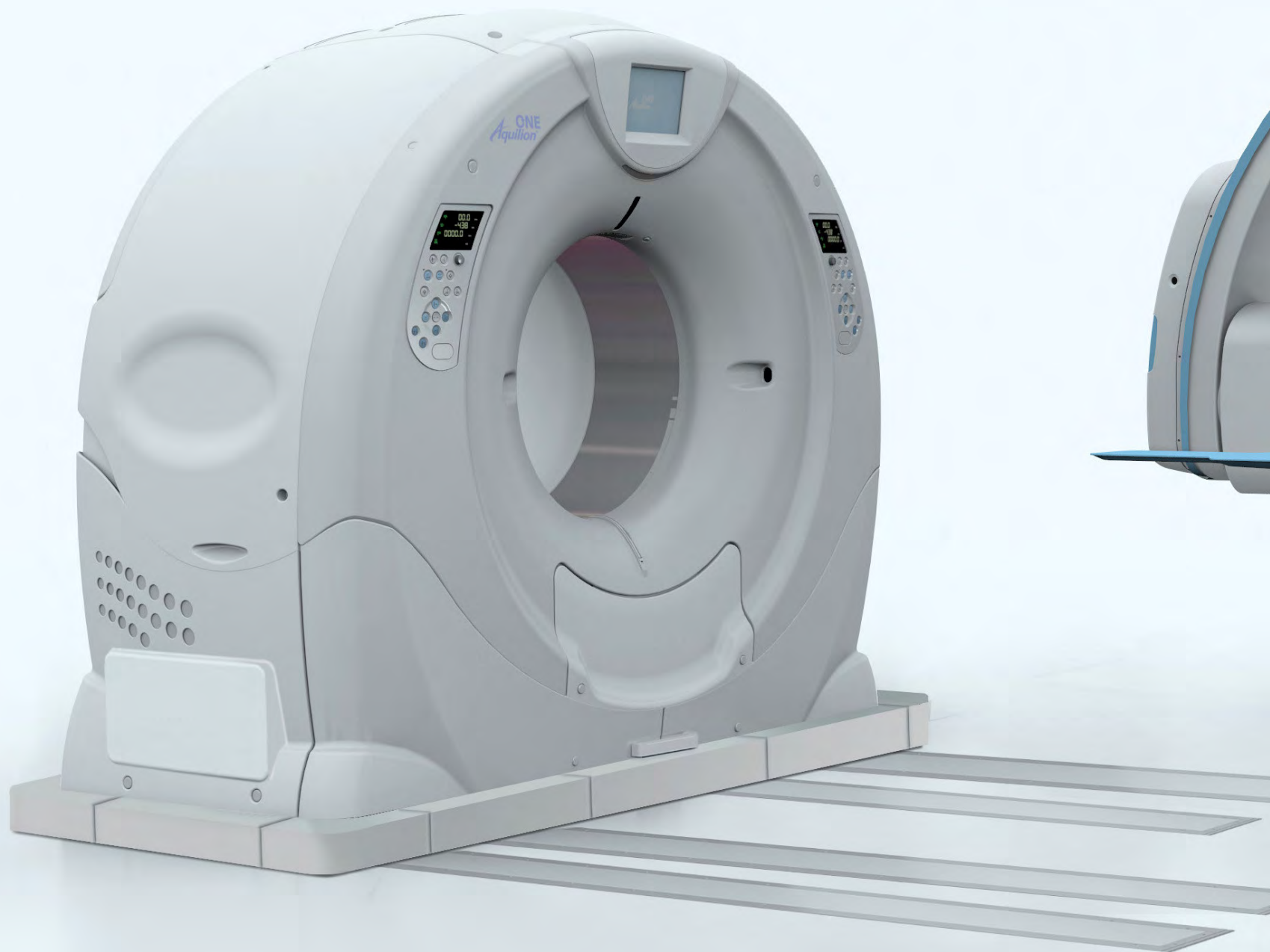
#### Adaptive Diagnostics Clinical Solutions



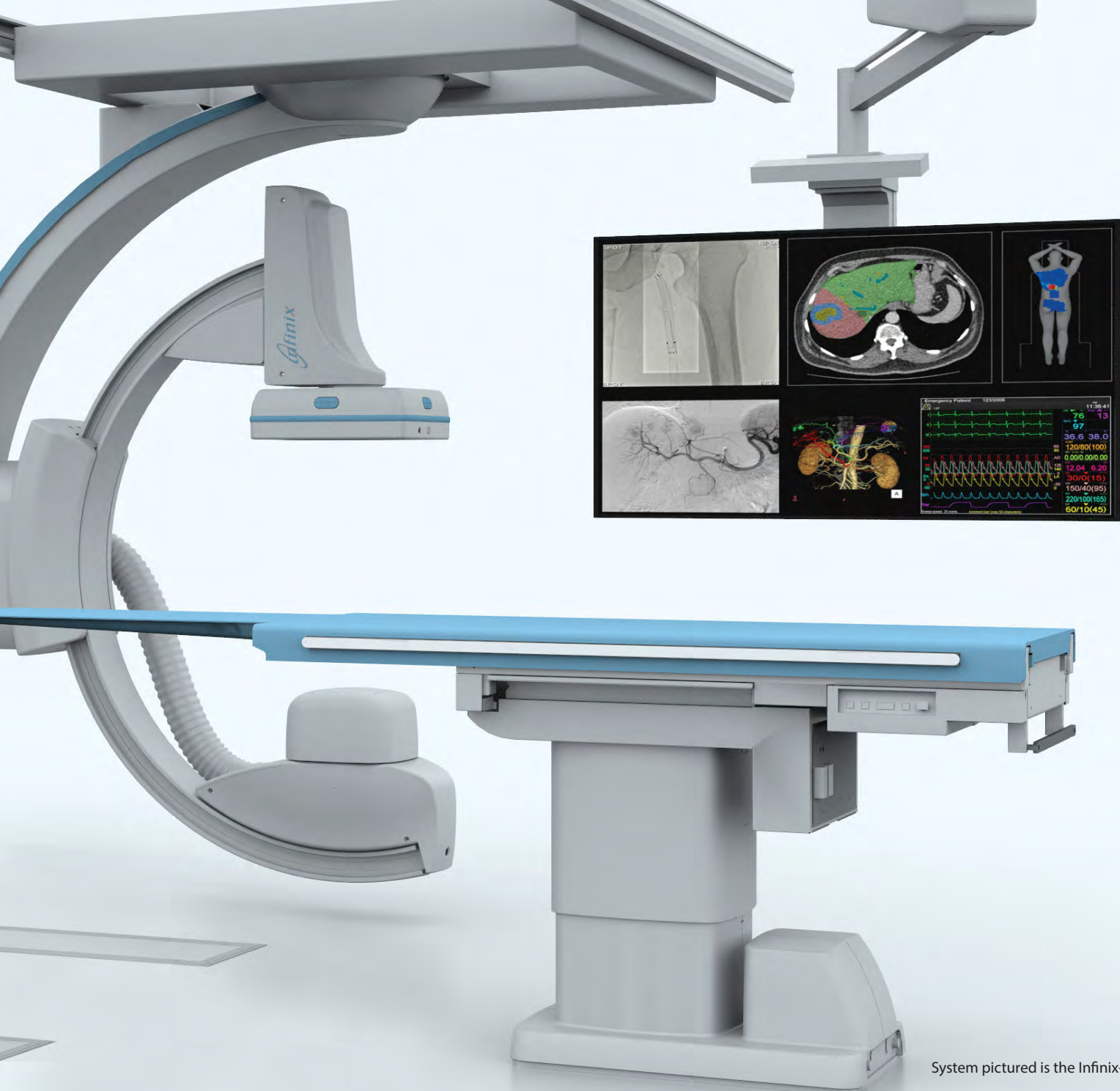
#### Metal Artifact Reduction

Canon Medical Systems' SEMAR™ (Single Energy Metal Artifact Reduction) technology reduces metal artifacts, improving visualization of implants, supporting bone and the adjacent soft tissues for a clearer and more confident diagnosis.









System pictured is the Infinix-i 4D CT Aquilion ONE / VISION Edition

Disclaimer: In clinical practice, the use of the AIDR 3D feature may reduce CT patient dose depending on the clinical task, patient size, anatomical location and clinical practice. A consultation with a radiologist and a physicist should be made to determine the appropriate dose to obtain diagnostic image quality for the particular clinical task. Due to local regulatory processes, this product may not be available in each country. Please contact your local Canon Medical Systems sales representative for the most current information.

Follow us: <https://us.medical.canon>



@CanonMedicalUS



+CanonMedicalUS



Canon Medical Systems USA, Inc.



+CanonMedicalUS

# Canon

CANON MEDICAL SYSTEMS USA, INC.

<https://us.medical.canon>

2441 Michelle Drive, Tustin CA 92780 | 800.421.1968

©Canon Medical Systems, USA 2018. All rights reserved.  
Design and specifications subject to change without notice.

Infinix, Aquilion, Aquilion ONE, Aquilion ONE VISION, Vision Edition, DoseRite, SEMAR, coneXact and Made for Life are trademarks of Canon Medical Systems Corporation. Some features presented in this brochure may not be commercially available on all systems shown or may require the purchase of additional options. Please contact your local Canon Medical Systems representative for details. Google+ logo and YouTube logo are trademarks of Google Inc. TWITTER, TWEET, RETWEET and the Twitter logo are trademarks of Twitter, Inc. or its affiliates. LinkedIn, the LinkedIn logo, the IN logo and InMail are registered trademarks or trademarks of LinkedIn Corporation and its affiliates in the United States and/or other countries.

VLBR12829US MCAXR0293EBA

*Made For life*