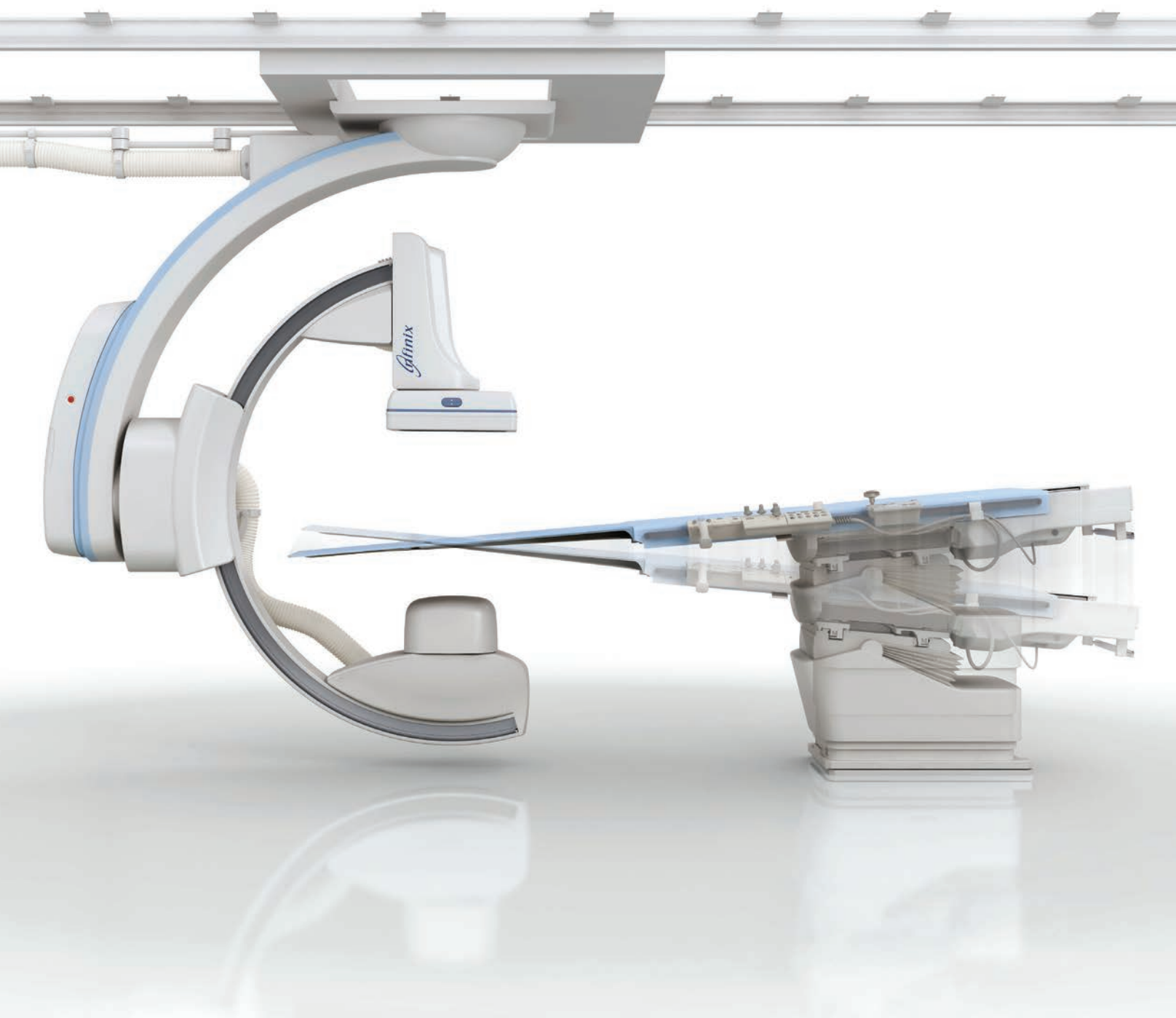


**Canon**

# *Infinix-i*<sup>TM</sup>

Single Plane Ceiling and Floor

**Pediatric Radiology**

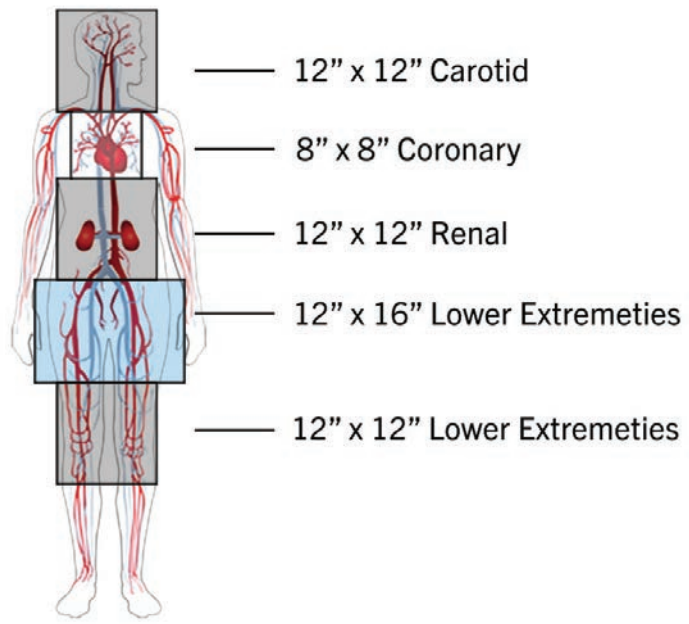


## FLEXIBLE DESIGN

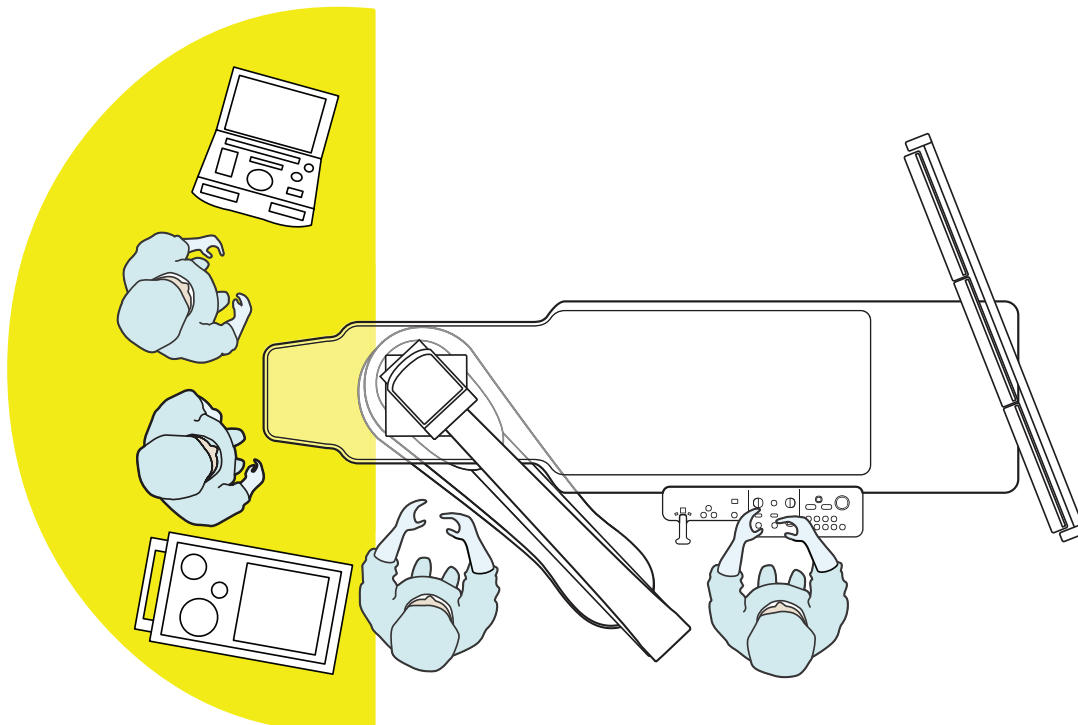
Exclusive **WorkRite** technology gives clinicians more flexibility and integration, allowing them to perform a wider range of procedures safely, comfortably and effectively.

**Access Halo.** Ensure unobstructed head-end workspace to improve patient access for staff and ancillary equipment.

**Flat Panel Detector (FPD).** Choose either 8" x 8" or 12" x 12" detectors on either C-arm for high-quality imaging.



# Create more ease and comfort for kids.



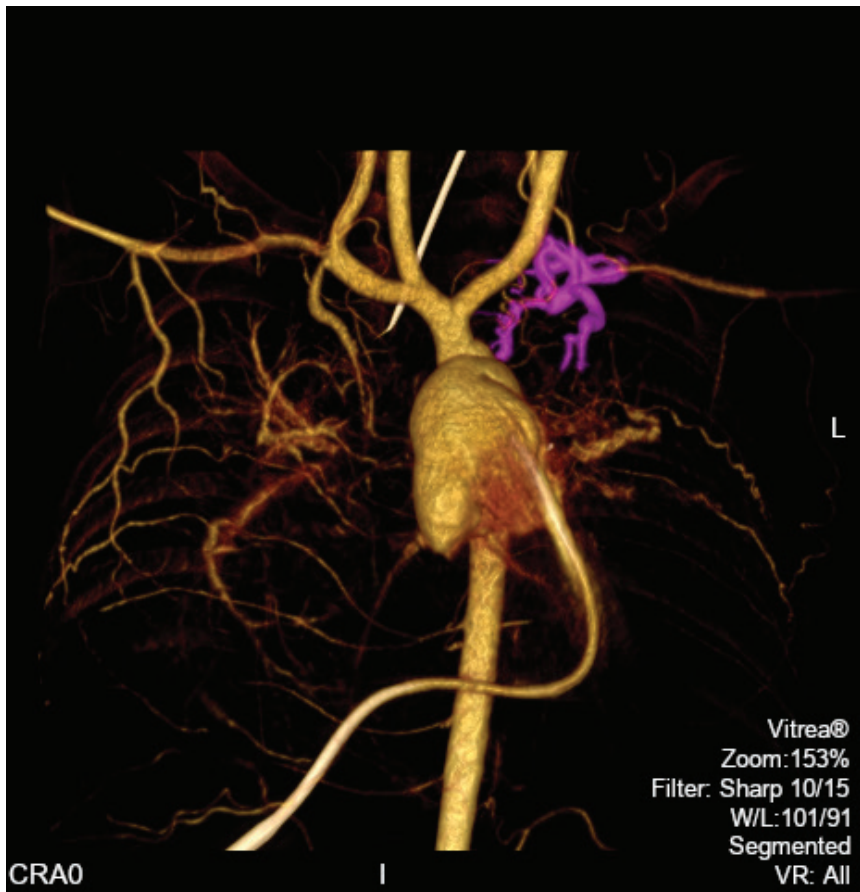
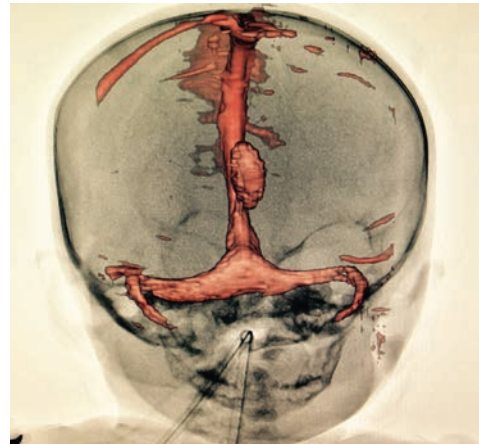
## HIGH QUALITY IMAGING

Powerful imaging capabilities enable clinicians to maintain image quality while minimizing patient X-ray exposure. Along with its standard 2D Roadmap, 3D imaging provides additional views of vascular anatomy to aid clinicians during interventional procedures. Choose from an array of **ImagingRite** options designed with the smallest patients in mind.

**2D Roadmap.** Create a roadmap from an injection or previous acquisition to assist with guidance of catheters and devices during fluoroscopy.

**3D Rotation.** Generate a 3D reconstruction with 3D rotational DA and DSA imaging to show vascular structure.

**3D Roadmap.** Enable a reconstructed 3D image to be superimposed on the fluoroscopic image, allowing guidewire manipulation or catheterization to be performed while observing the course of the vessels.



**Optimum image quality  
at reduced dose.**

# Dose management designed with the smallest patients in mind.

## INDUSTRY-LEADING DOSE MANAGEMENT

Protecting children is our top priority. Using an extensive array of DoseRite™ features, Infinix-i systems help clinicians lower dose. Dedicated to the principles of ALARA (As Low As Reasonably Achievable), Infinix-i's sophisticated software enables clinicians to customize exams to each child's diagnostic needs and size.

### Spot Fluoroscopy

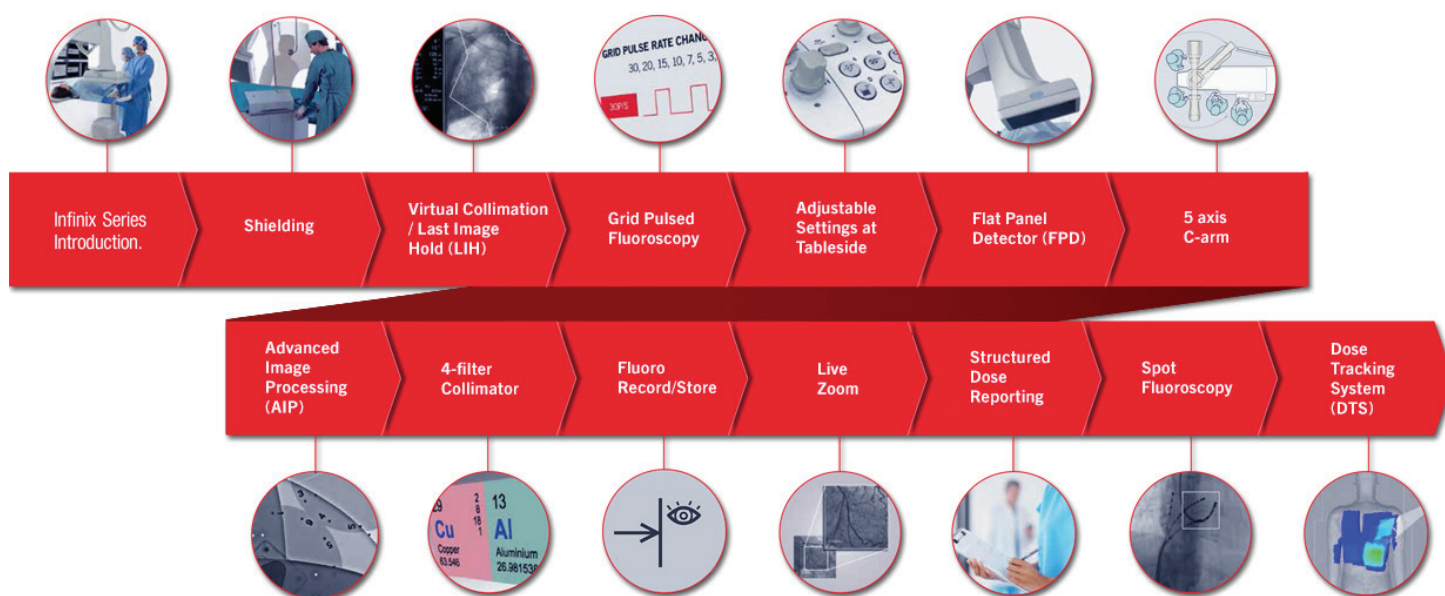
See a more complete picture, see live fluoroscopy inside the target ROI while viewing the surrounding area over Last Image Hold (LIH), without the need to expose the entire field of view.

### Dose Tracking System (DTS)

Estimate dose delivered to the skin in real time and display it on a color-coded map during procedures to continuously monitor exposure and make adjustments.

### Weight specific protocols and settings

Customize protocols based on patient weight instead of age enable clinicians in obtaining the images they need at the dose they want.



# Unprecedented Flexibility and Integration.

Many children with chronic conditions need repeated procedures over time, which often means repeated radiation exposure. Infinix™-i Core+, Infinix-i Sky, and Infinix-i Sky+ pediatric radiology systems directly meet this challenge with industry-leading dose management protocols, customizable settings based on weight, and imaging tools that enable clinicians to deliver high-quality images on the first attempt. Whether you choose a ceiling or floor mounted design, Infinix-i enables clinicians to perform diagnostic imaging at lowered doses to give young patients the care and safety they deserve.



Follow us: <https://us.medical.canon>



@CanonMedicalUS



+CanonMedicalUS



Canon Medical Systems USA, Inc.



+CanonMedicalUS

**Canon**

CANON MEDICAL SYSTEMS USA, INC.

<https://us.medical.canon>

2441 Michelle Drive, Tustin CA 92780 | 800.421.1968

©Canon Medical Systems, USA 2018. All rights reserved.  
Design and specifications subject to change without notice.

Infinix and DoseRite are trademarks of Canon Medical Systems Corporation. Vitrea is trademark of Vital Imaging Inc. Google+ logo and YouTube logo are trademarks of Google Inc. TWITTER, TWEET, RETWEET and the Twitter logo are trademarks of Twitter, Inc. or its affiliates. LinkedIn, the LinkedIn logo, the IN logo and InMail are registered trademarks or trademarks of LinkedIn Corporation and its affiliates in the United States and/or other countries. \*The Infinix-i Single Plane Ceiling and Floor is the INFX-8000C, INFX-8000V and INFX-8000F.

VLBR12837US MCAXR0286EBA

*Made For life*