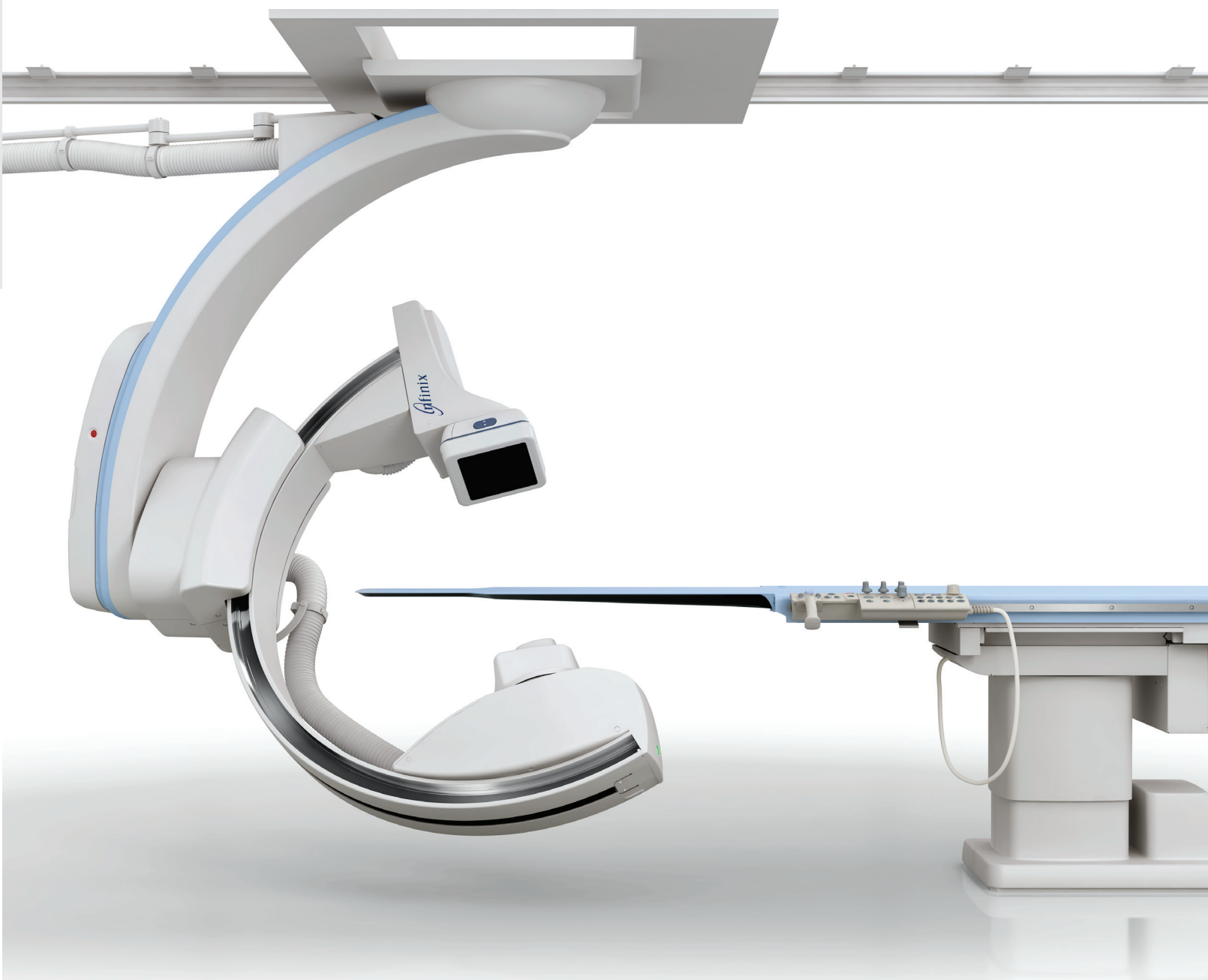


Canon

Infinix-i[™]

Angiography Systems

Interventional Cardiology

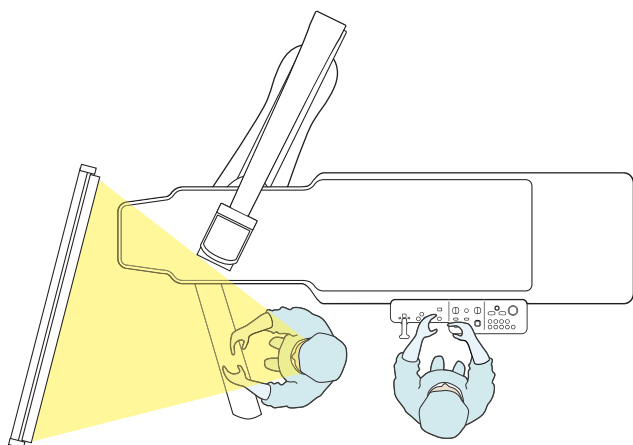
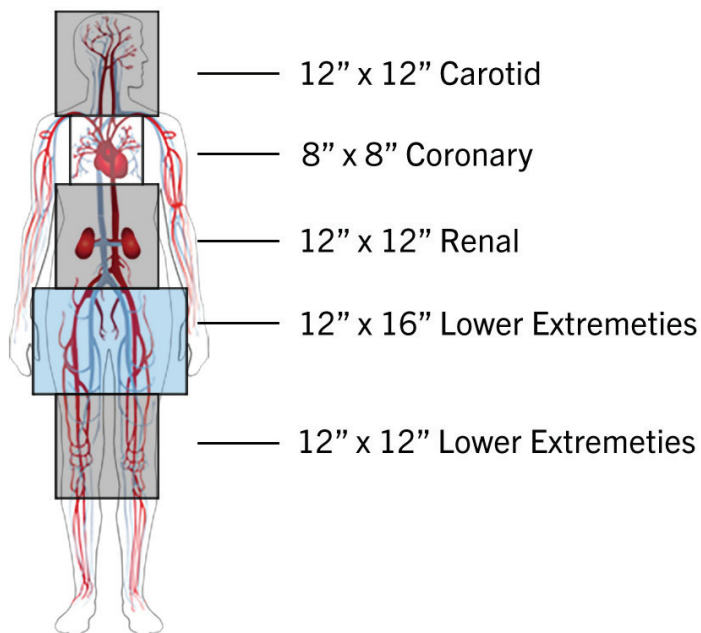


Exclusive **WorkRite** technology gives clinicians more flexibility and integration, allowing them to perform a wider range of procedures safely, comfortably and effectively.

FLEXIBILITY TO MOVE FREELY

Flexible systems allow for a variety of procedures without compromise. Choose the system configuration that is best for you. Pick flat panel detector (FPD) size depending on your coverage needs. And you have a choice of ceiling or floor mount to design the ideal configuration for your environment:

- Ceiling mount includes unique features such as a 270-degree gantry pivot, lateral travel and full-body coverage, and the ability to park out of the way, making it ideally suited for any interventional procedure.
- Floor mount includes unique features comprising a 270-degree gantry pivot and head-to-toe and fingertip-to-fingertip coverage, allowing clinicians to move the C-arm, while preserving patient comfort and safety. Free the ceiling up to place the monitor heads up, anywhere!



UNPRECEDENTED ACCESS

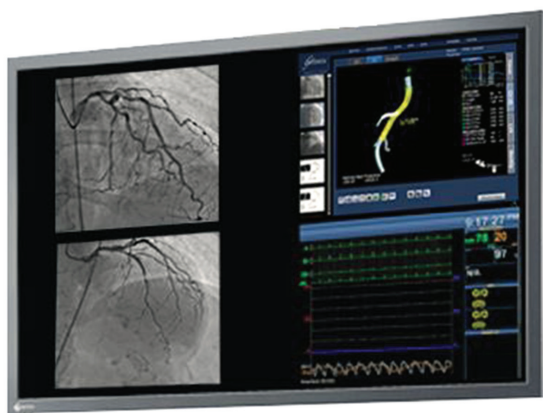
Infinix-i systems lead the industry in creating direct patient access.

- Access Halo enables unobstructed head-end work space to improve patient access for staff and ancillary equipment.
- Slim line controls make it easier for cardiovascular operators to comfortably assist clinicians tableside

INTEGRATED CONNECTIVITY

Successful interventions require rapid response, focused concentration, and accurate data. Infinix-i systems deliver an integrated workflow with responsive systems that communicate in real time.

- Diagnostic Planning with Vitrea™ advanced visualization allows for seamless integration with 3D software to better visualize and analyze complex anatomy
- Optimized control room workflow with 30" Interventional Dashboard enables up to eight system inputs into a single workspot
- A 58" monitor allows for video integration and up to 27 inputs to manage and arrange images in the exam room
- Agnostic interoperability across the Integrated Healthcare Enterprise (IHE) for fluidity in connectivity to reporting tools

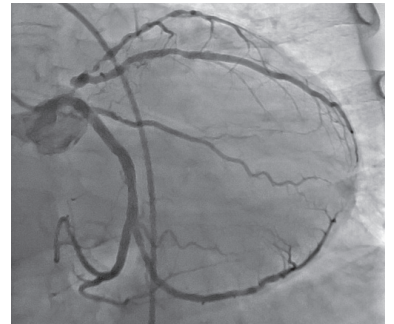


OPTIMAL IMAGE QUALITY

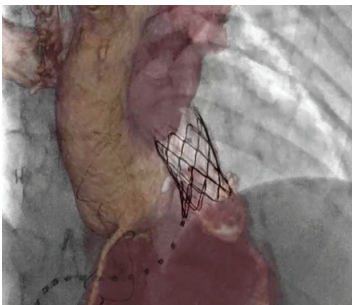
With **ImagingRite** technology, Canon Medical Systems offers an advanced imaging platform that supports a wide range of procedures, from standard PCIs to advanced structural heart disease — and even peripheral procedures outside the heart.

PERCUTANEOUS CORONARY INTERVENTION (PCI)

- **2D Coronary Rotation.** Perform a single injection and let the C-arm rotate to capture key diagnostic views.
- **Quantitative Coronary Analysis (QCA).** Assesses coronary arterial dimensions and assists clinicians in the selection of the optimal balloon and stent size.



“ I need the right tools ”
for the right intervention.

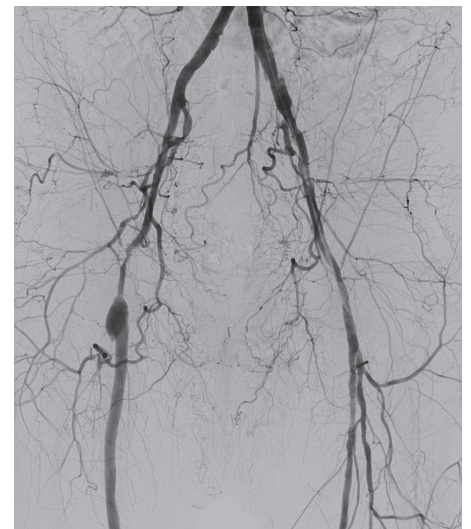


STRUCTURAL HEART DISEASE

- **TAVR Software.** Determine access pathway, valve size and key anatomical measurements before you enter the interventional lab.
- **3D Multi-Modality Fusion Roadmap.** Use CT or MR datasets in the interventional lab and register with live X-ray.

PERIPHERAL VASCULAR DISEASE

- **Dynamic Trace.** Perform contrast runoffs anywhere in the body.
- **Parametric Imaging (PI) with CCC*.** Characterize the contrast media dynamics, no matter where in the body.
- **Quantitative Vascular Analysis (QVA).** Fast and intuitive analysis of peripheral vessels.
- **3D Roadmap.** Automatically register 3D Angio images with live 2D fluoro/DA.



*Parametric Imaging Software is not intended for stand-alone use or diagnosis.

High Quality Images at the Lowest Possible Dose.

COMPREHENSIVE DOSE MANAGEMENT TOOLS

Canon Medical Systems' **DoseRite** technology offers industry-leading dose management tools designed to assist clinicians in minimizing patient X-ray dose while maintaining optimum image quality.

3D Advanced Image Processing

A combination of clinical dedicated algorithms and state of the art hardware provides optimized imaging protocols for any clinical application. The same technology is used for both 2D and 3D imaging.

Spot Fluoroscopy

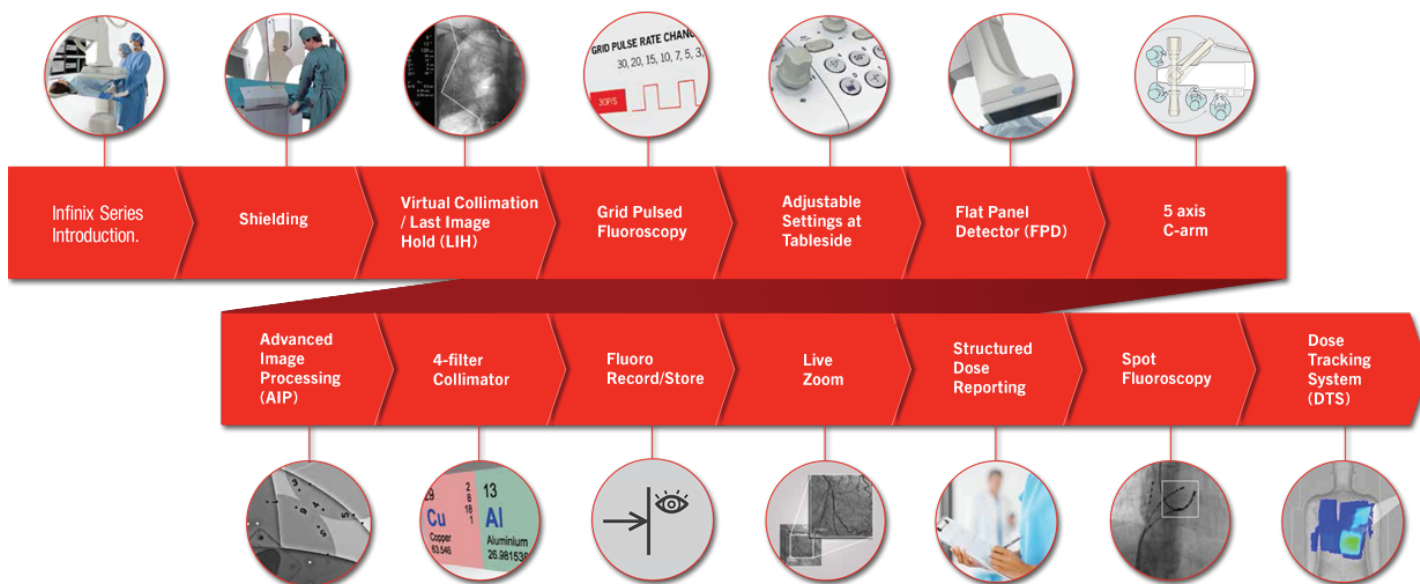
Next generation collimation allows for assymetric collimation while expanding your view. Display a live spot of fluoro anywhere in frame without losing your reference of LIH.

Dose Tracking System (DTS)

Canon Medical Systems' award-winning and exclusive DTS technology estimates dose delivered to the skin in real time and displays it on a color-coded map during procedures so clinicians can continuously monitor exposure and make adjustments.

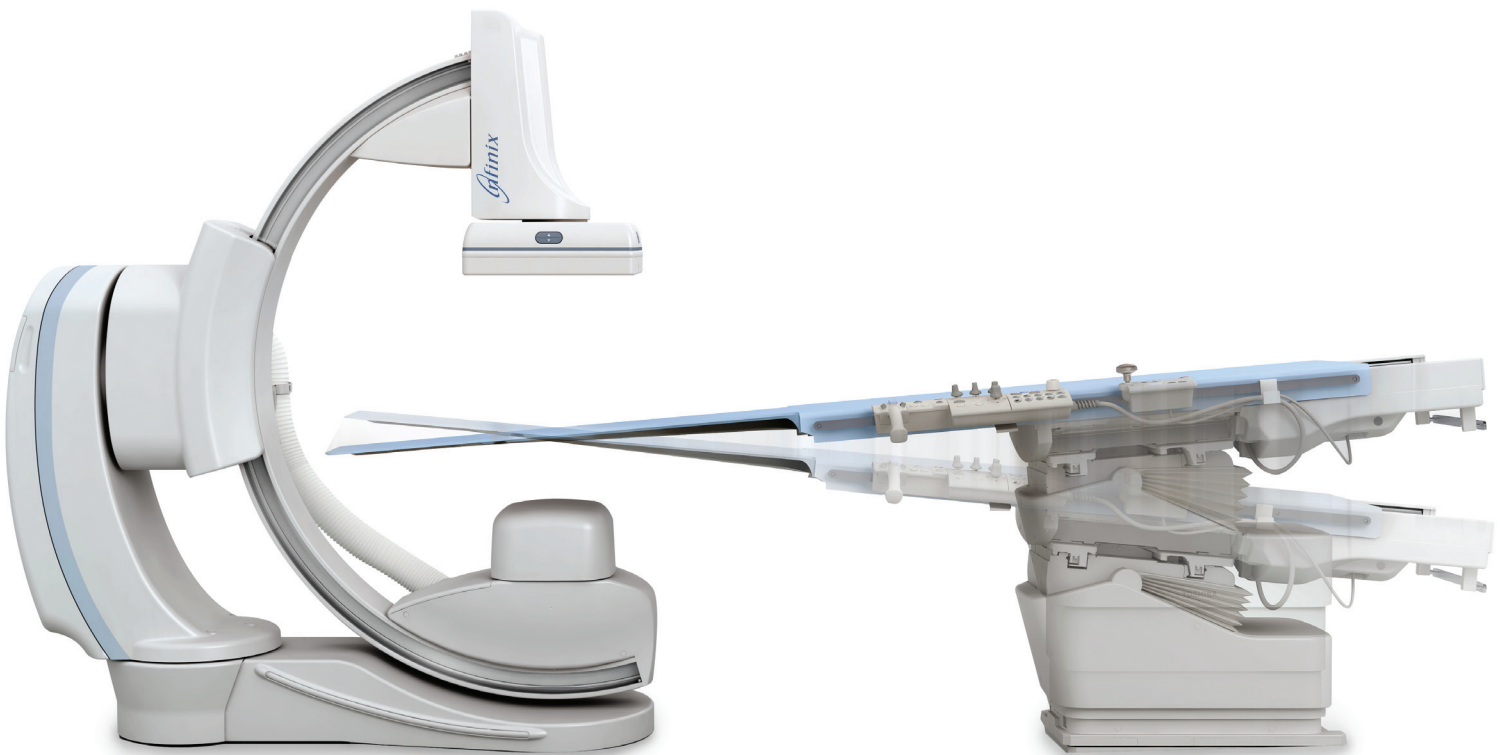
Live Zoom

Increases image display size in real time during both fluoroscopy and DA, offering potential dose savings compared to traditional field of view (FOV) magnifications.



Unprecedented Flexibility and Integration.

Today's interventions require speed, flexibility and high performance. Canon Medical Systems' single-plane interventional systems offer just that—and much more. Infinix-i™ combines industry-leading image quality and dose management capabilities with a revolutionary C-arm that enables you to provide better patient access to enable a wider range of procedures. These fully customizable solutions offer the choice between a floor or ceiling mount, three different detector sizes, and advanced imaging applications to fit your unique clinical needs. Based on the pillars of **WorkRite**, **ImagingRite**, and **DoseRite™**, Infinix-i delivers efficiency with a flexible design.



A streamlined workflow and patient experience.

Better. Smarter. Healthier.

Infinix-i provides unmatched flexibility for interventional cardiology. With Infinix-i, Canon Medical Systems leads the quest for better health care:

1 Better Care
A flexible system enables clinicians to provide their patients with the most effective and efficient care.

2 Smarter Spending
Lower costs through workflow improvements with a C-arm designed to help clinicians drive efficiency and decrease their procedure time.

3 Healthier People
Automated and user-selectable dose management tools are designed to help clinicians minimize dose while maximizing safety.

Follow us: <https://us.medical.canon>



@CanonMedicalUS



+CanonMedicalUS



Canon Medical Systems USA, Inc.



+CanonMedicalUS

Canon

CANON MEDICAL SYSTEMS USA, INC.

<https://us.medical.canon>

2441 Michelle Drive, Tustin CA 92780 | 800.421.1968

©Canon Medical Systems, USA 2018. All rights reserved.
Design and specifications subject to change without notice.

Infinix, DoseRite and Made for Life are trademarks of Canon Medical Systems Corporation. Vitrea is trademark of Vital Imaging Inc. Google+ logo and YouTube logo are trademarks of Google Inc. TWITTER, TWEET, RETWEET and the Twitter logo are trademarks of Twitter, Inc. or its affiliates. LinkedIn, the LinkedIn logo, the IN logo and InMail are registered trademarks or trademarks of LinkedIn Corporation and its affiliates in the United States and/or other countries.

VLBR12843US MOIGE0029EBA

Made For life