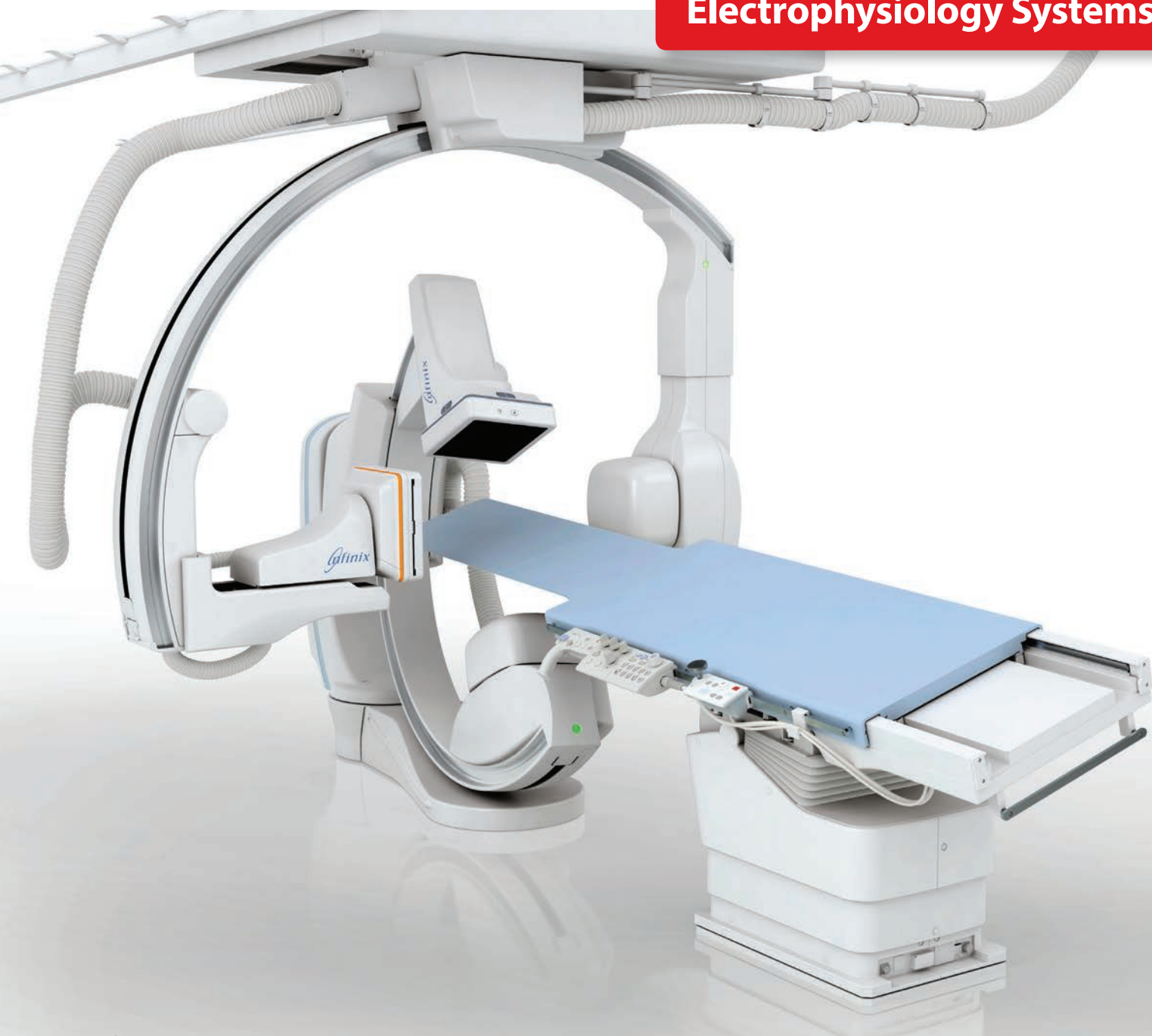


Canon

Infinix-i[™]

Biplane, Single Plane

Electrophysiology Systems



*Pictured system is INFX-8000V (BP)

State-of-the-art **WorkRite** technology creates an efficient workflow and provides optimum patient access while allowing the clinicians to maintain proper body mechanics during challenging interventions.

Infinix-i Core+, Sky & Sky+

- See multiple views with advanced 3D software
- Access Halo enables unobstructed head-end work space to improve patient access for staff and ancillary equipment.
- Unobstructed head-end work space for better access to the patient and ancillary equipment.

Infinix-i Biplane

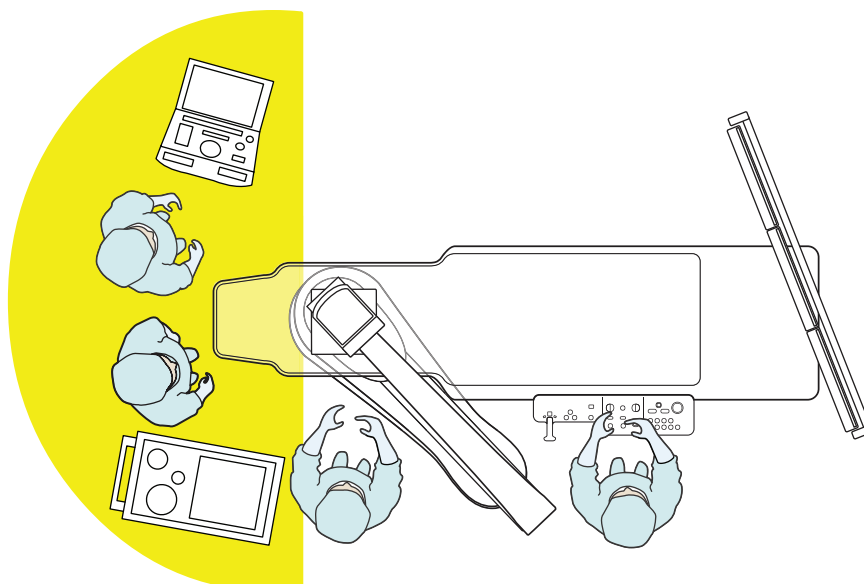
In addition to the Single Plane features, Canon Medical Systems' Biplane systems include:

- Create two labs in one with the ultimate flexible system: operate as a biplane system, or park the lateral arm and use the single plane.
- Achieve frontal and lateral views without constantly having to move the C-arm to keep the patient stable.
- Simplified biplane positioning with variable iso-center.



**Pictured system is INFX-8000V (BP)*

Designed to help you maximize your efficiency and prioritize safety.

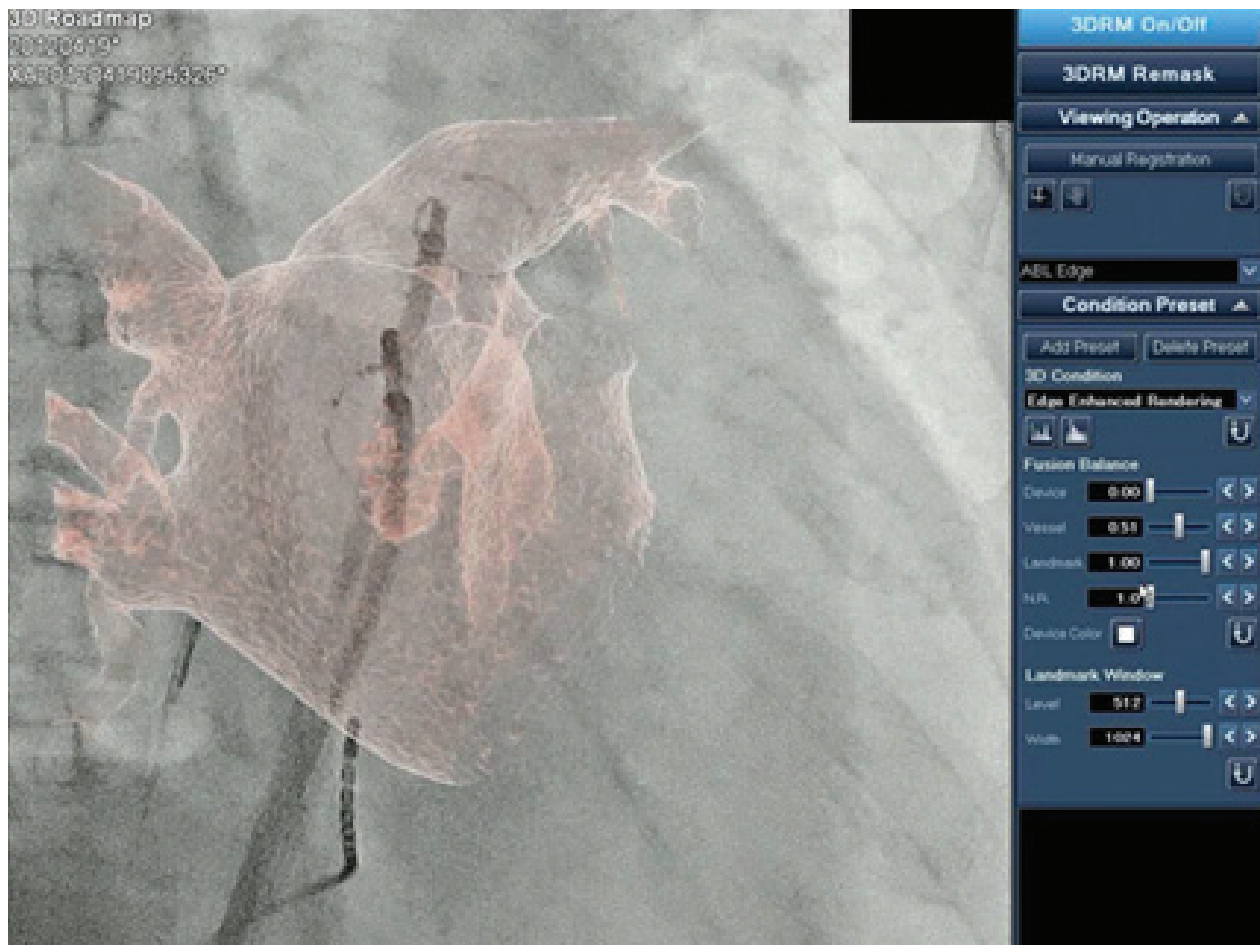


ADVANCED IMAGING

Canon Medical Systems offers a comprehensive suite of imaging technologies to meet your electrophysiology needs. Intuitive design makes it easy to acquire, store and scan images, while high-powered applications aid clinicians in imaging an array of conditions, from arrhythmia to heart failure.

Our optional **ImagingRite** tools include:

- **3D Multi-Modality Fusion.** Bring any CT or MR volume dataset into the interventional lab and register with live X-ray to provide additional views of the vascular anatomy to aid clinicians during interventional procedures.
- **Left Ventricular Analysis.** Supports automatic contour detection of the left ventricle, volume calculation, and wall-motion analysis.



The tools you need for
optimal image quality.

Unique dose management technology.

INNOVATIVE DOSE MANAGEMENT TOOLS

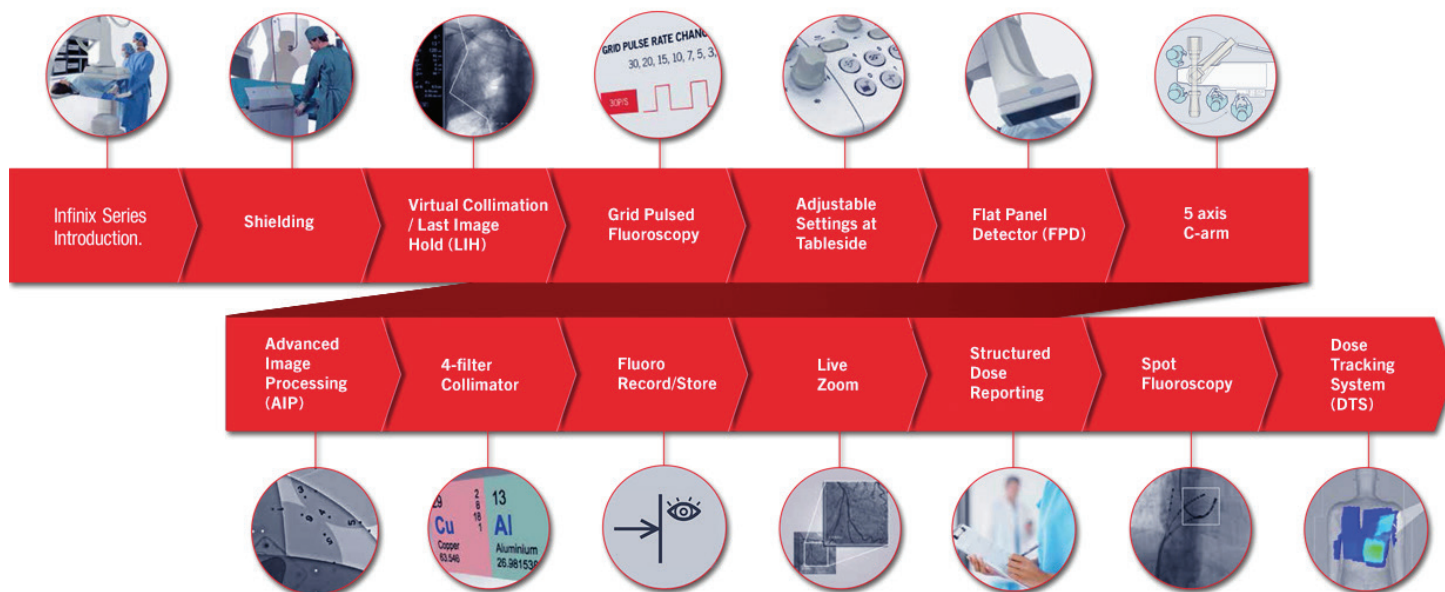
Electrophysiology often means long procedures, which can result in high dose to patients and staff. Our comprehensive dose management tools, **DoseRite™**, include innovative solutions to help clinicians prioritize safety.

Dose Tracking System (DTS)

Canon Medical Systems' award-winning DTS* estimates dose delivered to the skin in real time and displays it on a color-coded map during procedures so physicians can continuously monitor exposure and make adjustments.

Spot Fluoroscopy

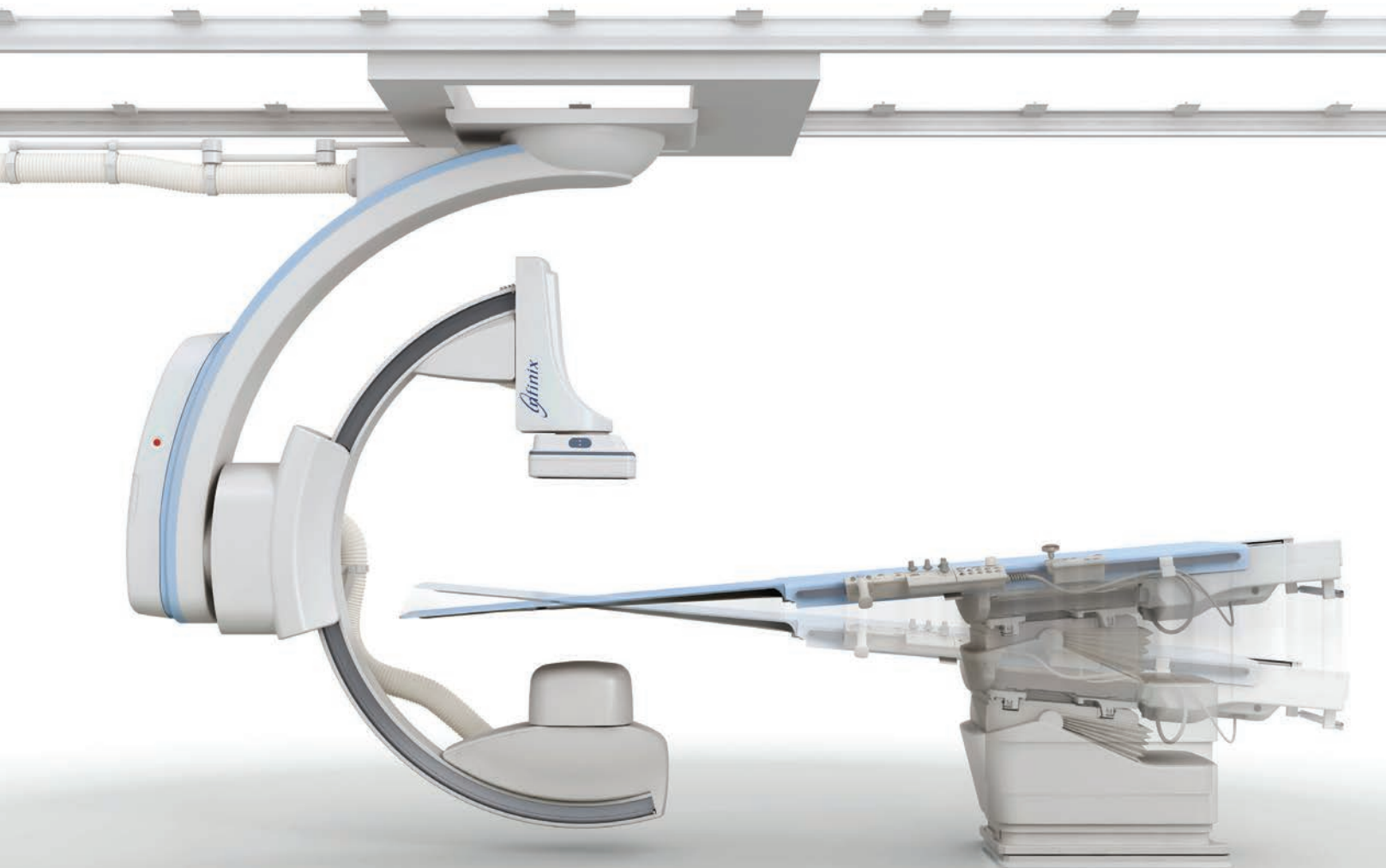
See a more complete picture, see live fluoroscopy inside the target ROI while viewing the surrounding area over Last Image Hold (LIH), without the need to expose the entire field of view.



*Awarded Best New Radiology Software 2014 by AuntMinnie.com

Unprecedented Flexibility and Integration.

See things in a whole new way with Canon Medical Systems' innovative electrophysiology systems. Infinix™-i is packed with industry-leading features, including advanced 3D software and the ability to see multiple views. With a choice of biplane or single plane systems, Canon Medical Systems has a customizable solution to fit your specific budget and clinical needs.



*Pictured system is INFX-8000C

Follow us: <https://us.medical.canon>



@CanonMedicalUS



+CanonMedicalUS



Canon Medical Systems USA, Inc.



+CanonMedicalUS

Canon

CANON MEDICAL SYSTEMS USA, INC.

<https://us.medical.canon>

2441 Michelle Drive, Tustin CA 92780 | 800.421.1968

©Canon Medical Systems, USA 2018. All rights reserved.
Design and specifications subject to change without notice.

Infinix and DoseRite are trademarks of Canon Medical Systems Corporation. Google+ logo and YouTube logo are trademarks of Google Inc. TWITTER, TWEET, RETWEET and the Twitter logo are trademarks of Twitter, Inc. or its affiliates. LinkedIn, the LinkedIn logo, the IN logo and InMail are registered trademarks or trademarks of LinkedIn Corporation and its affiliates in the United States and/or other countries.

*The Infinix-i Biplane is the INFX-8000V.

VLBR12838US MCAXR0331EBA

Made For life