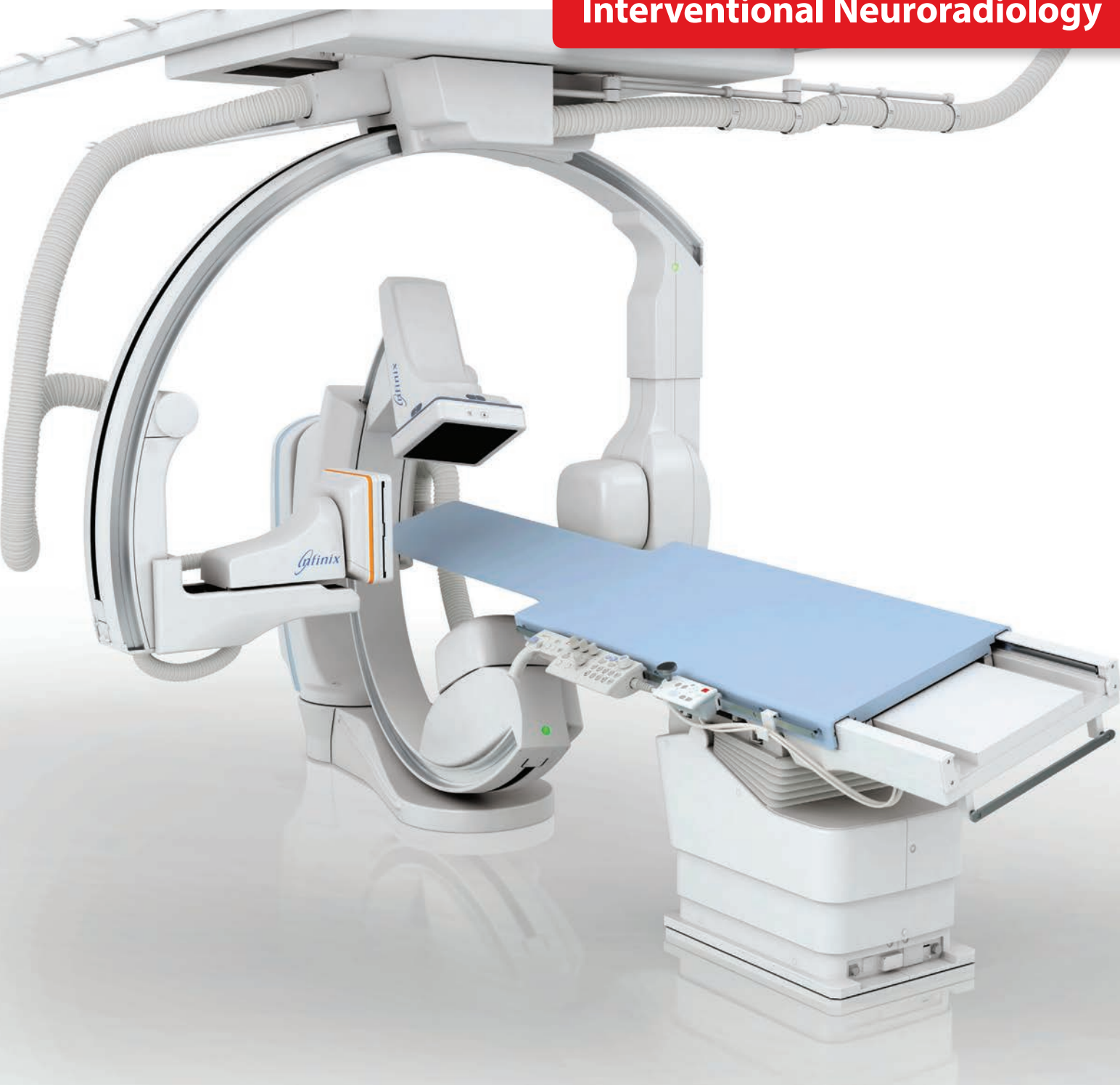


Canon

Infinix™-i Biplane

Interventional Neuroradiology

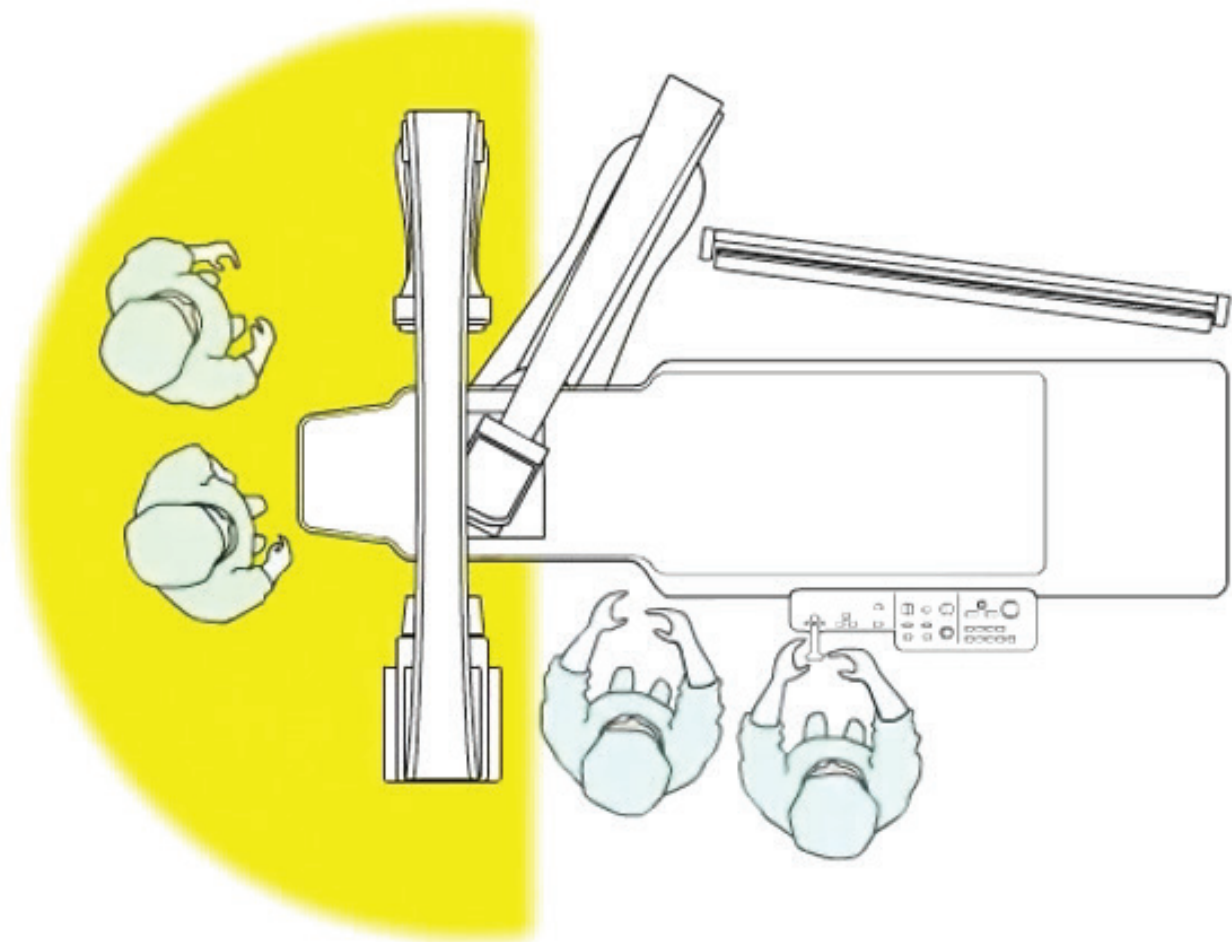


STREAMLINED WORKFLOW

Leading-edge **WorkRite** design delivers unprecedented access. Along with two C-arms that work simultaneously to deliver both an AP and lateral view, Infinix-i's groundbreaking features, including a C-arm flip and Variable Iso-center, can be found exclusively on Canon Medical Systems' systems.

- **C-arm Flip.** Change the location of the radiation source from one side of the patient to the other.
- **Variable Iso-center.** Avoid raising table height or moving patient on the lateral.
- **Access Halo.** Ensure unobstructed head-end work space to improve patient access for staff and ancillary equipment.

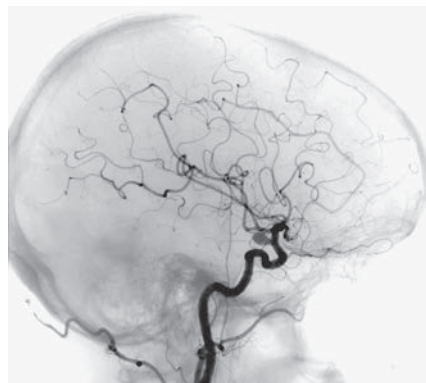
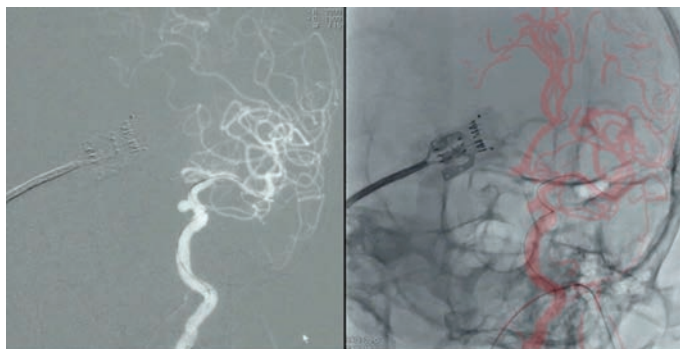
Move the C-arm, not the patient.



HIGH IMAGE QUALITY

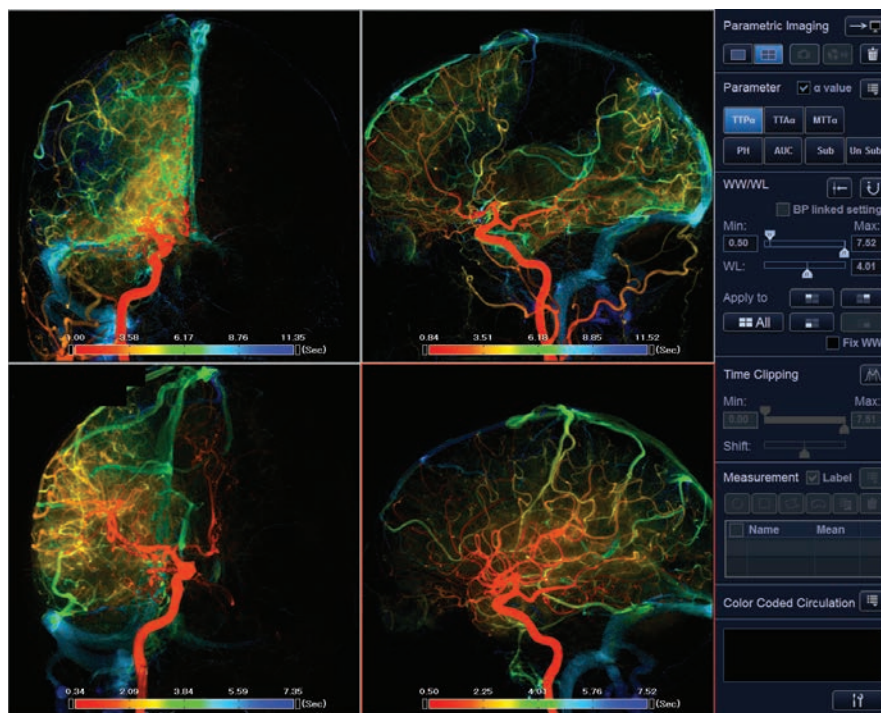
Leading-edge **ImagingRite** technology delivers high-quality images performed quickly. With 2D imaging standard on all systems, and the option of advanced features such as parametric imaging for a colorful visual representation of the brain, Infinix-i offers an exceptional suite of tools to assist clinicians in performing quick and safe procedures with confidence.

- **2D & 3D Roadmap.** Create a roadmap from an injection or previous acquisition to assist with guidance of catheters and devices during fluoroscopy.



- **3D Rotation.** Generate a 3D reconstruction with rotational DA imaging to show vascular structure.

- **Parametric Imaging (PI) with CCC.*** Display an entire image sequence as a single composite image that is color-coded to show the contrast media dynamics and allow easier visual evaluation.



*Parametric Imaging Software is not intended for stand-alone use or diagnosis.

All of the tools you need for high-quality images every time.

Optimum image quality at reduced dose.

COMPREHENSIVE DOSE MANAGEMENT TOOLS

Canon Medical Systems' **DoseRite™** technology offers industry-leading dose management tools designed to assist clinicians in minimizing patient X-ray dose while maintaining image quality.

3D Advanced Image Processing

A combination of clinical dedicated algorithms and state-of-the-art hardware that provides optimized imaging protocols for any clinical application.

Spot Fluoroscopy

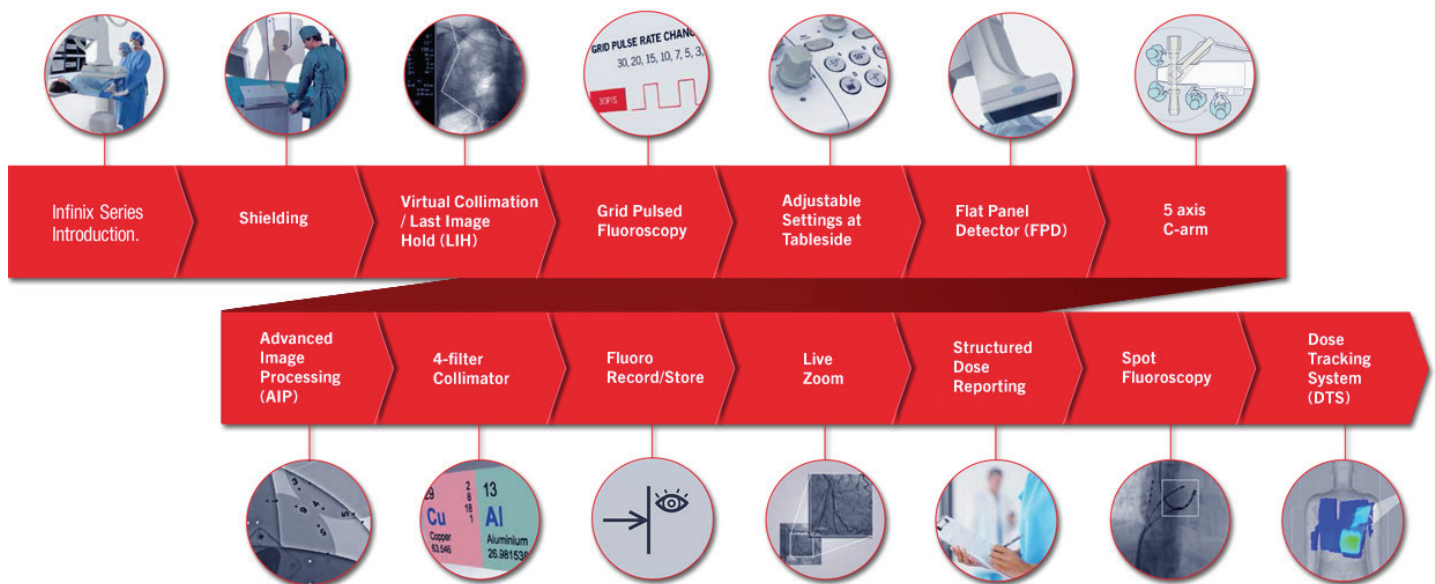
Allow for asymmetric collimation while expanding your view and display a live spot of fluoro anywhere in frame without losing your reference of LIH with this next-generation collimation.

Dose Tracking System (DTS)

Estimate dose delivered to the skin in real time and display it on a color-coded map during procedures so clinicians can continuously monitor exposure and make adjustments with Canon Medical Systems' award-winning and exclusive DTS technology.*

Live Zoom

Increase image display size in real time during both fluoroscopy and DA, offering potential dose savings compared to traditional field of view (FOV) magnifications.



*Awarded Best New Radiology Software 2014 by AuntMinnie.com

“ I need more data in less time.”

The wait is over. The Infinix-i Biplane system features advanced C-arm technology that analyzes multiple views and angles, with the unique option of a C-arm flip to change the direction of the radiation source. With comprehensive dose management tools and suite of advanced imaging features, our industry-leading biplane systems enable clinicians to handle increasing demand without compromising on quality.



Follow us: <https://us.medical.canon>



@CanonMedicalUS



+CanonMedicalUS



Canon Medical Systems USA, Inc.



+CanonMedicalUS

Canon

CANON MEDICAL SYSTEMS USA, INC.

<https://us.medical.canon>

2441 Michelle Drive, Tustin CA 92780 | 800.421.1968

©Canon Medical Systems, USA 2018. All rights reserved.
Design and specifications subject to change without notice.

Infinix and DoseRite are trademarks of Canon Medical Systems Corporation. Vitrea is trademark of Vital Imaging Inc. Google+ logo and YouTube logo are trademarks of Google Inc. TWITTER, TWEET, RETWEET and the Twitter logo are trademarks of Twitter, Inc. or its affiliates. LinkedIn, the LinkedIn logo, the IN logo and InMail are registered trademarks or trademarks of LinkedIn Corporation and its affiliates in the United States and/or other countries. *The Infinix-i Biplane is the INFX-8000V.

VLBR12841US MCAXR0289EBA

Made For life