

**TOSHIBA  
MEDICAL**

*Infinix*<sup>™</sup>  
**4DCT**

**ONE VISION**



**SEAMLESS INTEGRATION OF CT AND ANGIOGRAPHY:  
PLAN, TREAT, VERIFY IN ONE SETTING.**

Discover a more efficient alternative to cone-beam CT with Toshiba's Infinix<sup>™</sup>-i 4DCT, which seamlessly integrates the interventional lab and CT for a paradigm shift in interventional workflow.

# A Streamlined Workflow and Patient Experience

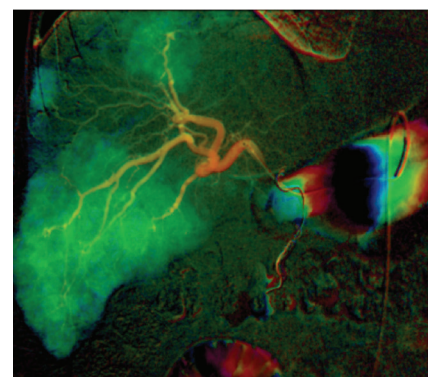
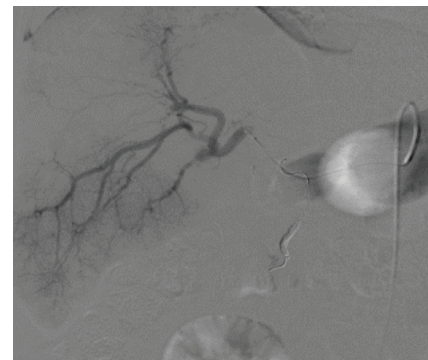
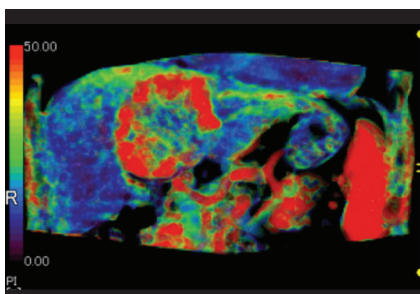
Infinix-i <sup>4D</sup>CT ONE VISION is the only combined angio-CT system that offers up to 16cm of CT coverage in one fast rotation\*.

True CT instead of "CT-Like" imaging offers:

- Improved IQ due to reduced motion artifacts
- Whole Organ Body Perfusion and Volumetric CT Fluoroscopy
- Larger axial FOV
- Improved Low Contrast Detectability

CT images can assist in better visualization, improved device manipulation, and verification of results. As a result, efficiency may be increased.<sup>1,2,3</sup>

Patient transfer between CT and interventional suites is eliminated. As a result the Infinix-i <sup>4D</sup>CT may help clinicians to reduce time-of and time-to procedure.



The combined room may be ideally suited for a variety of interventional radiology procedures, including:

- Transcatheter arterial chemoembolization (TACE)
- Selective internal radiation therapy (SIRT)
- Ablations (RFA, microwave)
- Transcatheter arterial embolization (TAE)

<sup>1</sup> Impact of a Unified CT Angiography System on Outcome of Patients with Hepatocellular Carcinoma, H. Toyoda, et.al., American Journal of Roentgenology, 2009;192:766-774.

<sup>2</sup> Angio CT for miscellaneous cases: complex RFA, drainages, A. Gogna, IR 2013 Angio CT Studies Update

<sup>3</sup> Angio CT for SIRT, T. K. Hiong, IR 2013 Angio CT Studies Update

\*0.275 second rotation time

Follow us: [www.Medical.Toshiba.com](http://www.Medical.Toshiba.com)



@ToshibaMedical



+Toshiba Medical



Toshiba America Medical



Toshiba Medical

**TOSHIBA AMERICA MEDICAL SYSTEMS, INC.** 2441 Michelle Drive, Tustin CA 92780 | 800.421.1968

©Toshiba America Medical Systems 2016. All rights reserved. Design and specifications are subject to change without notice.

Infinix is a trademark of Toshiba Medical Systems Corporation.

VLCSS12571US MCAXR0290EB

*Made For life*