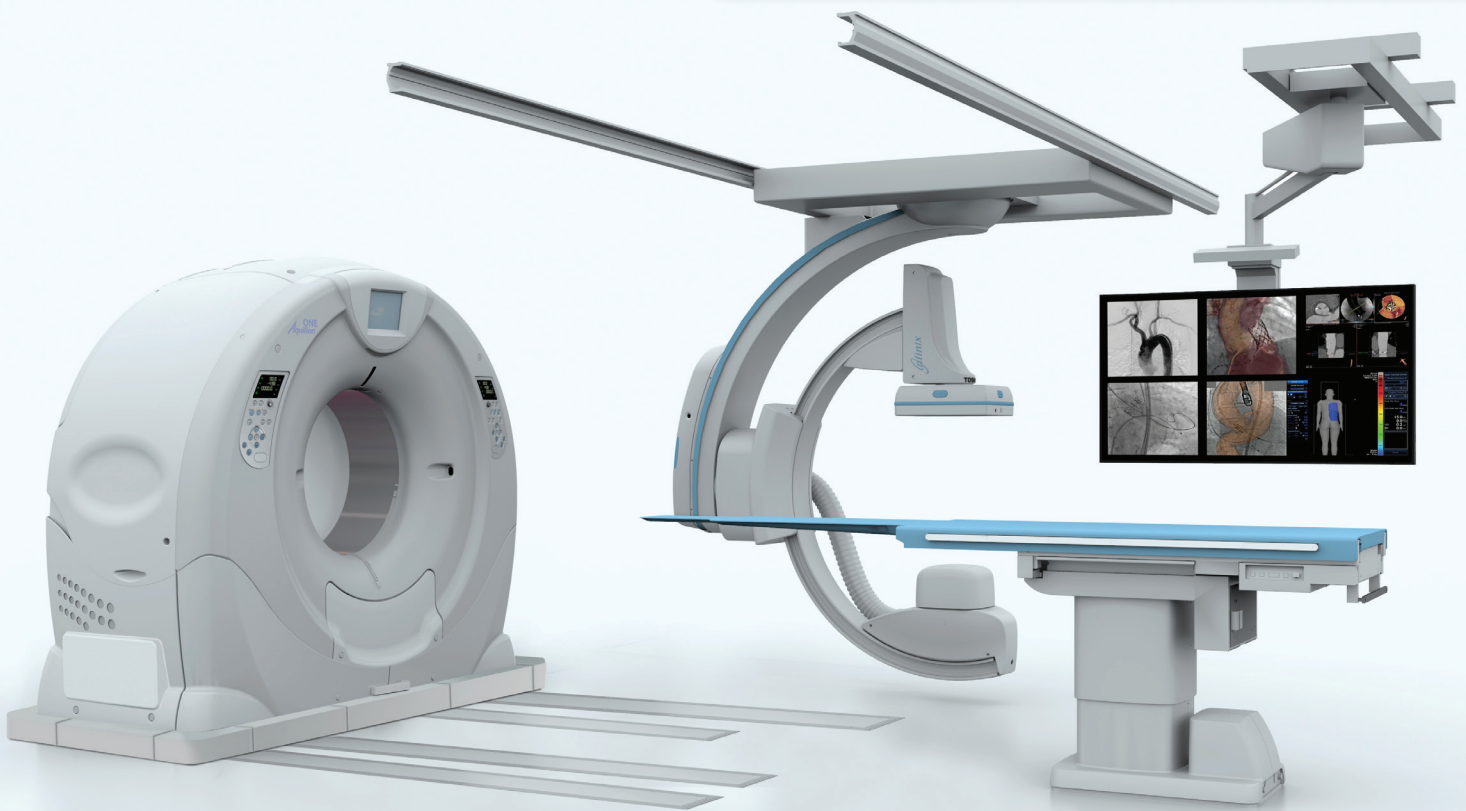




# Infinix-i<sup>TM</sup> 4D CT

**Aquilion ONE<sup>TM</sup> / ViSION Edition**



## **The Cardiovascular Interventional Solution with Access to Actual Real-Time CT Imaging**

When interventional cardiologists need real-time imaging, Canon Medical Systems' Infinix-i 4D CT Aquilion ONE<sup>TM</sup> / ViSION Edition seamlessly integrates the interventional lab and a CT system, providing clinicians with the ability to perform Cardiac CT imaging in the interventional room. With little more than a quarter-second rotation\*, system operators achieve whole-heart CT imaging with up to 640 slices\*\* and 16 cm of coverage per rotation, for temporal resolution and image quality.

Cardiac interventions such as transcatheter aortic valve replacement (TAVR) and chronic total occlusion (CTO) are enhanced by the ability to perform cardiac CT imaging in the interventional room. Cardiac CT imaging can aid clinicians in device visualization during guidance and deployment. Cardiac CT images can also be used in conjunction with Multi-Modality Fusion (MMF) and 3D Roadmapping.

\*0.275 second rotation time

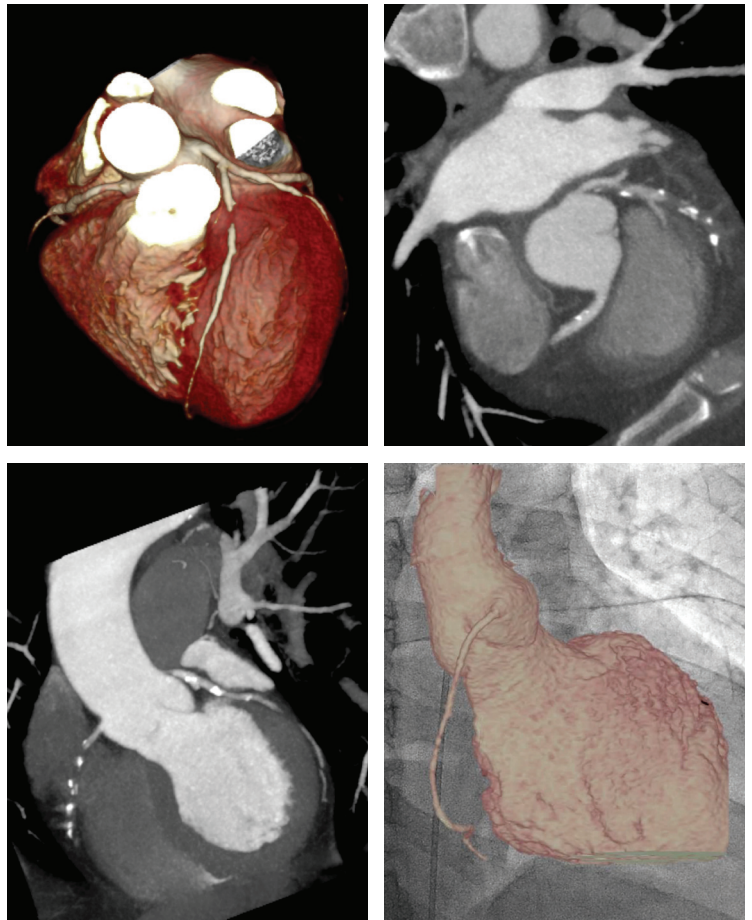
\*\*coneXact<sup>TM</sup> double slice reconstruction

# True CT Imaging Before, During and After Interventional Procedures.

Actual CT imaging in real time provides image quality not possible with CT-like imaging, enabling clinicians to augment their performance of successful interventional procedures.

## RELIABILITY AND PRECISION IN ONE SYSTEM

- Integrated CT imaging provides clinicians with additional views of cardiac and vascular anatomy.
- Integrated CT imaging achieves greater image quality than is possible with CT-like (cone beam CT) imaging, with actual CT imaging from the Infinix-i 4D CT Aquilion ONE / ViSION Edition.
- Real CT imaging available on demand may help clinicians acquire CT images with reduced motion/breathing artifacts, improved soft tissue visualization and device manipulation when compared to cone beam CT images.
- Integrated CT imaging enables 3D CT data to be superimposed on live fluoroscopy using MMF software for additional views of the vascular anatomy.



Follow us: <https://us.medical.canon>



@CanonMedicalUS



+CanonMedicalUS



Canon Medical Systems USA, Inc.



+CanonMedicalUS

# Canon

CANON MEDICAL SYSTEMS USA, INC.

<https://us.medical.canon>

2441 Michelle Drive, Tustin CA 92780 | 800.421.1968

©Canon Medical Systems, USA 2018. All rights reserved. Design and specifications subject to change without notice.

Infinix, Aquilion ONE, Aquilion ONE/ ViSION, ViSION Edition, coneXact and Made for Life are trademarks of Canon Medical Systems Corporation. Google+ logo and YouTube logo are trademarks of Google Inc. TWITTER, TWEET, RETWEET and the Twitter logo are trademarks of Twitter, Inc. or its affiliates. LinkedIn, the LinkedIn logo, the IN logo and InMail are registered trademarks or trademarks of LinkedIn Corporation and its affiliates in the United States and/or other countries.

VLCSS12847US MOIGE0033EBA

*Made For life*